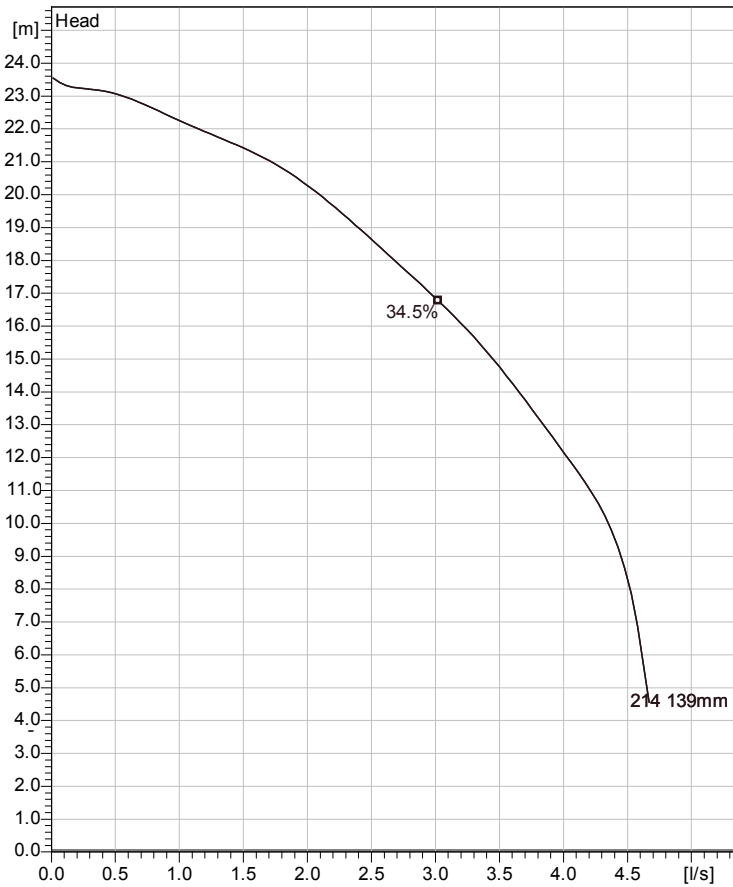


MF 3068 HT 3~ 214

Technical specification



Curve according to: ISO 9906



Note: Picture might not correspond to the current configuration.

General

Semi-open multi-channel impellers with integral grinder cutter in single volute casing for liquids containing solids and fibres.

Impeller

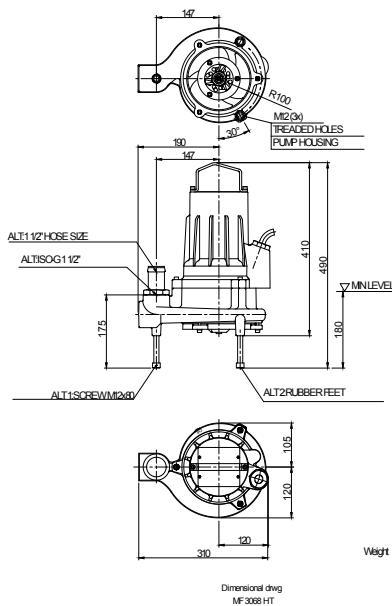
Impeller material	Grey cast iron
Outlet width	40 mm
Inlet diameter	
Impeller diameter	139 mm
Number of blades	10
Throughlet diameter	6 mm

Motor

Motor #	M3068.170 13-08-2BB-W 1,7KW
Stator variant	
Frequency	50 Hz
Rated voltage	190 V
Number of poles	2
Phases	3~
Rated power	1.7 kW
Rated current	8 A
Starting current	36 A
Rated speed	2705 rpm
Power factor	
1/1 Load	0.86
3/4 Load	0.80
1/2 Load	0.68
Efficiency	
1/1 Load	74.5 %
3/4 Load	78.0 %
1/2 Load	78.5 %

Configuration

Installation: F - Free standing Semi permanent, Wet



Project	Project ID	Created by	Created on 2012-10-25	Last update
---------	------------	------------	---------------------------------	-------------

MF 3068 HT 3~ 214

Performance curve

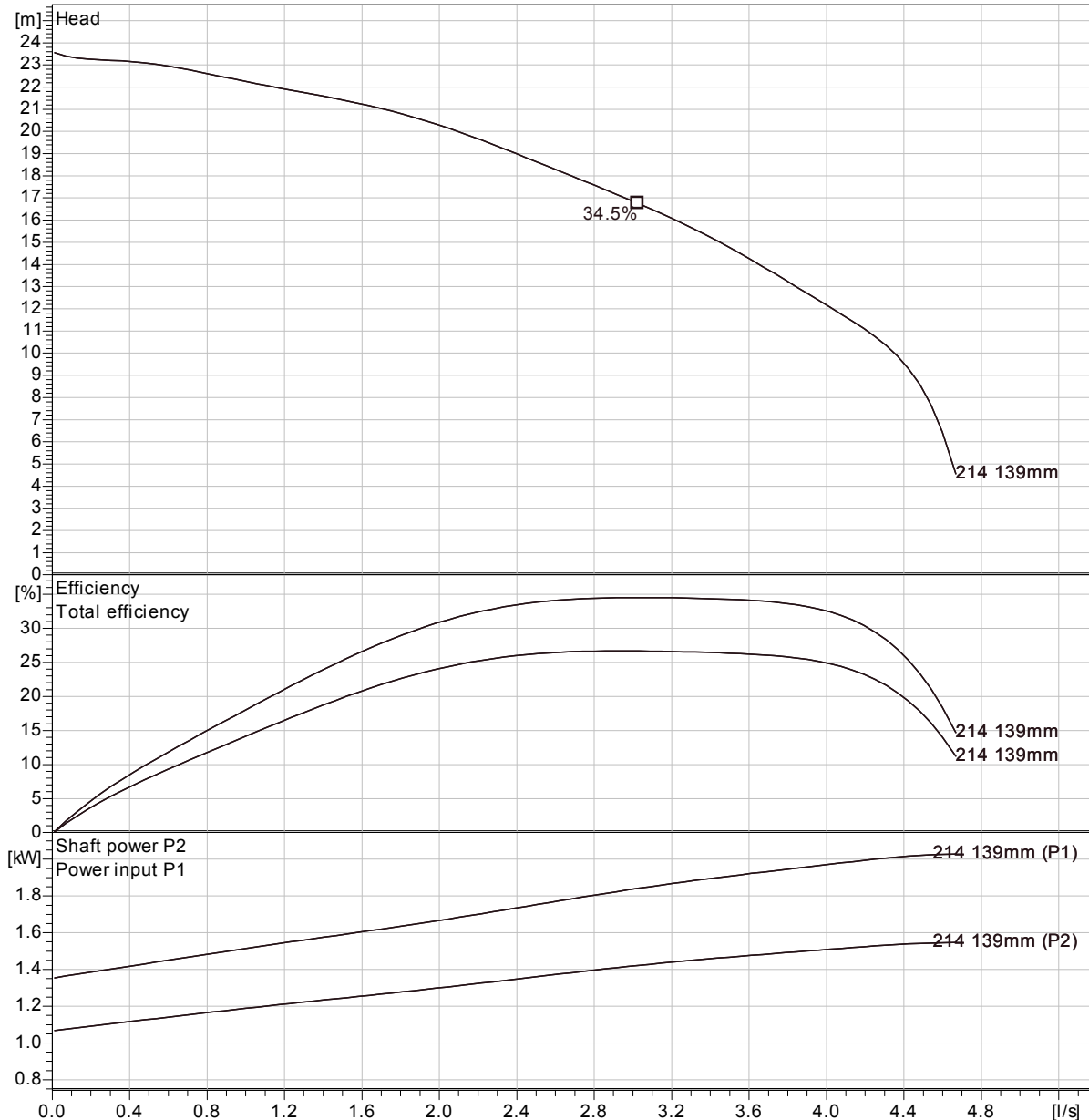
Pump

Outlet width	40 mm
Inlet diameter	
Impeller diameter	139 mm
Number of blades	10
Throughlet diameter	6 mm

Motor

Motor #	M3068.170 13-08-2BB-W 1,7KW
Stator variant	
Frequency	50 Hz
Rated voltage	190 V
Number of poles	2
Phases	3~
Rated power	1.7 kW
Rated current	8 A
Starting current	36 A
Rated speed	2705 rpm

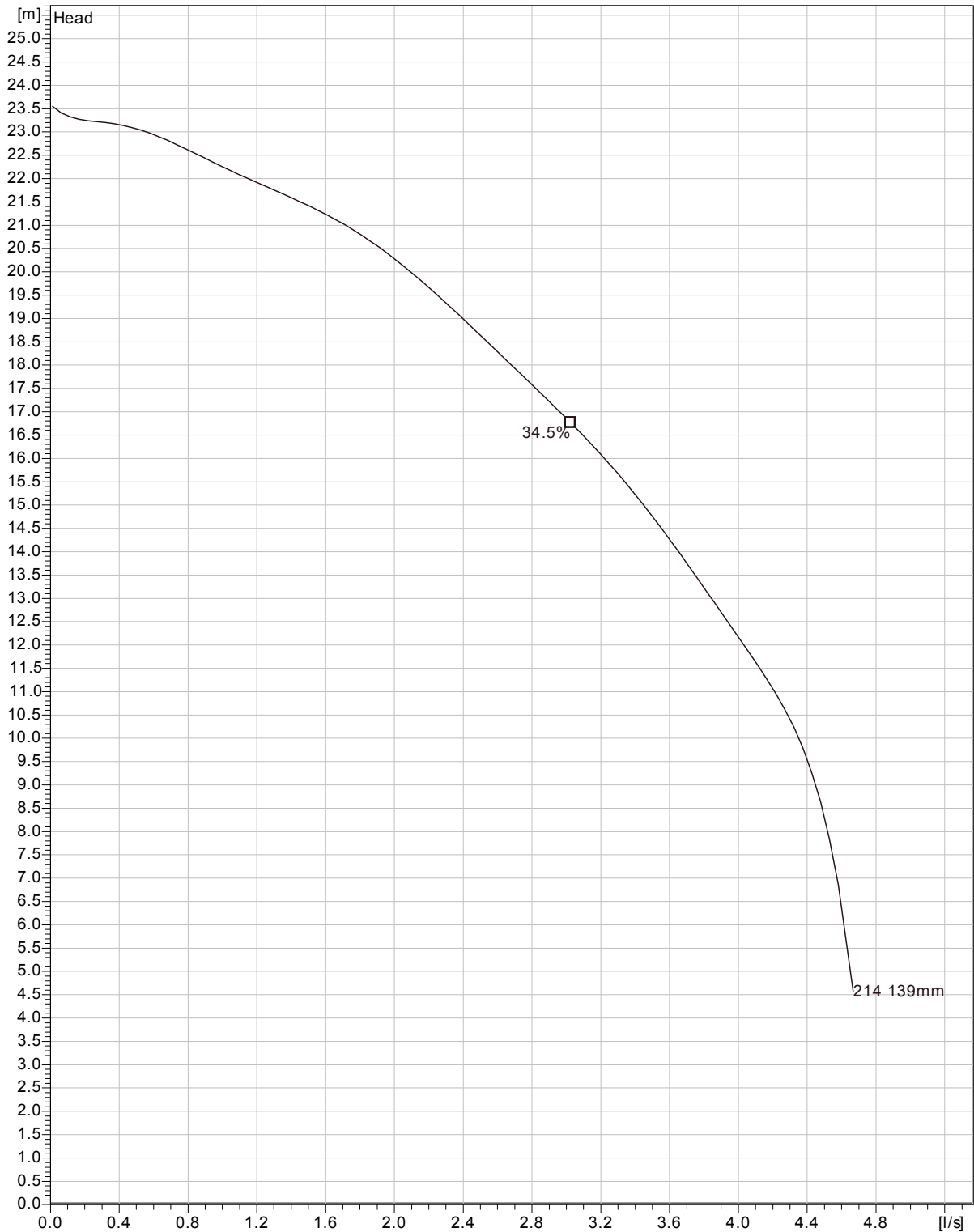
Power factor	
1/1 Load	0.86
3/4 Load	0.80
1/2 Load	0.68
Efficiency	
1/1 Load	74.5 %
3/4 Load	78.0 %
1/2 Load	78.5 %



Curve according to: ISO 9906

Project	Project ID	Created by	Created on 2012-10-25	Last update
---------	------------	------------	---------------------------------	-------------

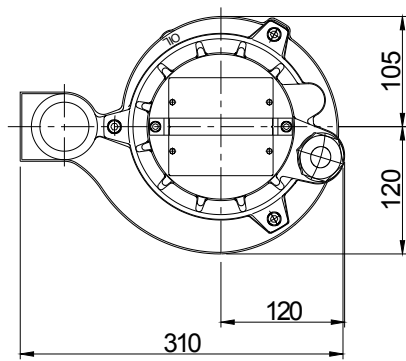
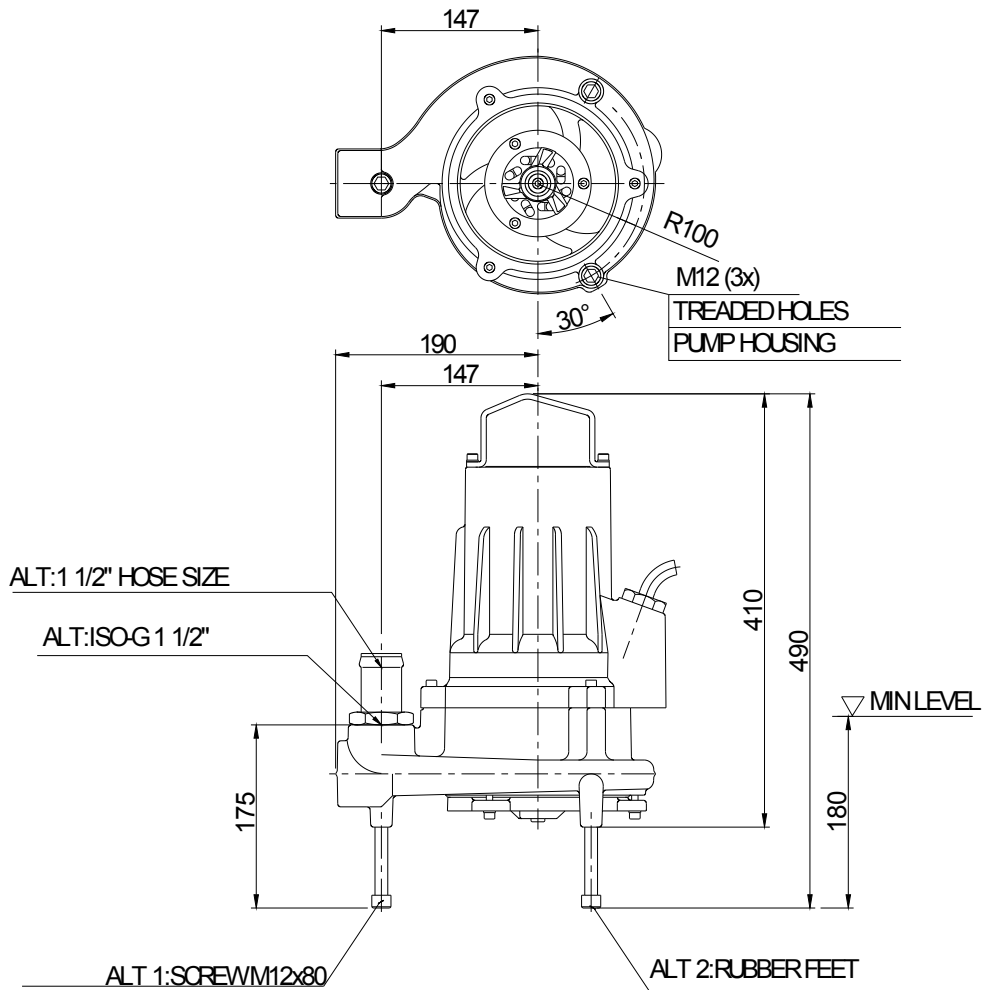
MF 3068 HT 3~ 214
Duty Analysis



Curve according to: ISO 9906

Project	Project ID	Created by	Created on 2012-10-25	Last update
---------	------------	------------	---------------------------------	-------------

MF 3068 HT 3~ 214
Dimensional drawing



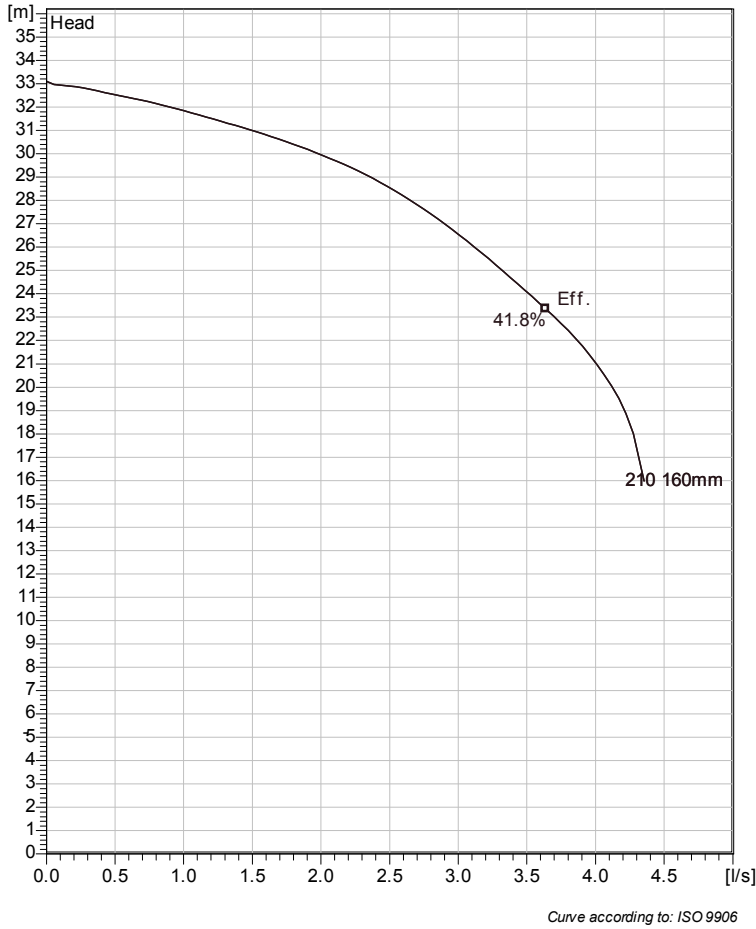
Weight

Dimensional dvg
MF3068HT

Project	Project ID	Created by	Created on	Last update
			2012-10-25	

MF 3068 HT 3~ 210

Technical specification



Note: Picture might not correspond to the current configuration.

General

Semi-open multi-channel impellers with integral grinder cutter in single volute casing for liquids containing solids and fibres.

Impeller

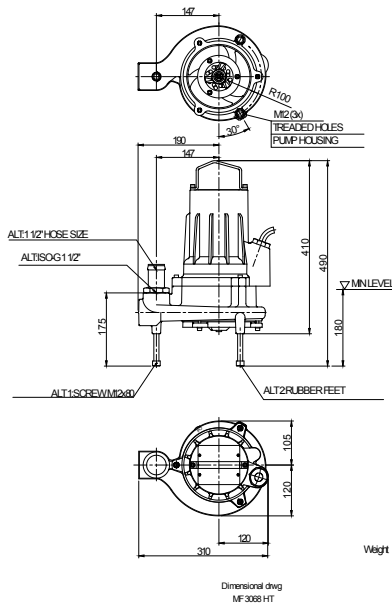
Impeller material	Grey cast iron
Outlet width	40 mm
Inlet diameter	
Impeller diameter	160 mm
Number of blades	10
Throughlet diameter	6 mm

Motor

Motor #	M3068.170 13-10-2BB-W 2,4KW
Stator variant	
Frequency	50 Hz
Rated voltage	190 V
Number of poles	2
Phases	3~
Rated power	2.4 kW
Rated current	11 A
Starting current	53 A
Rated speed	2715 rpm
Power factor	
1/1 Load	0.85
3/4 Load	0.79
1/2 Load	0.67
Efficiency	
1/1 Load	76.5 %
3/4 Load	79.5 %
1/2 Load	80.0 %

Configuration

Installation: F - Free standing Semi permanent, Wet



Project	Project ID	Created by	Created on 2012-10-25	Last update
---------	------------	------------	---------------------------------	-------------

MF 3068 HT 3~ 210

Performance curve

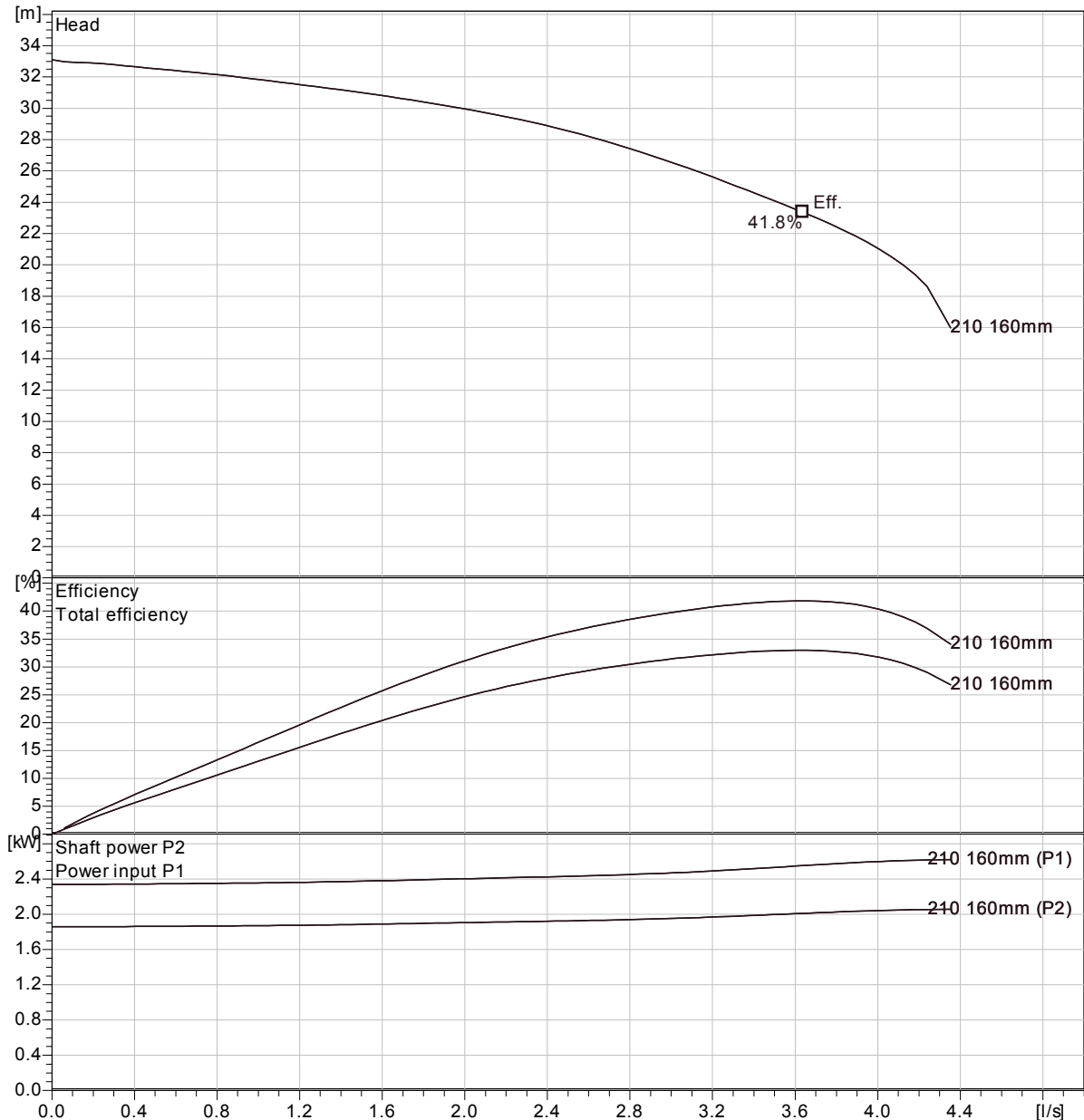
Pump

Outlet width	40 mm
Inlet diameter	
Impeller diameter	160 mm
Number of blades	10
Throughlet diameter	6 mm

Motor

Motor #	M3068.170 13-10-2BB-W 2,4KW
Stator variant	
Frequency	50 Hz
Rated voltage	190 V
Number of poles	2
Phases	3~
Rated power	2.4 kW
Rated current	11 A
Starting current	53 A
Rated speed	2715 rpm

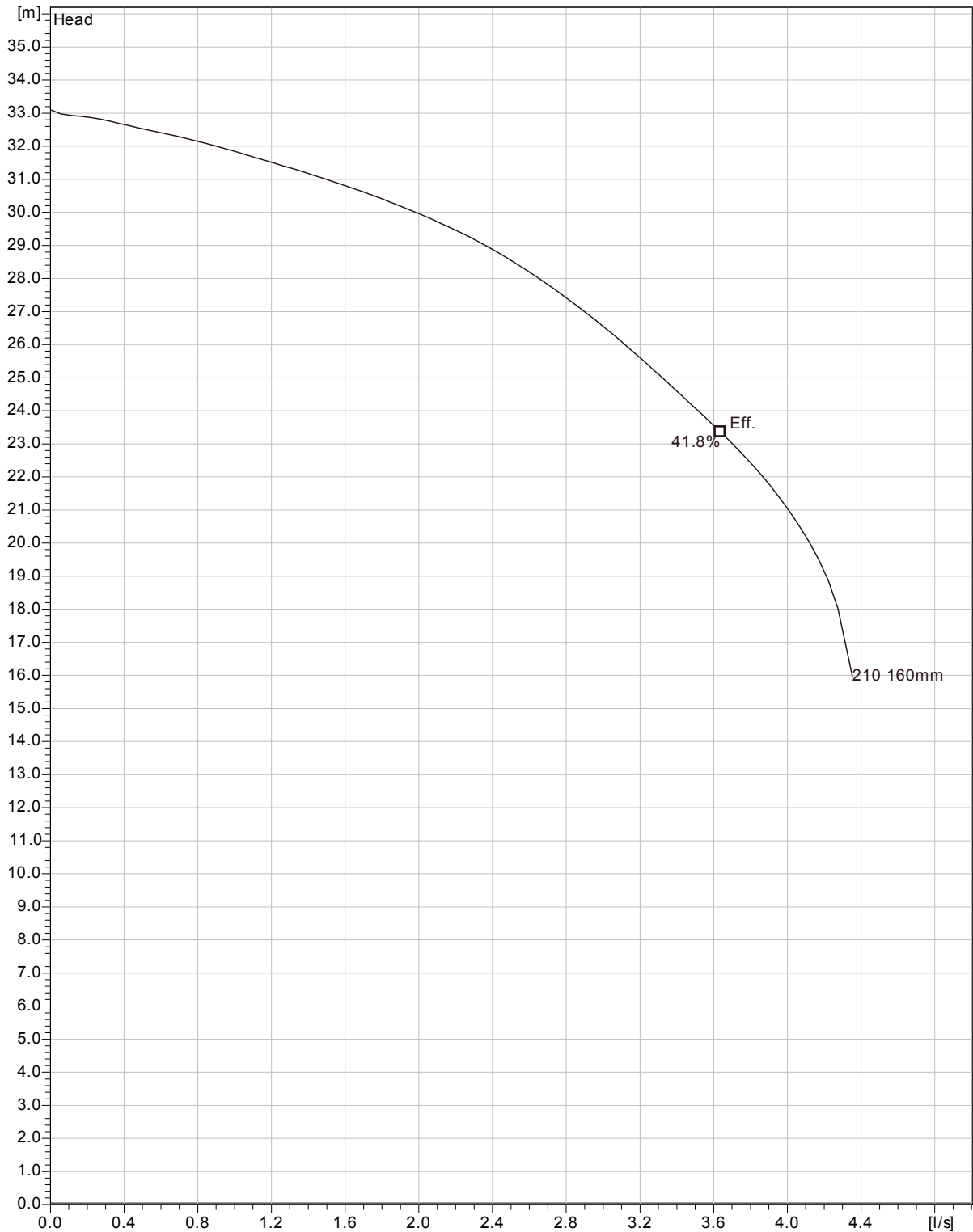
Power factor	
1/1 Load	0.85
3/4 Load	0.79
1/2 Load	0.67
Efficiency	
1/1 Load	76.5 %
3/4 Load	79.5 %
1/2 Load	80.0 %



Curve according to: ISO 9906

Project	Project ID	Created by	Created on 2012-10-25	Last update
---------	------------	------------	---------------------------------	-------------

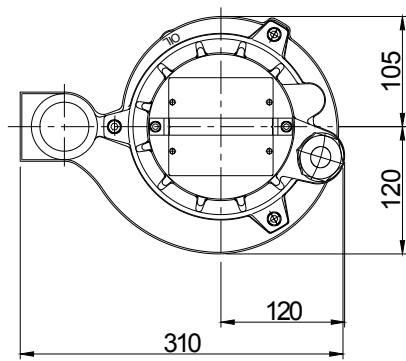
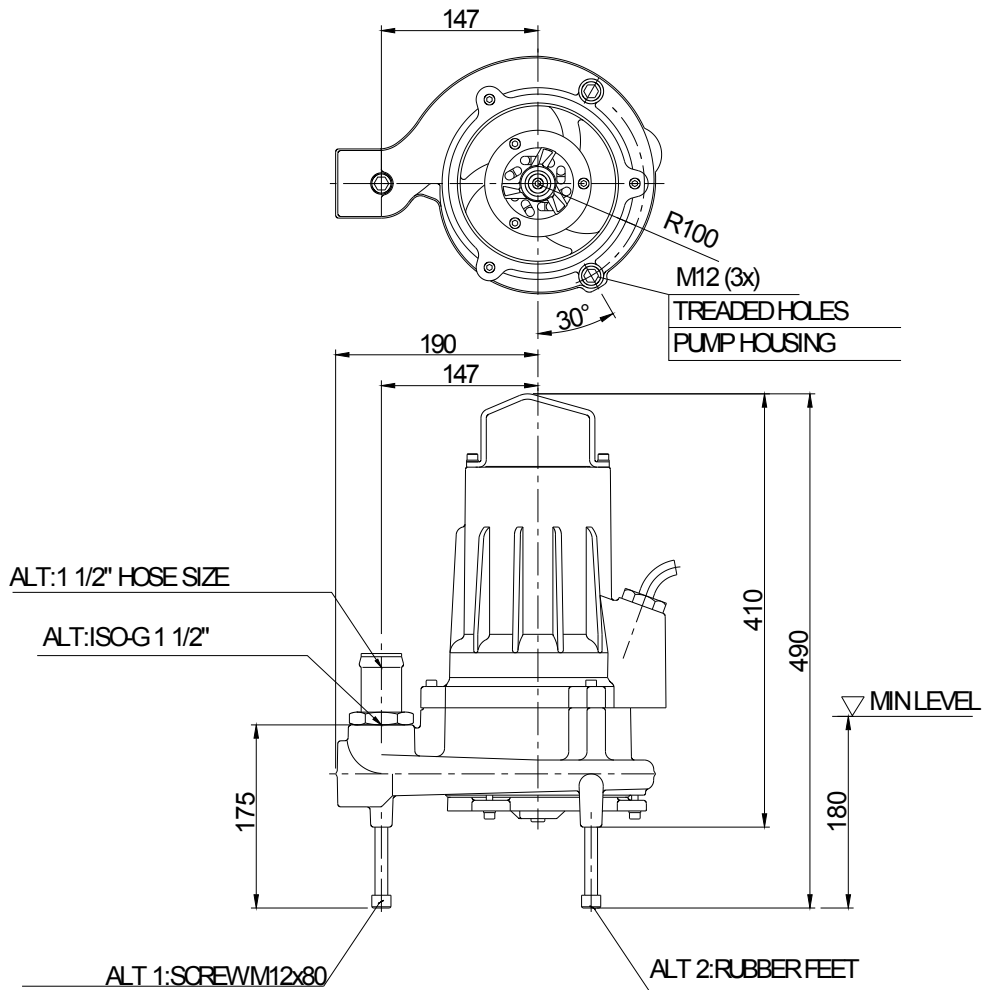
MF 3068 HT 3~ 210
Duty Analysis



Curve according to: ISO 9906

Project	Project ID	Created by	Created on	Last update
			2012-10-25	

MF 3068 HT 3~ 210
Dimensional drawing



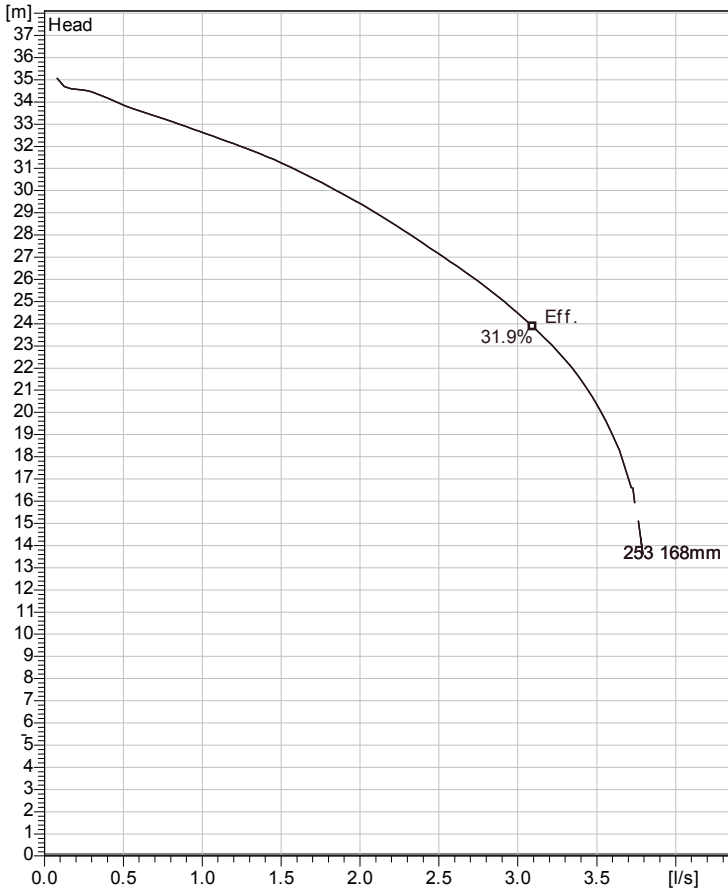
Weight

Dimensional dvg
MF3068HT

Project	Project ID	Created by	Created on	Last update
			2012-10-25	

MF 3085 HT 3~ 253

Technical specification



Curve according to: ISO 9906



Note: Picture might not correspond to the current configuration.

General

Semi-open multi-channel impellers with integral grinder cutter in single volute casing for liquids containing solids and fibres.

Impeller

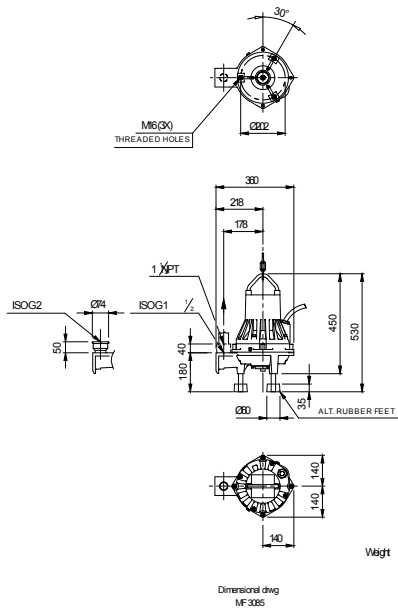
Impeller material	Grey cast iron
Outlet width	40 mm
Inlet diameter	80 mm
Impeller diameter	168 mm
Number of blades	6

Motor

Motor #	M3085.172 15-09-2AL-W 2,4KW
Stator variant	
Frequency	50 Hz
Rated voltage	230 V
Number of poles	2
Phases	3~
Rated power	2.4 kW
Rated current	8.1 A
Starting current	48 A
Rated speed	2840 rpm
Power factor	
1/1 Load	0.92
3/4 Load	0.89
1/2 Load	0.82
Efficiency	
1/1 Load	80.5 %
3/4 Load	82.5 %
1/2 Load	82.0 %

Configuration

Installation: F - Free standing Semi permanent, Wet



Project	Project ID	Created by	Created on 2012-10-25	Last update
---------	------------	------------	---------------------------------	-------------

MF 3085 HT 3~ 253

Performance curve

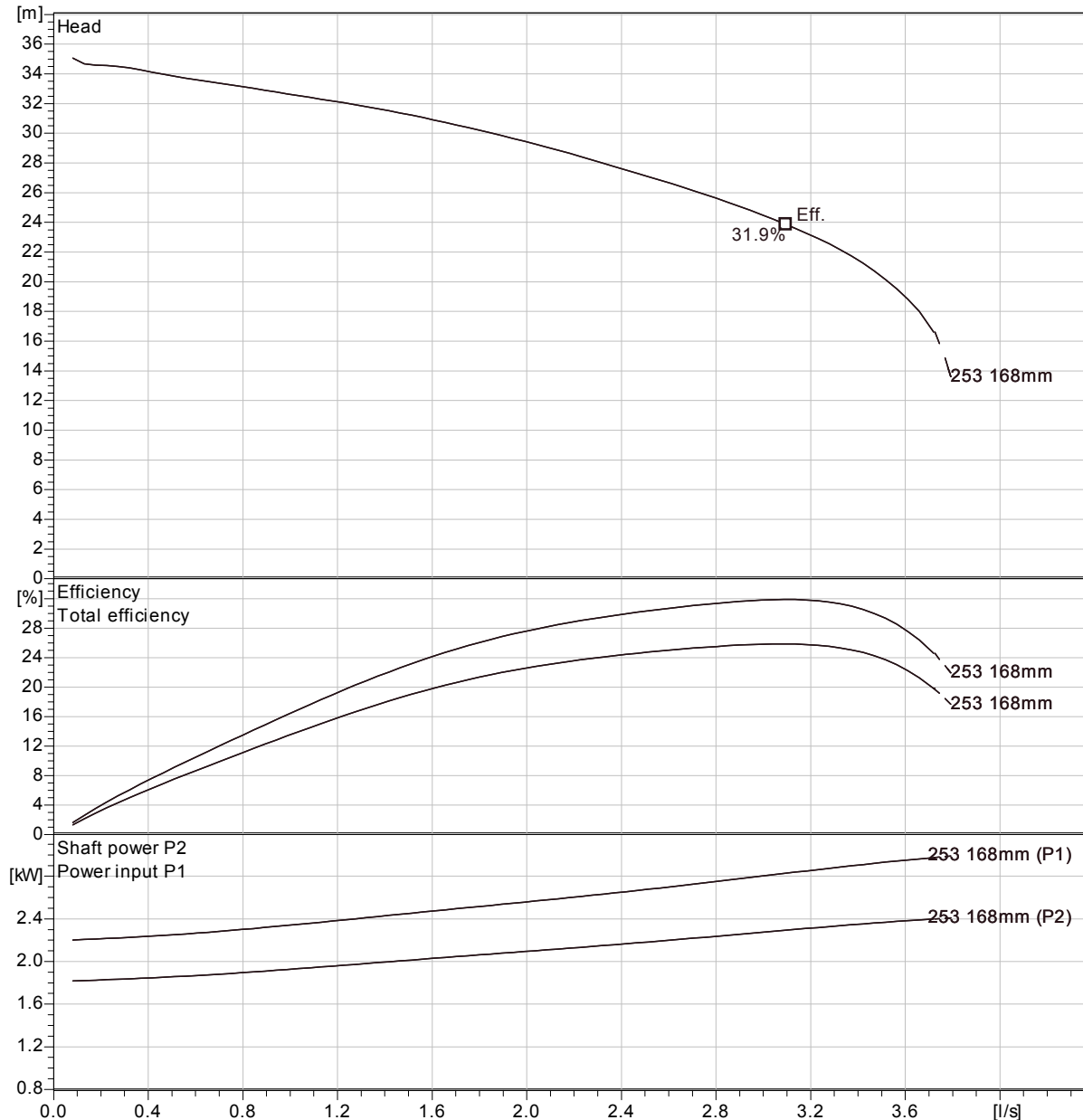
Pump

Outlet width	40 mm
Inlet diameter	80 mm
Impeller diameter	168 mm
Number of blades	6

Motor

Motor #	M3085.172 15-09-2AL-W 2,4KW
Stator variant	
Frequency	50 Hz
Rated voltage	230 V
Number of poles	2
Phases	3~
Rated power	2.4 kW
Rated current	8.1 A
Starting current	48 A
Rated speed	2840 rpm

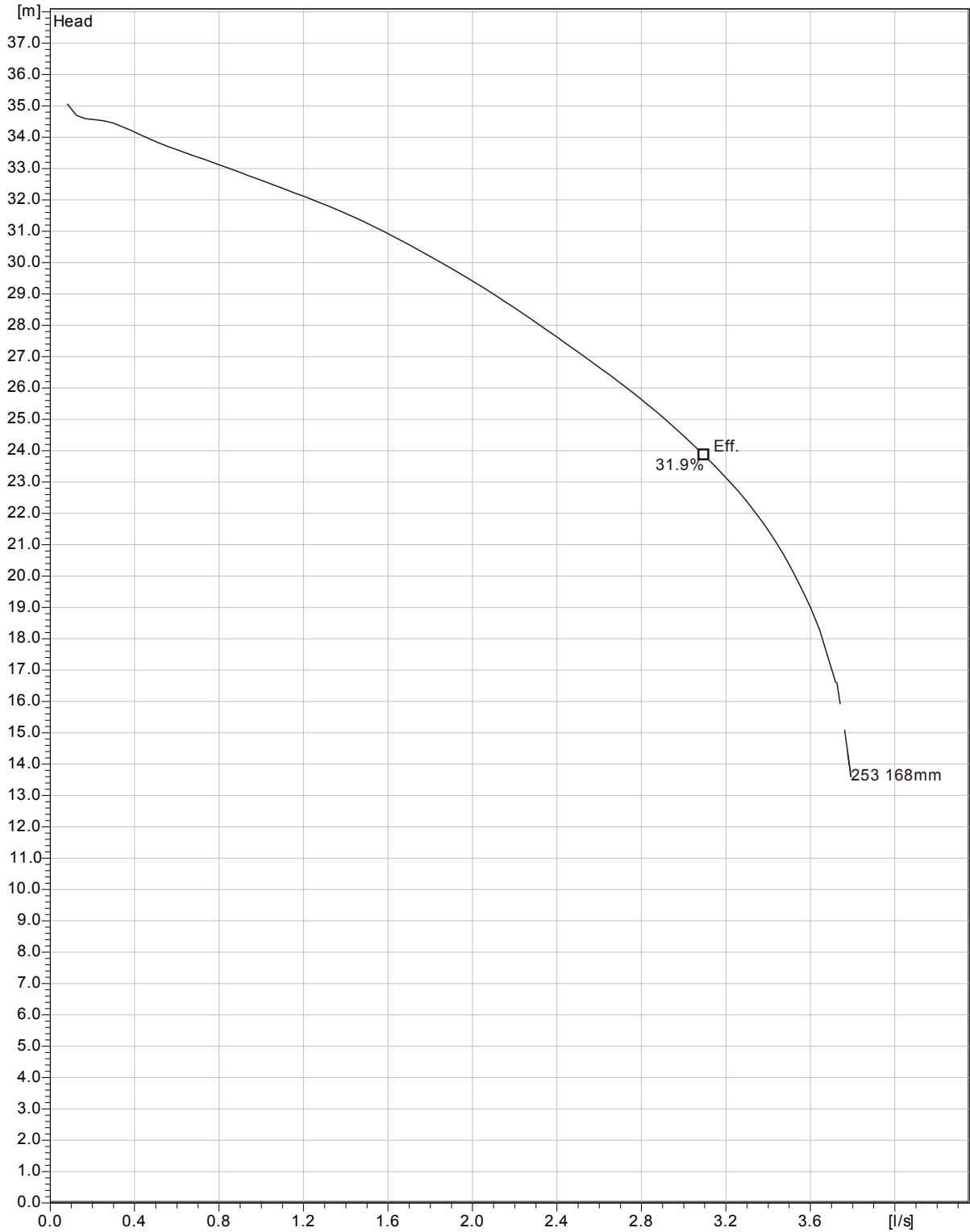
Power factor	
1/1 Load	0.92
3/4 Load	0.89
1/2 Load	0.82
Efficiency	
1/1 Load	80.5 %
3/4 Load	82.5 %
1/2 Load	82.0 %



Curve according to: ISO 9906

Project	Project ID	Created by	Created on 2012-10-25	Last update
---------	------------	------------	---------------------------------	-------------

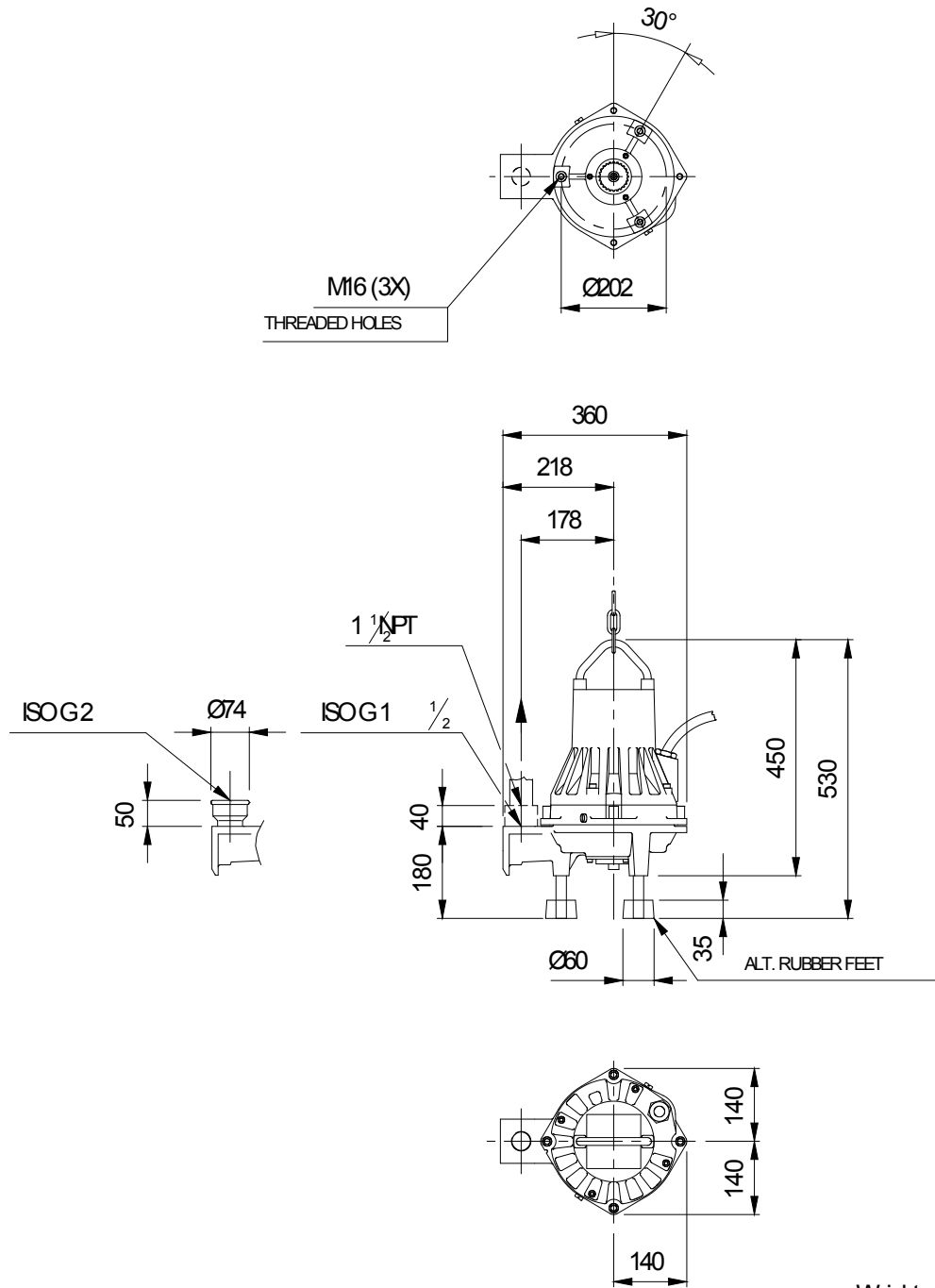
MF 3085 HT 3~ 253
Duty Analysis



Curve according to: ISO 9906

Project	Project ID	Created by	Created on 2012-10-25	Last update
---------	------------	------------	---------------------------------	-------------

MF 3085 HT 3~ 253
Dimensional drawing



Weight

Dimensional dwg
MF 3085

Project	Project ID	Created by	Created on	Last update
			2012-10-25	

MP 3068 HT 3~ 214

Performance curve

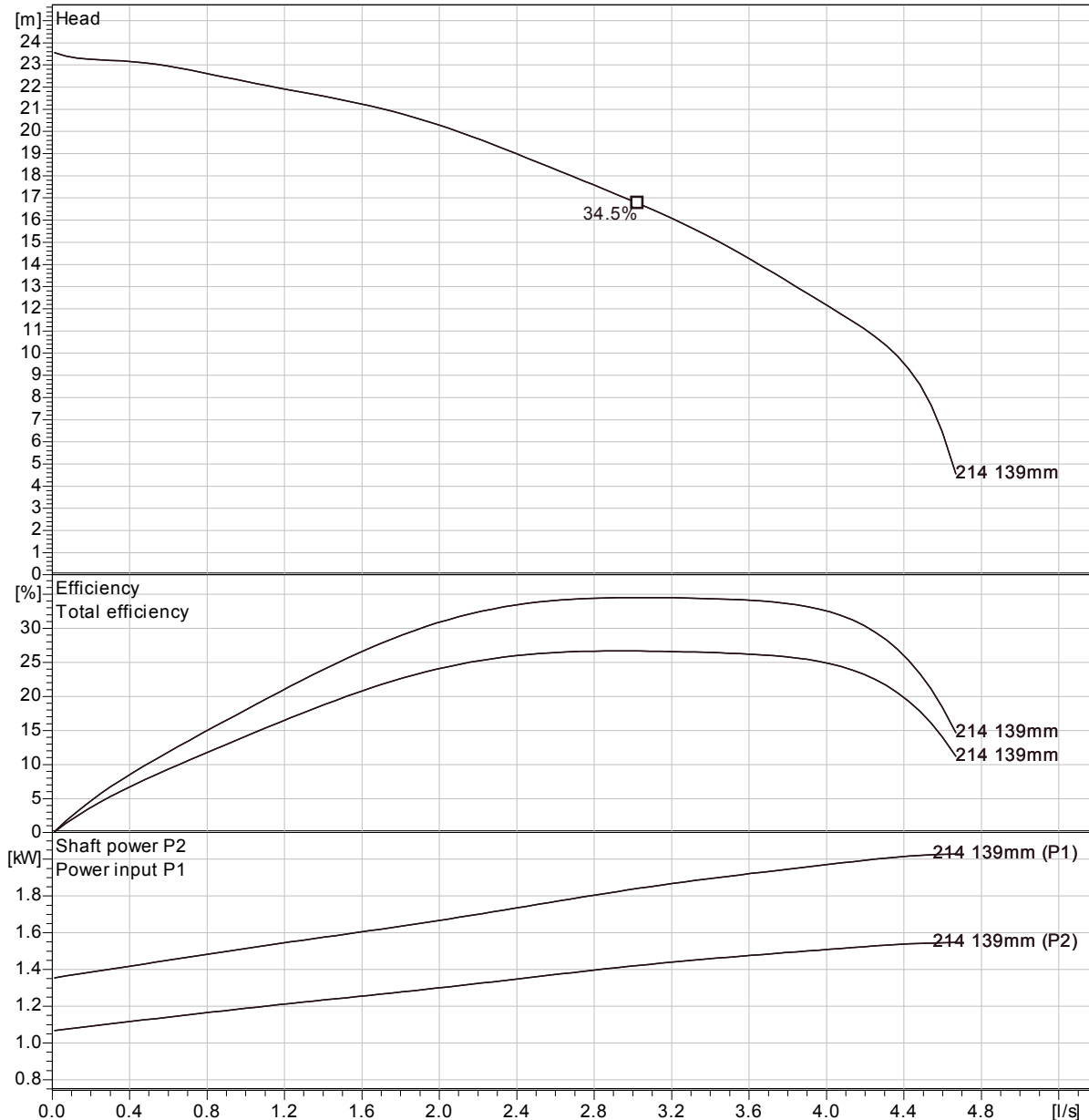
Pump

Outlet width	40 mm
Inlet diameter	
Impeller diameter	139 mm
Number of blades	10
Throughlet diameter	6 mm

Motor

Motor #	M3068.170 13-08-2BB-W 1,7KW
Stator variant	
Frequency	50 Hz
Rated voltage	190 V
Number of poles	2
Phases	3~
Rated power	1.7 kW
Rated current	8 A
Starting current	36 A
Rated speed	2705 rpm

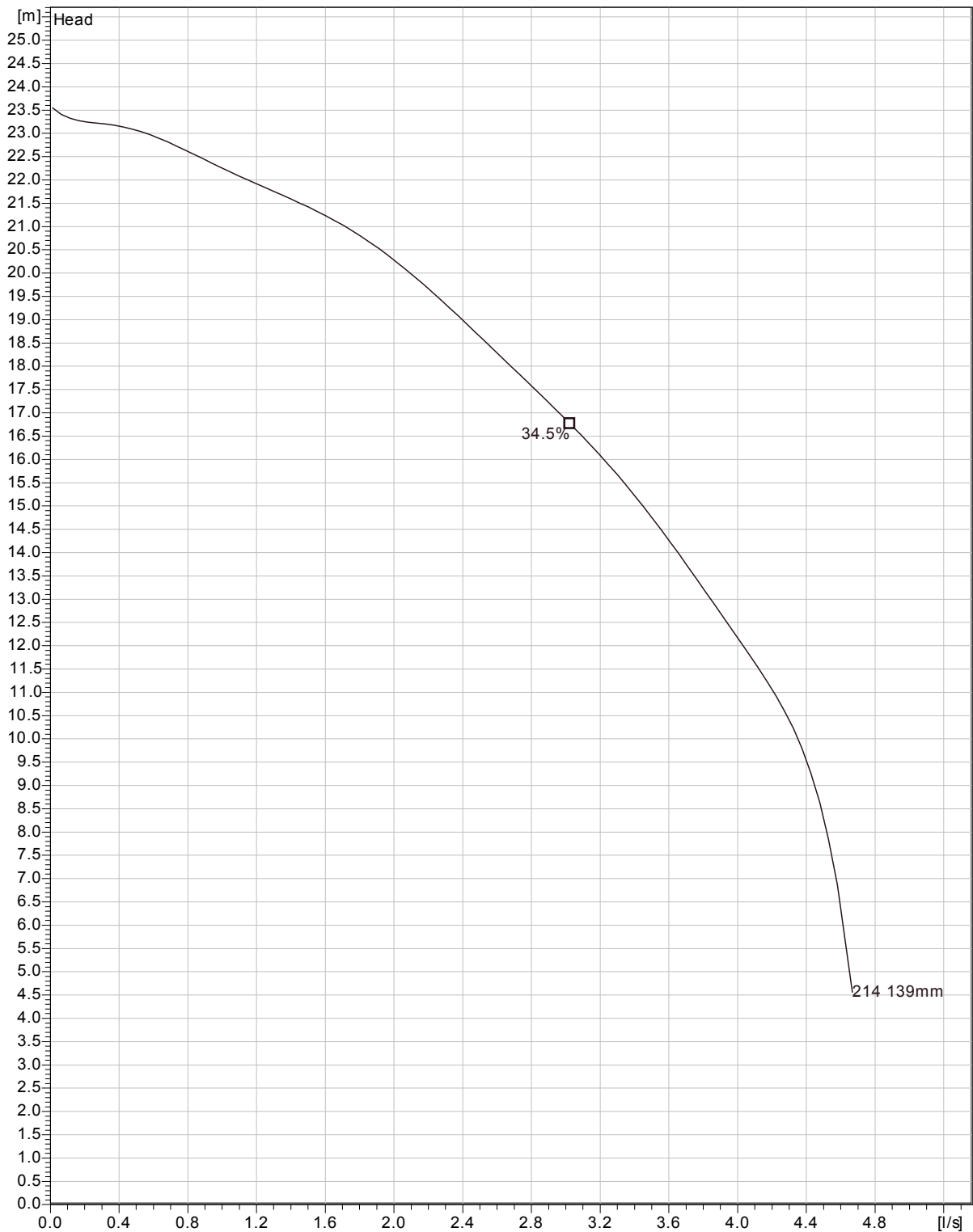
Power factor	
1/1 Load	0.86
3/4 Load	0.80
1/2 Load	0.68
Efficiency	
1/1 Load	74.5 %
3/4 Load	78.0 %
1/2 Load	78.5 %



Curve according to: ISO 9906

Project	Project ID	Created by	Created on 2012-10-25	Last update
---------	------------	------------	---------------------------------	-------------

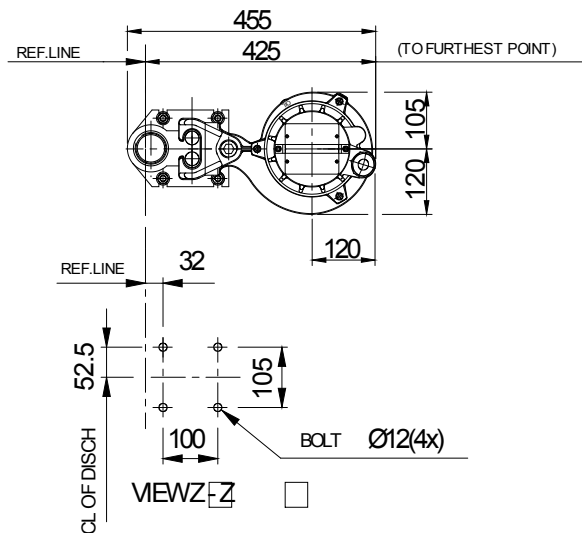
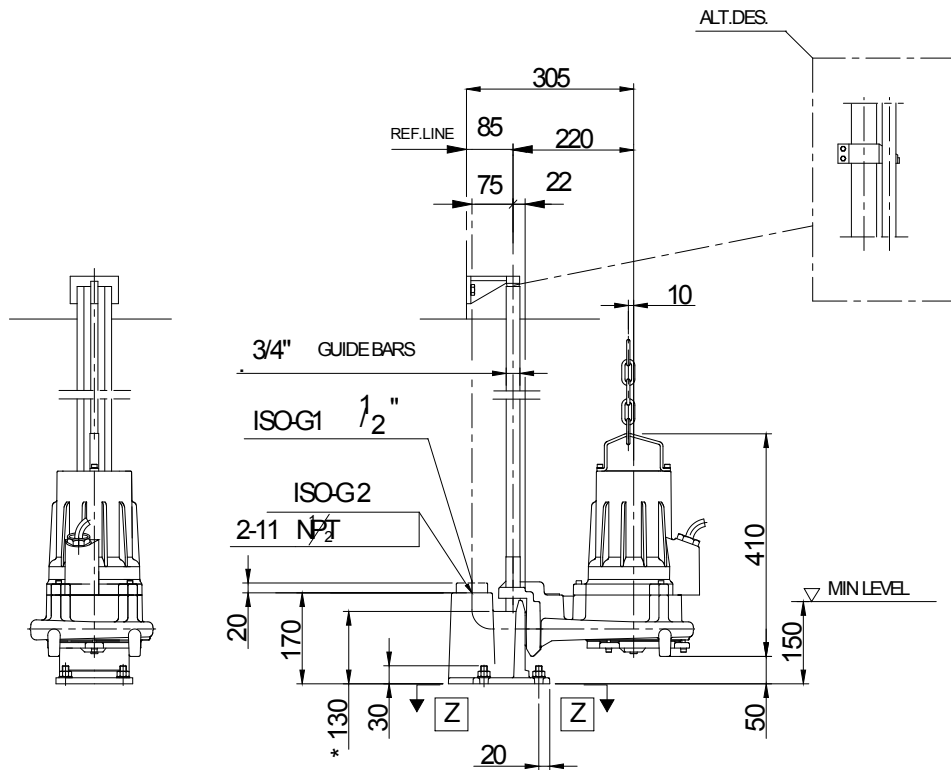
MP 3068 HT 3~ 214
Duty Analysis



Curve according to: ISO 9906

Project	Project ID	Created by	Created on 2012-10-25	Last update
---------	------------	------------	---------------------------------	-------------

MP 3068 HT 3~ 214
Dimensional drawing



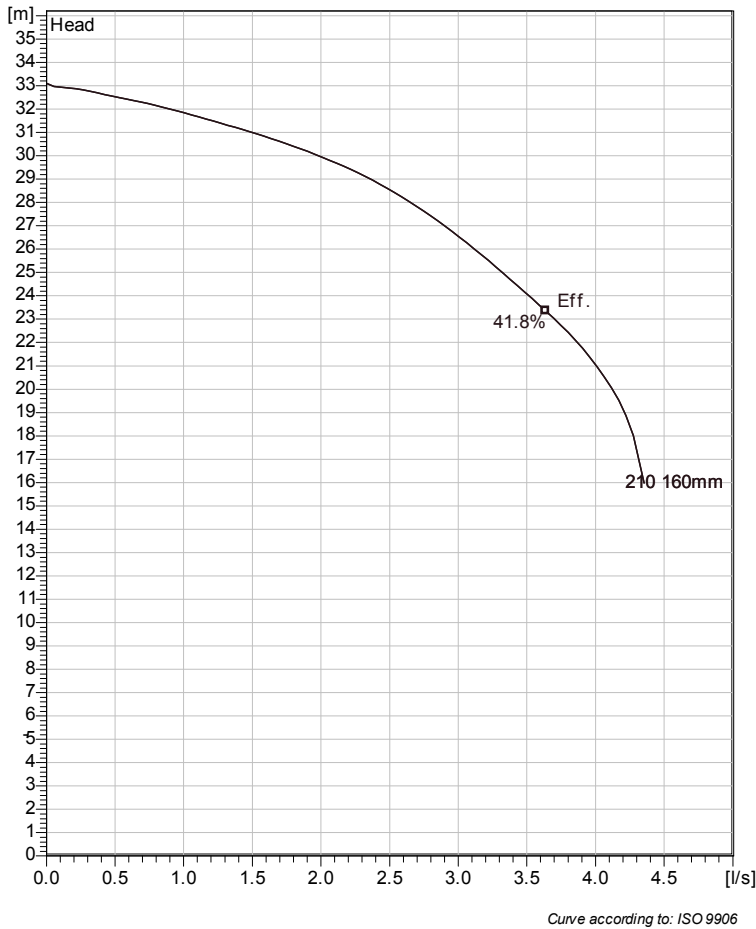
* DIMENSION TO ENDS OF GUIDE BARS

MP 3068 HT

Project	Project ID	Created by	Created on	Last update
			2012-10-25	

MP 3068 HT 3~ 210

Technical specification



Note: Picture might not correspond to the current configuration.

General

Semi-open multi-channel impellers with integral grinder cutter in single volute casing for liquids containing solids and fibres.

Impeller

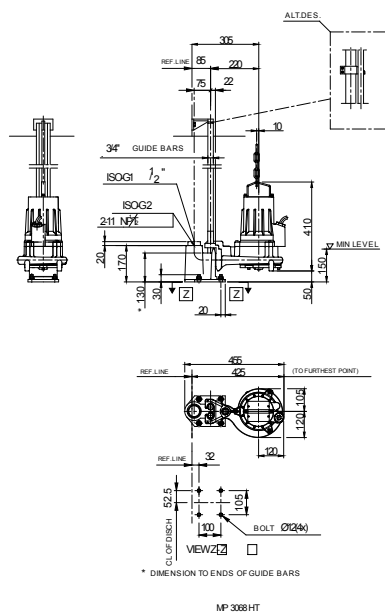
Impeller material	Grey cast iron
Outlet width	40 mm
Inlet diameter	
Impeller diameter	160 mm
Number of blades	10
Throughlet diameter	6 mm

Motor

Motor #	M3068.170 13-10-2BB-W 2,4KW
Stator variant	
Frequency	50 Hz
Rated voltage	190 V
Number of poles	2
Phases	3~
Rated power	2.4 kW
Rated current	11 A
Starting current	53 A
Rated speed	2715 rpm
Power factor	
1/1 Load	0.85
3/4 Load	0.79
1/2 Load	0.67
Efficiency	
1/1 Load	76.5 %
3/4 Load	79.5 %
1/2 Load	80.0 %

Configuration

Installation: P - Semi permanent, Wet



Project	Project ID	Created by	Created on 2012-10-25	Last update
---------	------------	------------	---------------------------------	-------------

MP 3068 HT 3~ 210

Performance curve

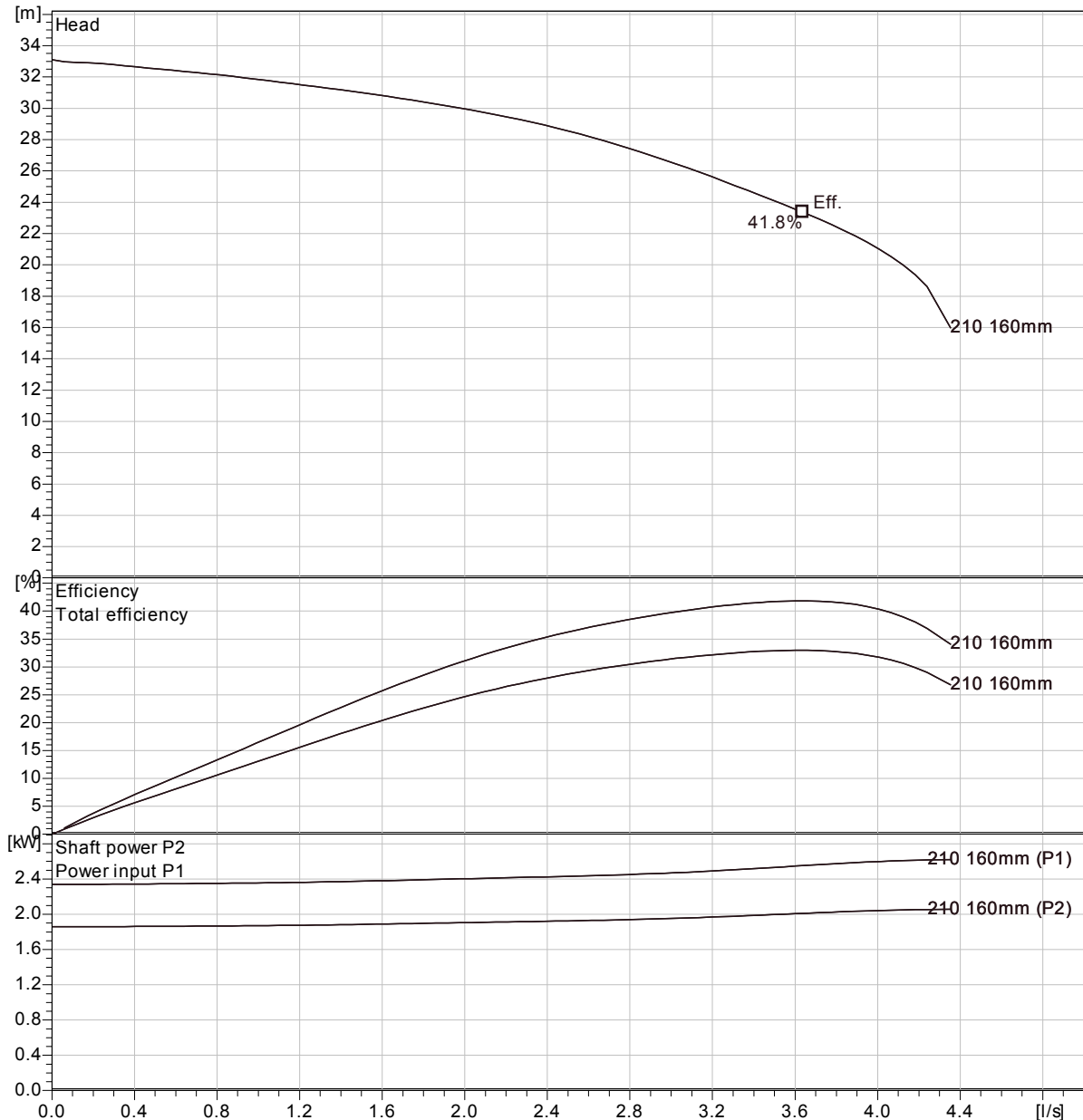
Pump

Outlet width	40 mm
Inlet diameter	
Impeller diameter	160 mm
Number of blades	10
Throughlet diameter	6 mm

Motor

Motor #	M3068.170 13-10-2BB-W 2,4KW
Stator variant	
Frequency	50 Hz
Rated voltage	190 V
Number of poles	2
Phases	3~
Rated power	2.4 kW
Rated current	11 A
Starting current	53 A
Rated speed	2715 rpm

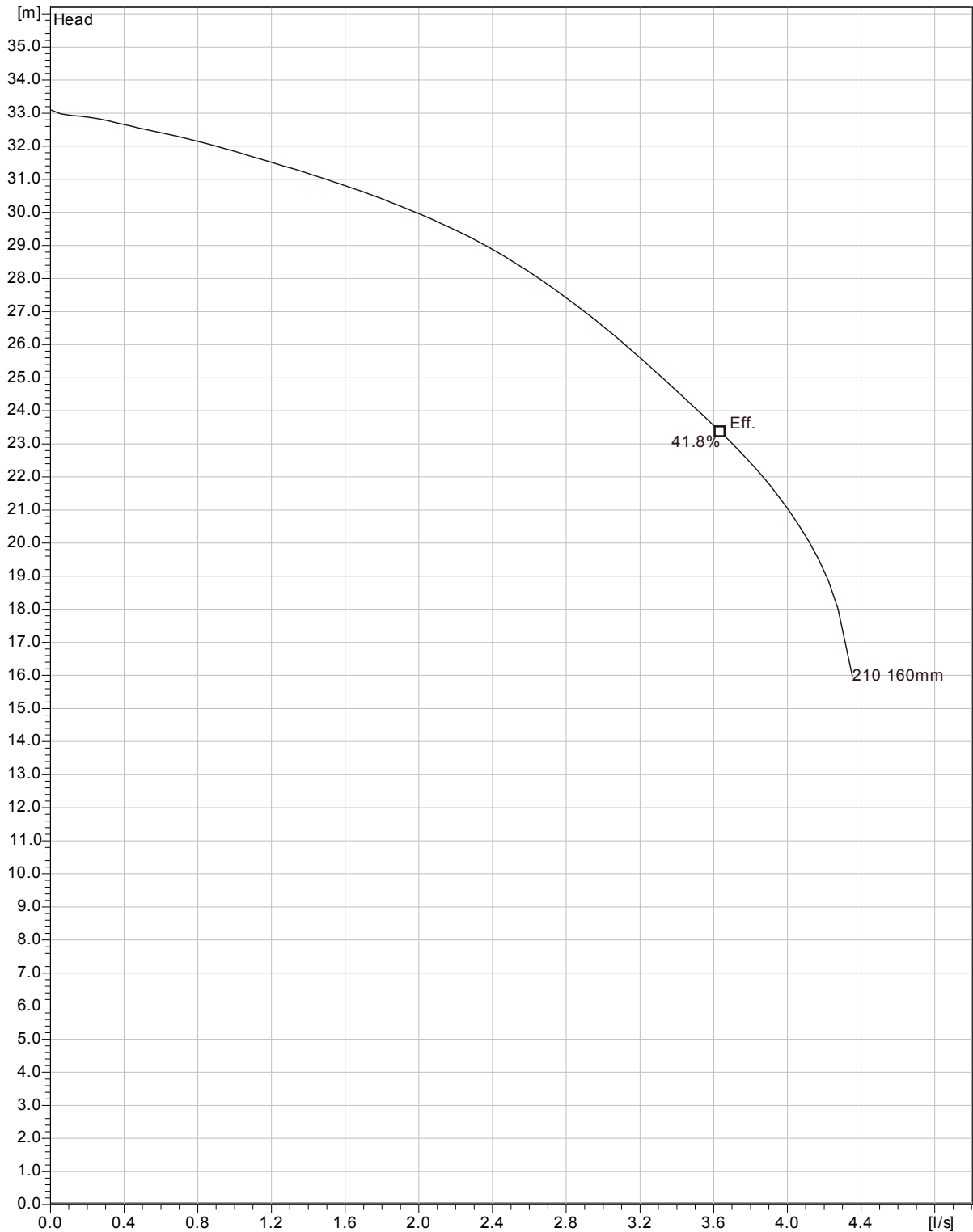
Power factor	
1/1 Load	0.85
3/4 Load	0.79
1/2 Load	0.67
Efficiency	
1/1 Load	76.5 %
3/4 Load	79.5 %
1/2 Load	80.0 %



Curve according to: ISO 9906

Project	Project ID	Created by	Created on 2012-10-25	Last update
---------	------------	------------	---------------------------------	-------------

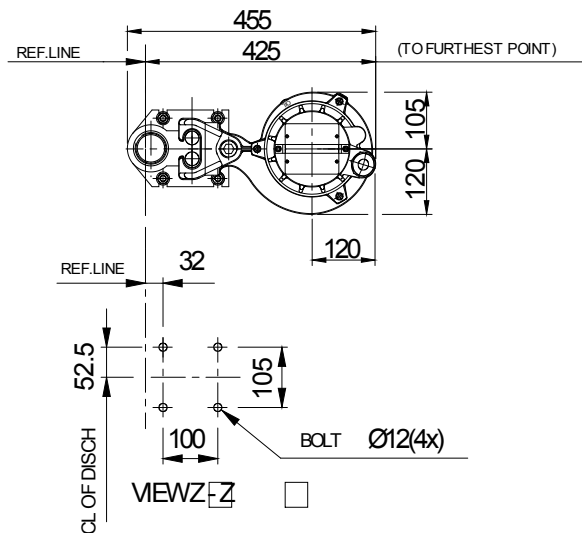
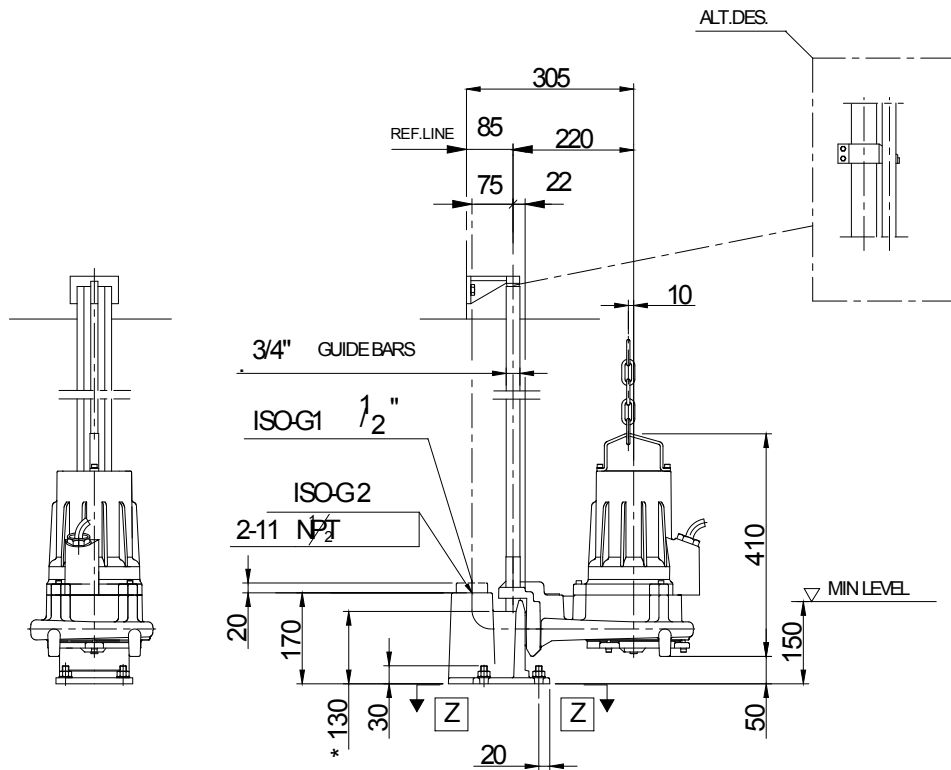
MP 3068 HT 3~ 210
Duty Analysis



Curve according to: ISO 9906

Project	Project ID	Created by	Created on	Last update
			2012-10-25	

MP 3068 HT 3~ 210
Dimensional drawing



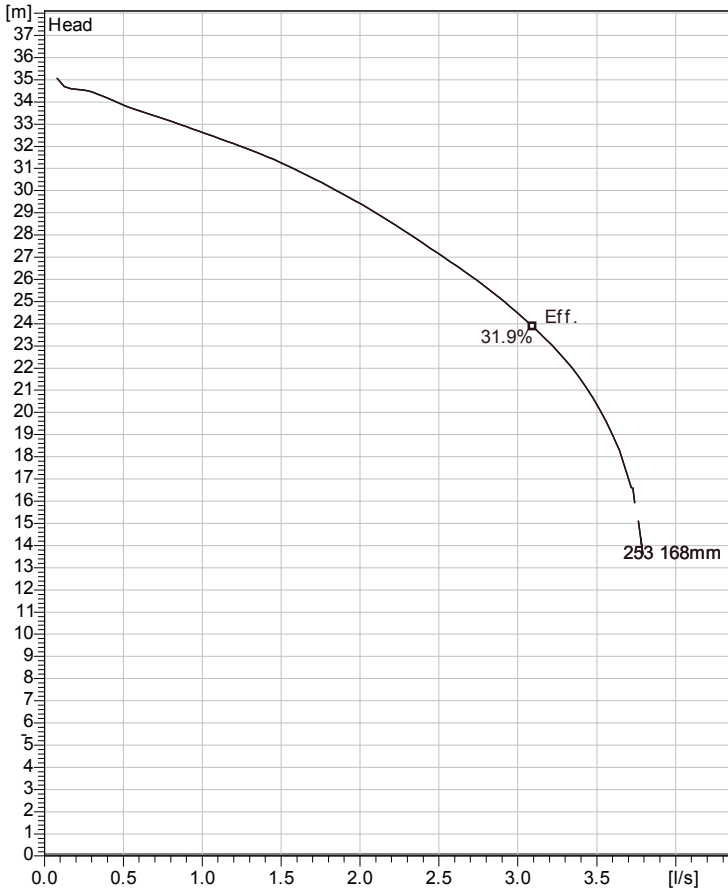
* DIMENSION TO ENDS OF GUIDE BARS

MP 3068 HT

Project	Project ID	Created by	Created on	Last update
			2012-10-25	

MP 3085 HT 3~ 253

Technical specification



Curve according to: ISO 9906



Note: Picture might not correspond to the current configuration.

General

Semi-open multi-channel impellers with integral grinder cutter in single volute casing for liquids containing solids and fibres.

Impeller

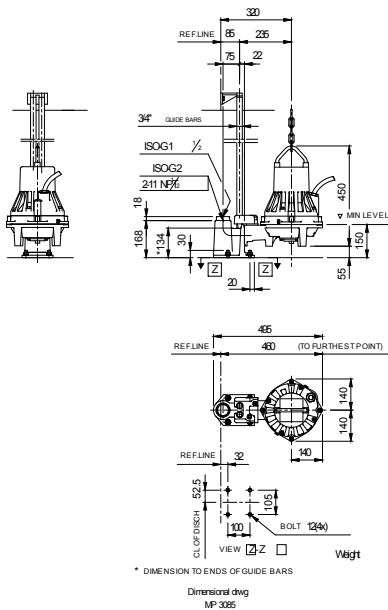
Impeller material	Grey cast iron
Outlet width	40 mm
Inlet diameter	80 mm
Impeller diameter	168 mm
Number of blades	6

Motor

Motor #	M3085.172 15-09-2AL-W 2,4KW
Stator variant	
Frequency	50 Hz
Rated voltage	230 V
Number of poles	2
Phases	3~
Rated power	2.4 kW
Rated current	8.1 A
Starting current	48 A
Rated speed	2840 rpm
Power factor	
1/1 Load	0.92
3/4 Load	0.89
1/2 Load	0.82
Efficiency	
1/1 Load	80.5 %
3/4 Load	82.5 %
1/2 Load	82.0 %

Configuration

Installation: P - Semi permanent, Wet



Project	Project ID	Created by	Created on 2012-10-25	Last update
---------	------------	------------	---------------------------------	-------------

MP 3085 HT 3~ 253

Performance curve

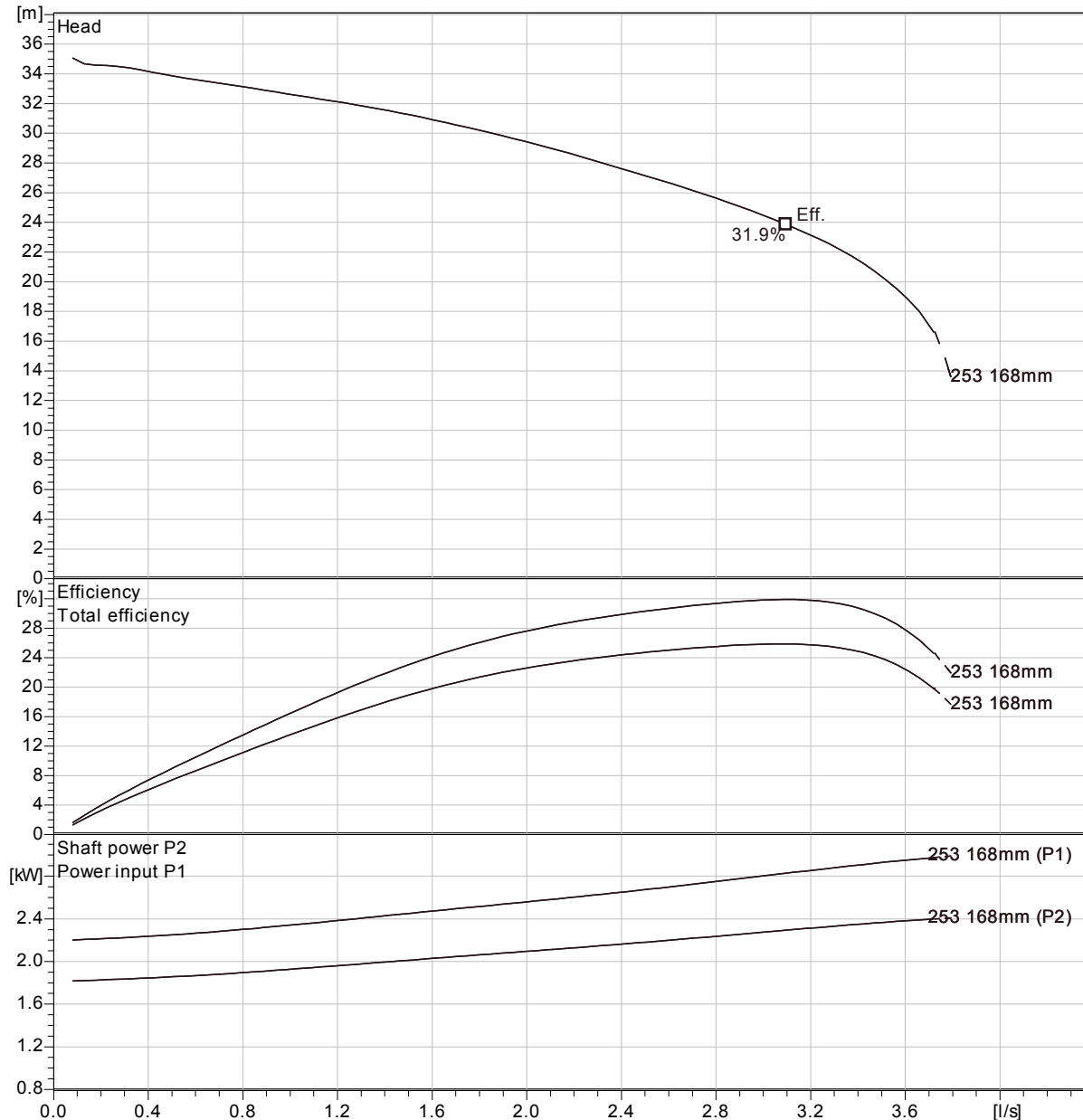
Pump

Outlet width	40 mm
Inlet diameter	80 mm
Impeller diameter	168 mm
Number of blades	6

Motor

Motor #	M3085.172 15-09-2AL-W 2,4KW
Stator variant	
Frequency	50 Hz
Rated voltage	230 V
Number of poles	2
Phases	3~
Rated power	2.4 kW
Rated current	8.1 A
Starting current	48 A
Rated speed	2840 rpm

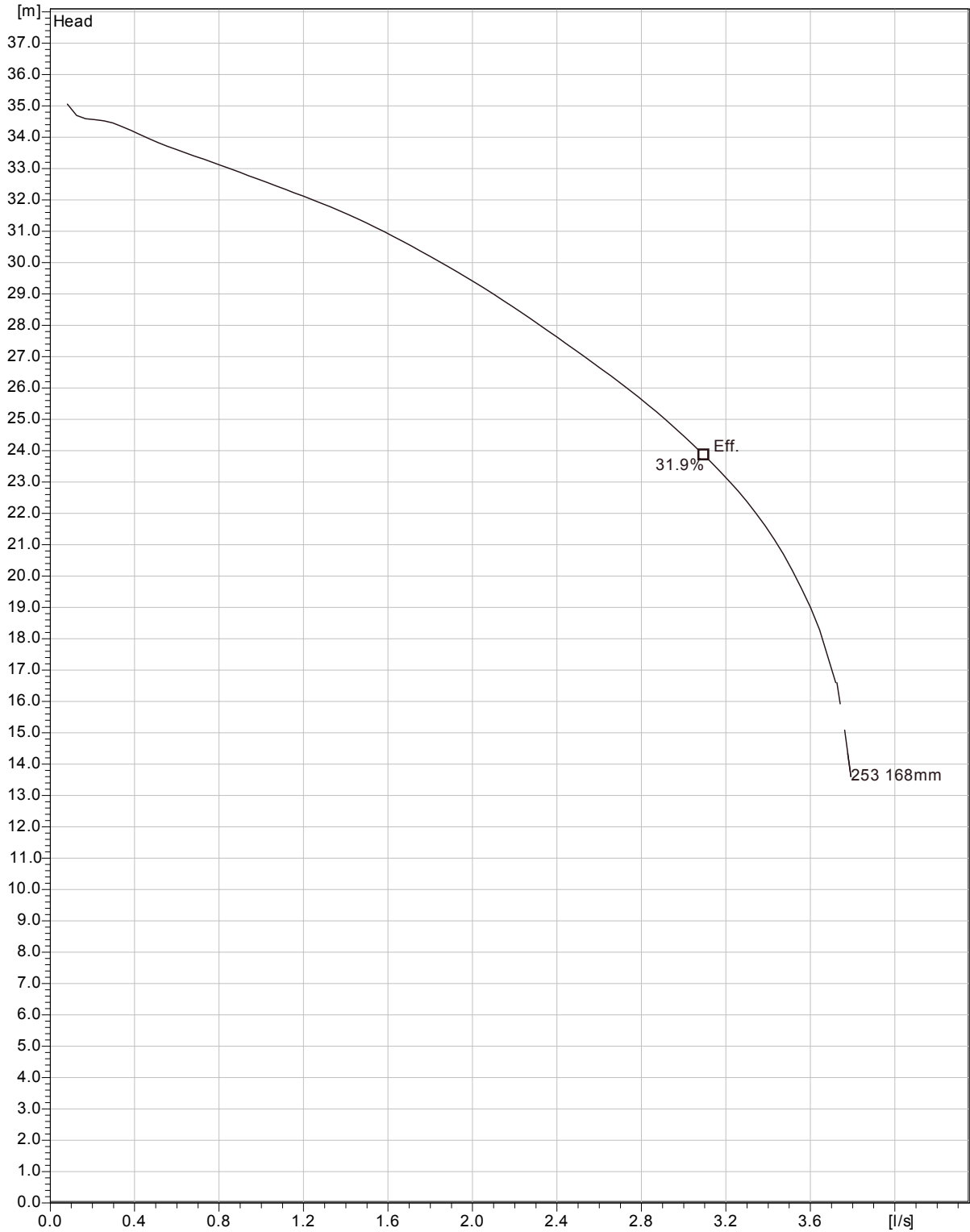
Power factor	
1/1 Load	0.92
3/4 Load	0.89
1/2 Load	0.82
Efficiency	
1/1 Load	80.5 %
3/4 Load	82.5 %
1/2 Load	82.0 %



Curve according to: ISO 9906

Project	Project ID	Created by	Created on 2012-10-25	Last update
---------	------------	------------	---------------------------------	-------------

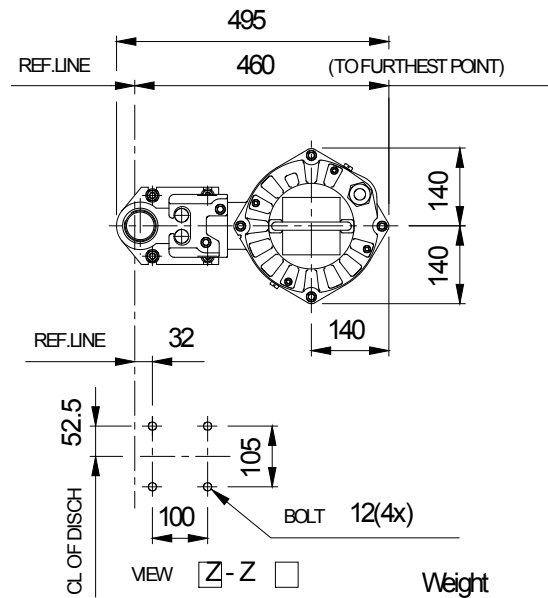
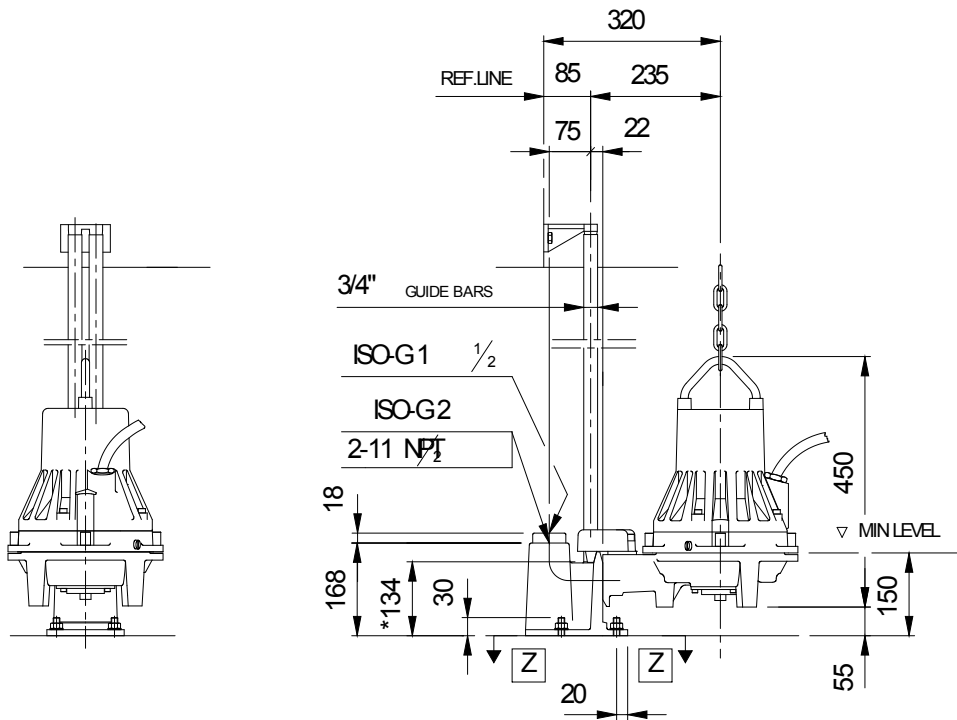
MP 3085 HT 3~ 253
Duty Analysis



Curve according to: ISO 9906

Project	Project ID	Created by	Created on 2012-10-25	Last update
---------	------------	------------	---------------------------------	-------------

MP 3085 HT 3~ 253
Dimensional drawing



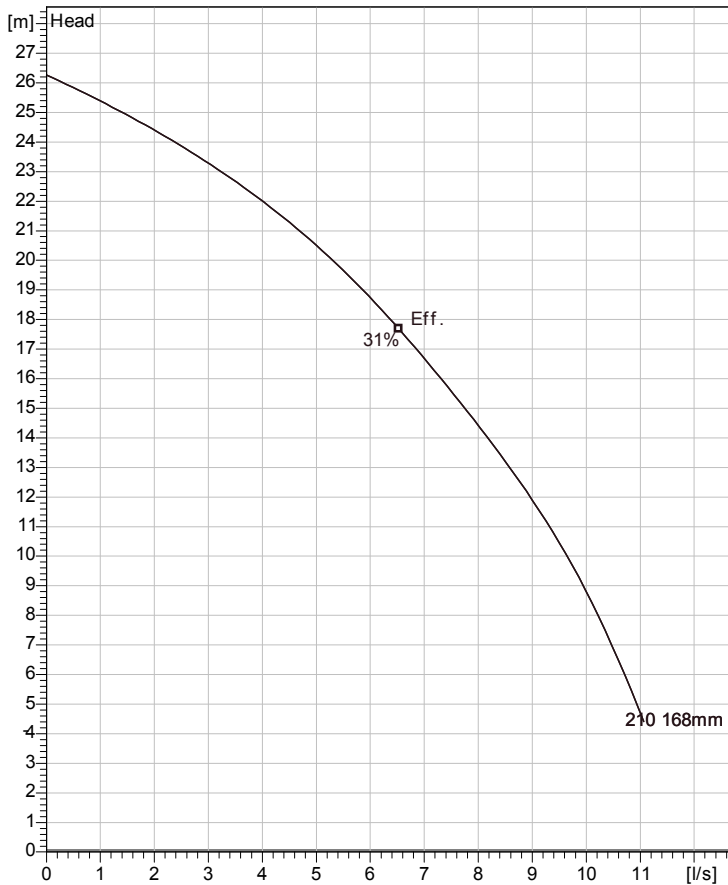
* DIMENSION TO ENDS OF GUIDE BARS

Dimensional drwg
MP 3085

Project	Project ID	Created by	Created on 2012-10-25	Last update
---------	------------	------------	--------------------------	-------------

MP 3102 LT 3~ 210

Technical specification



Curve according to: ISO 9906



Note: Picture might not correspond to the current configuration.

General

Semi-open multi-channel impellers with integral grinder cutter in single volute casing for liquids containing solids and fibres.

Impeller

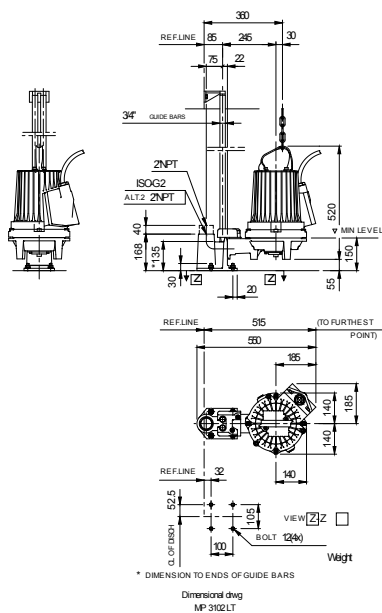
Impeller material	Grey cast iron
Outlet width	50 mm
Inlet diameter	85 mm
Impeller diameter	168 mm
Number of blades	6

Motor

Motor #	M3102.170 18-10-2AL-W 4,4KW
Stator variant	
Frequency	50 Hz
Rated voltage	415 V
Number of poles	2
Phases	3~
Rated power	4.4 kW
Rated current	8.2 A
Starting current	54 A
Rated speed	2855 rpm
Power factor	
1/1 Load	0.94
3/4 Load	0.92
1/2 Load	0.88
Efficiency	
1/1 Load	79.5 %
3/4 Load	81.0 %
1/2 Load	80.5 %

Configuration

Installation: P - Semi permanent, Wet



Project	Project ID	Created by	Created on 2012-10-25	Last update
---------	------------	------------	---------------------------------	-------------

MP 3102 LT 3~ 210

Performance curve

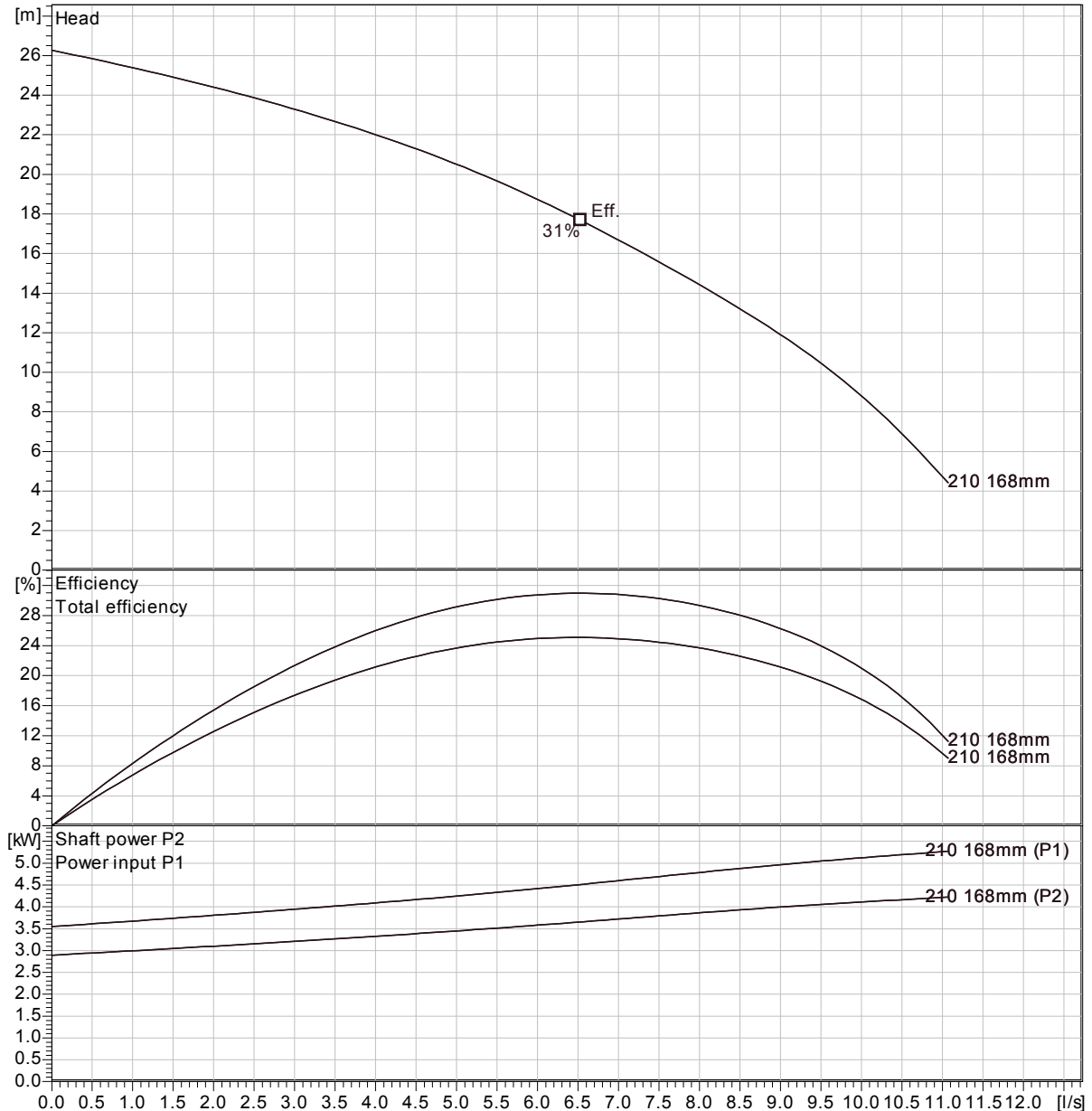
Pump

Outlet width	50 mm
Inlet diameter	85 mm
Impeller diameter	168 mm
Number of blades	6

Motor

Motor #	M3102.170 18-10-2AL-W 4,4KW
Stator variant	
Frequency	50 Hz
Rated voltage	415 V
Number of poles	2
Phases	3~
Rated power	4.4 kW
Rated current	8.2 A
Starting current	54 A
Rated speed	2855 rpm

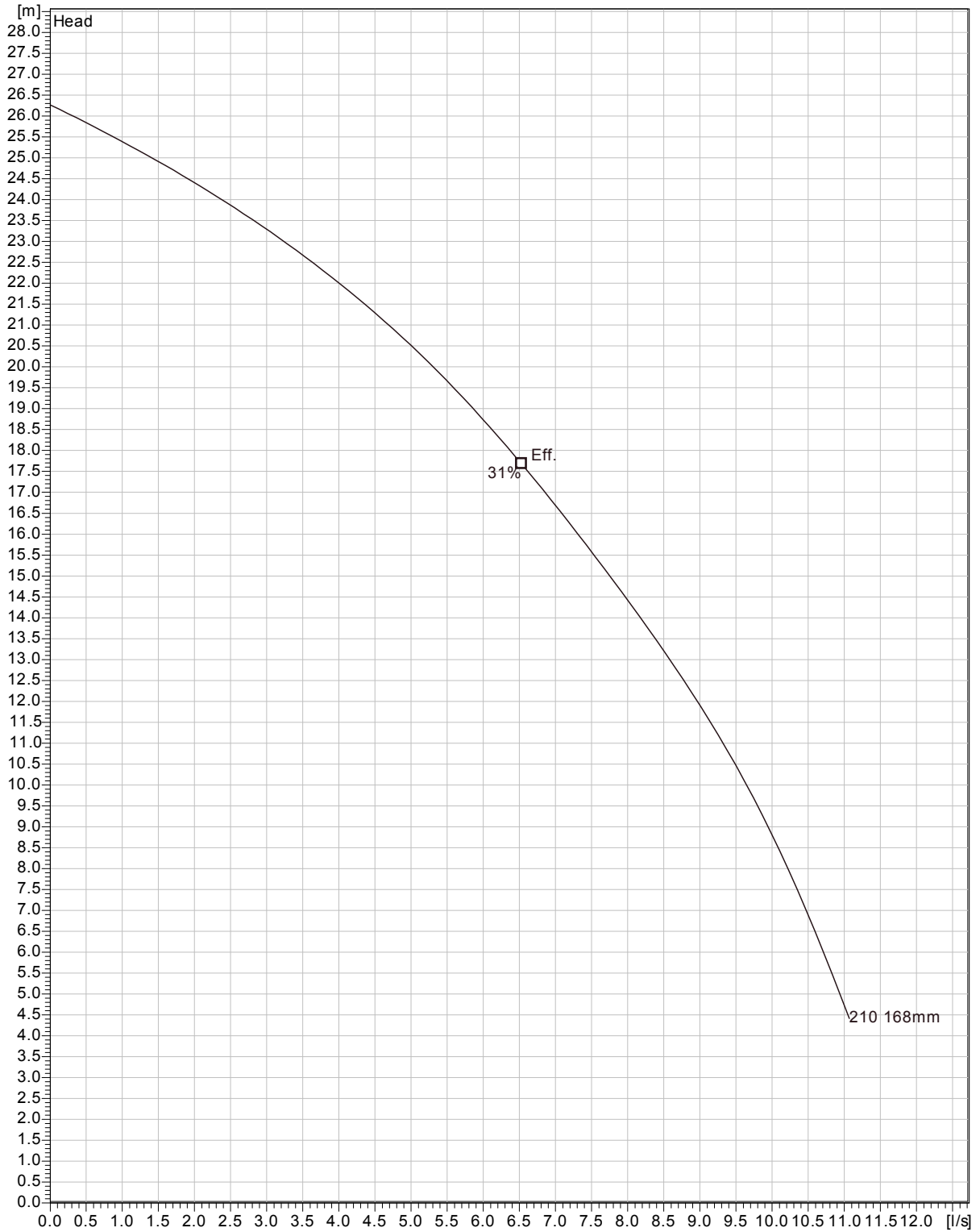
Power factor	
1/1 Load	0.94
3/4 Load	0.92
1/2 Load	0.88
Efficiency	
1/1 Load	79.5 %
3/4 Load	81.0 %
1/2 Load	80.5 %



Curve according to: ISO 9906

Project	Project ID	Created by	Created on 2012-10-25	Last update
---------	------------	------------	---------------------------------	-------------

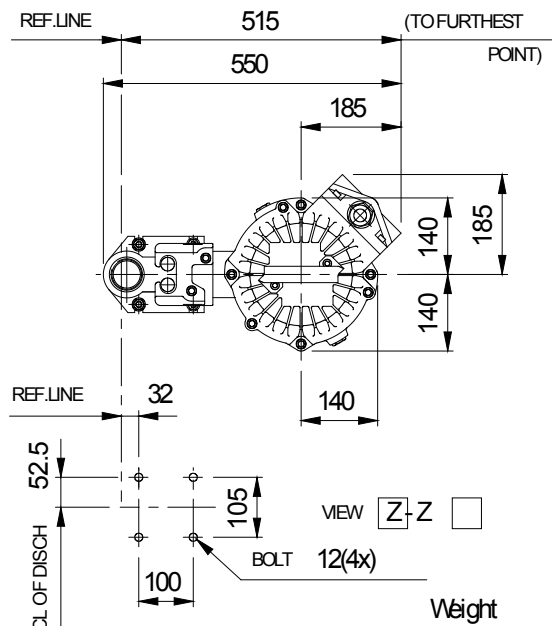
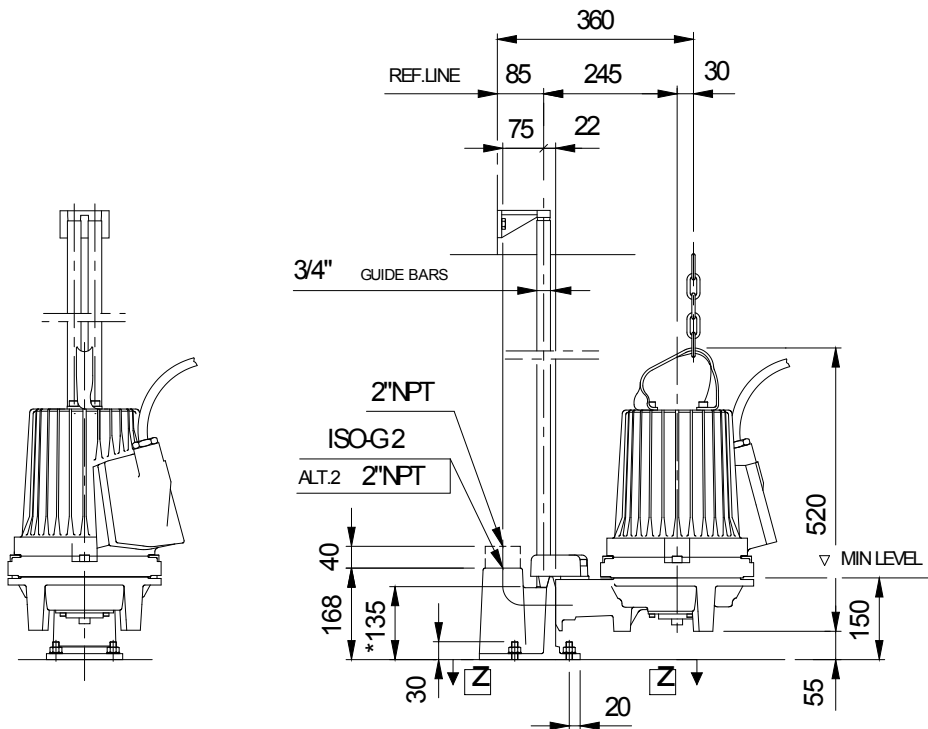
MP 3102 LT 3~ 210
Duty Analysis



Curve according to: ISO 9906

Project	Project ID	Created by	Created on	Last update
			2012-10-25	

MP 3102 LT 3~ 210
Dimensional drawing



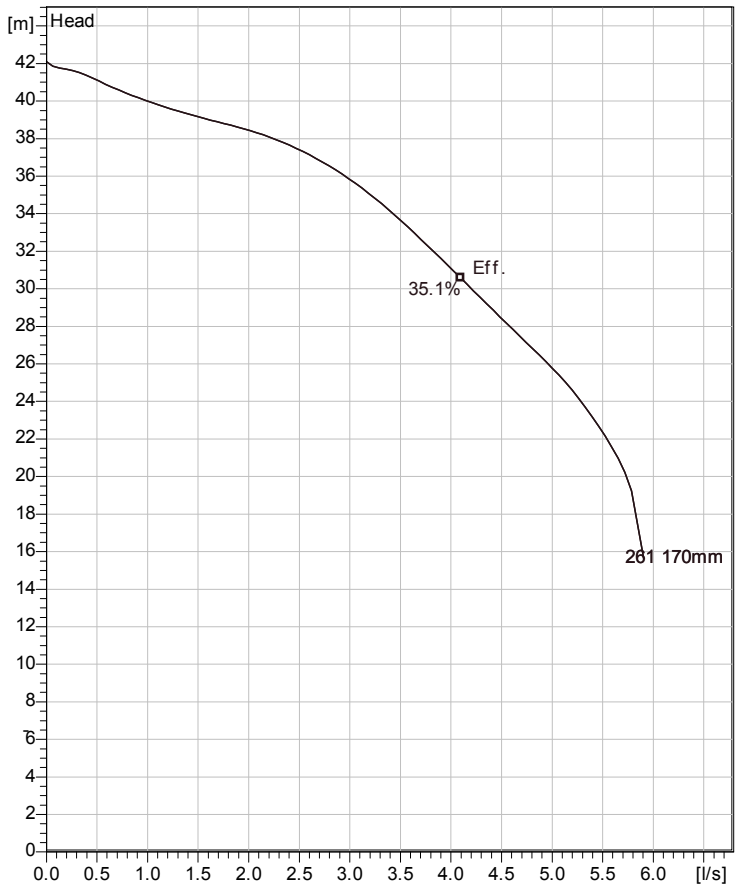
* DIMENSION TO ENDS OF GUIDE BARS

Dimensional dvg
MP3102LT

Project	Project ID	Created by	Created on	Last update
			2012-10-25	

MP 3102 HT 3~ 261

Technical specification



Curve according to: ISO 9906



Note: Picture might not correspond to the current configuration.

General

Semi-open multi-channel impellers with integral grinder cutter in single volute casing for liquids containing solids and fibres.

Impeller

Impeller material	Grey cast iron
Outlet width	40 mm
Inlet diameter	80 mm
Impeller diameter	170 mm
Number of blades	6

Motor

Motor #	M3102.170 18-10-2AL-W 4,4KW
Stator variant	
Frequency	50 Hz
Rated voltage	415 V
Number of poles	2
Phases	3~
Rated power	4.4 kW
Rated current	8.2 A
Starting current	54 A
Rated speed	2855 rpm
Power factor	
1/1 Load	0.94
3/4 Load	0.92
1/2 Load	0.88
Efficiency	
1/1 Load	79.5 %
3/4 Load	81.0 %
1/2 Load	80.5 %

Configuration

Installation: P - Semi permanent, Wet

Project	Project ID	Created by	Created on 2012-10-25	Last update
---------	------------	------------	---------------------------------	-------------

MP 3102 HT 3~ 261

Performance curve

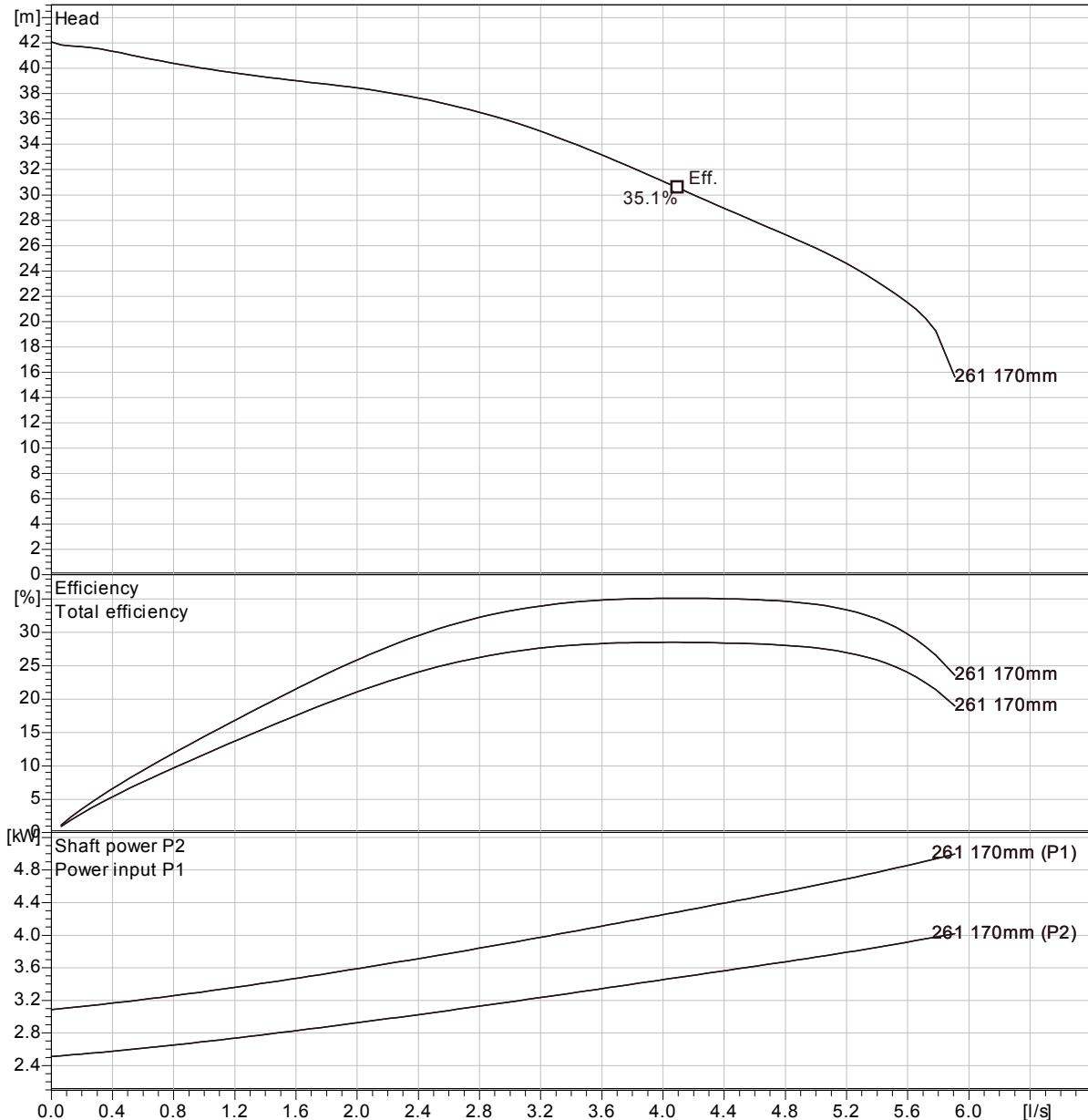
Pump

Outlet width	40 mm
Inlet diameter	80 mm
Impeller diameter	170 mm
Number of blades	6

Motor

Motor #	M3102.170 18-10-2AL-W 4,4KW
Stator variant	
Frequency	50 Hz
Rated voltage	415 V
Number of poles	2
Phases	3~
Rated power	4.4 kW
Rated current	8.2 A
Starting current	54 A
Rated speed	2855 rpm

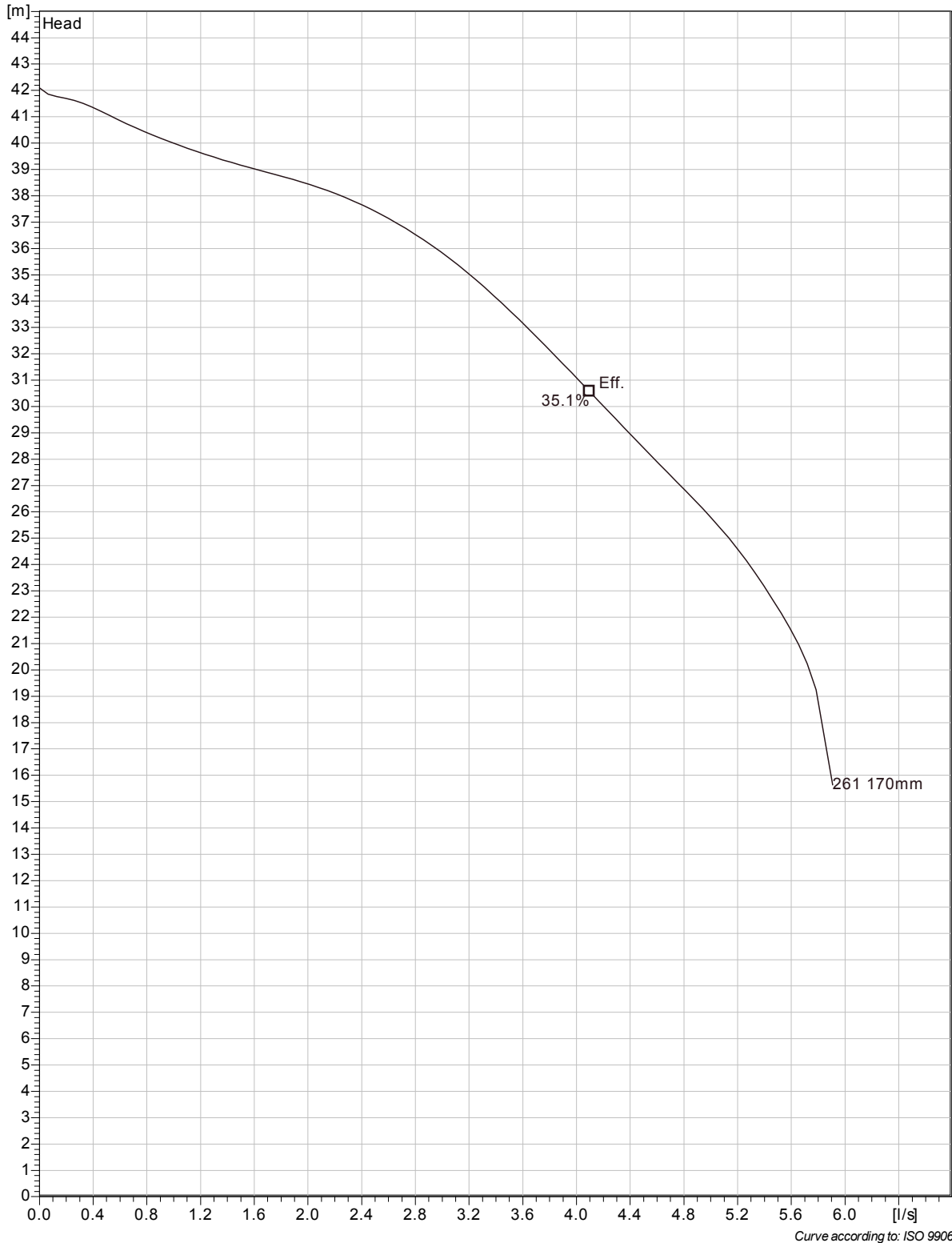
Power factor	
1/1 Load	0.94
3/4 Load	0.92
1/2 Load	0.88
Efficiency	
1/1 Load	79.5 %
3/4 Load	81.0 %
1/2 Load	80.5 %



Curve according to: ISO 9906

Project	Project ID	Created by	Created on 2012-10-25	Last update
---------	------------	------------	---------------------------------	-------------

MP 3102 HT 3~ 261
Duty Analysis



Project	Project ID	Created by	Created on	Last update
			2012-10-25	

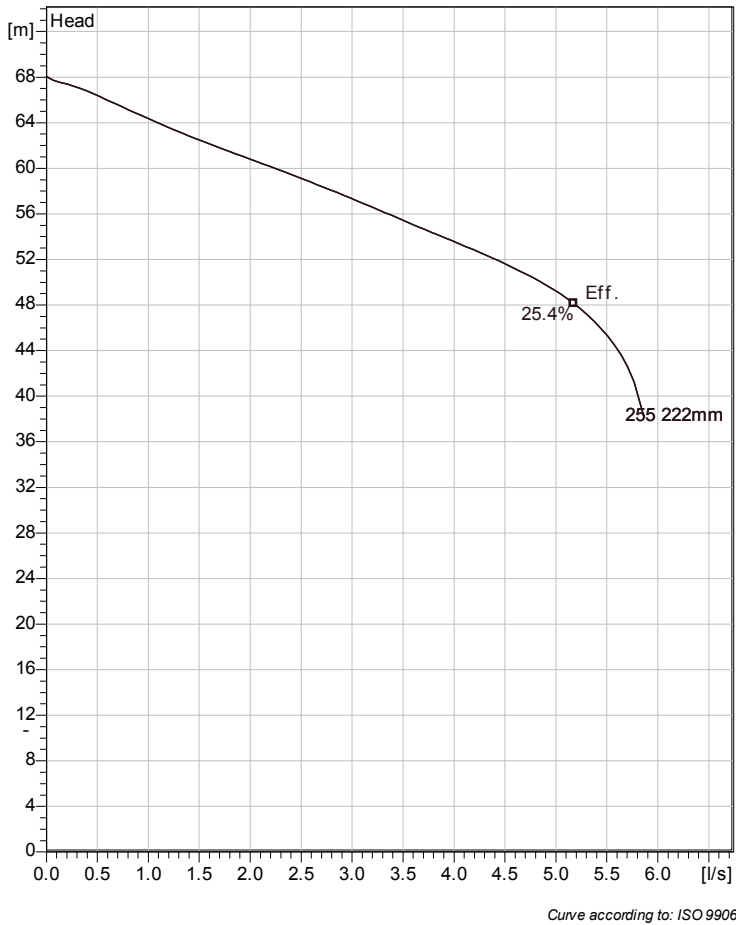
MP 3102 HT 3~ 261
Dimensional drawing



Project	Project ID	Created by	Created on 2012-10-25	Last update
---------	------------	------------	---------------------------------	-------------

MP 3127 HT 3~ 255

Technical specification



Note: Picture might not correspond to the current configuration.

General

Semi-open multi-channel impellers with integral grinder cutter in single volute casing for liquids containing solids and fibres.

Impeller

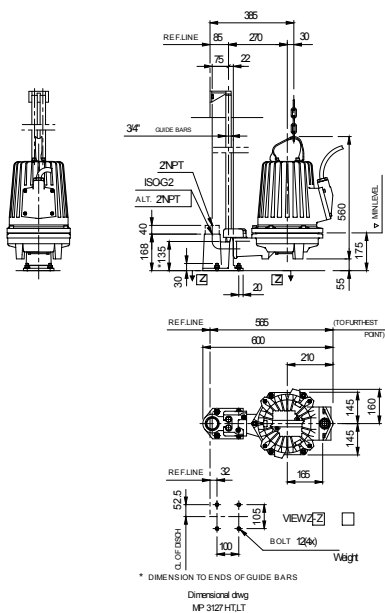
Impeller material	Grey cast iron
Outlet width	50 mm
Inlet diameter	80 mm
Impeller diameter	222 mm
Number of blades	6

Motor

Motor #	M3127.170 21-11-2AL-W 10,9KW
Stator variant	
Frequency	50 Hz
Rated voltage	415 V
Number of poles	2
Phases	3~
Rated power	10.9 kW
Rated current	21 A
Starting current	143 A
Rated speed	2885 rpm
Power factor	
1/1 Load	0.86
3/4 Load	0.82
1/2 Load	0.73
Efficiency	
1/1 Load	83.5 %
3/4 Load	84.5 %
1/2 Load	83.0 %

Configuration

Installation: P - Semi permanent, Wet



Project	Project ID	Created by	Created on 2012-10-25	Last update
---------	------------	------------	---------------------------------	-------------

MP 3127 HT 3~ 255

Performance curve

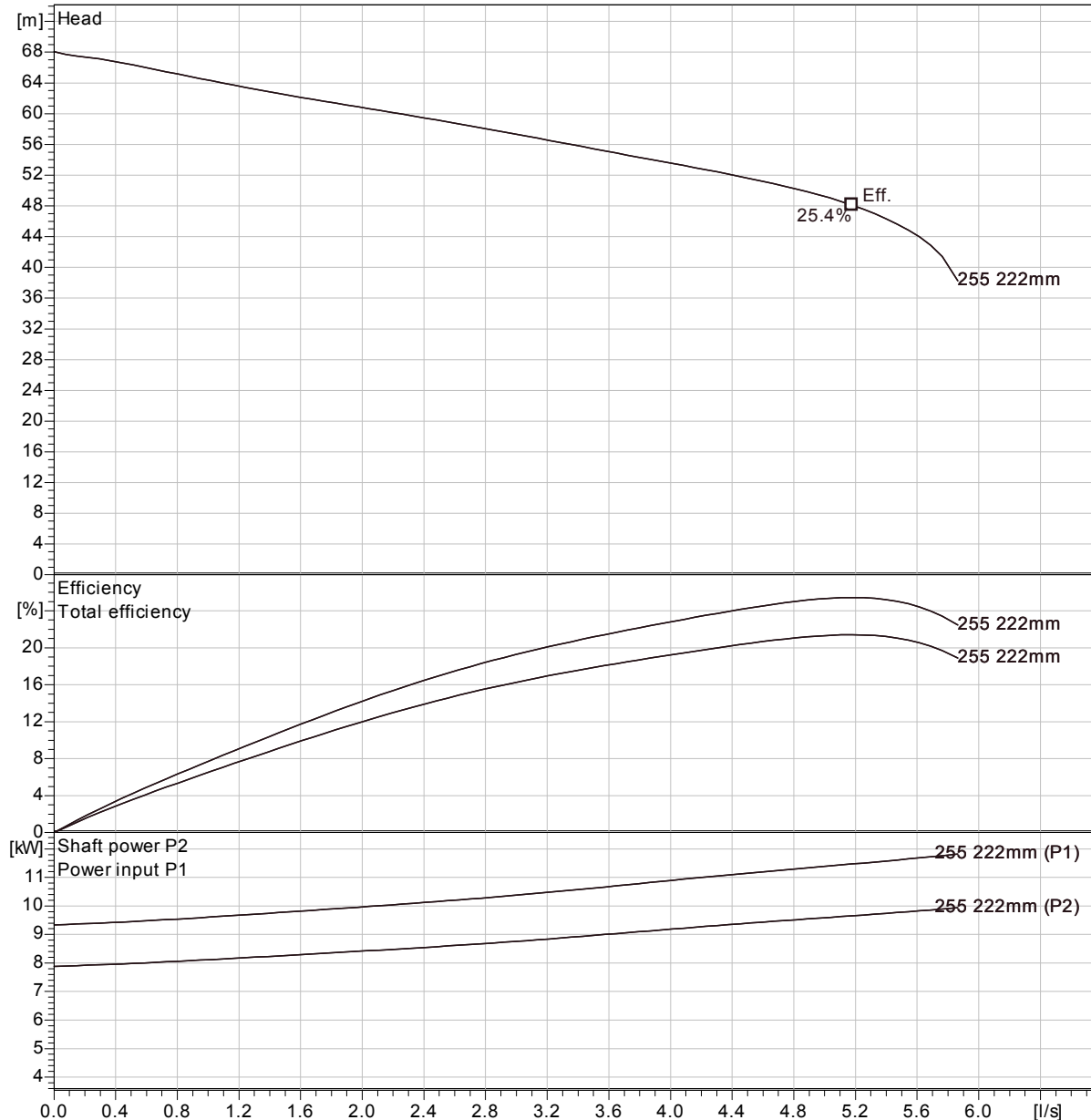
Pump

Outlet width	50 mm
Inlet diameter	80 mm
Impeller diameter	222 mm
Number of blades	6

Motor

Motor #	M3127.170 21-11-2AL-W 10,9KW
Stator variant	
Frequency	50 Hz
Rated voltage	415 V
Number of poles	2
Phases	3~
Rated power	10.9 kW
Rated current	21 A
Starting current	143 A
Rated speed	2885 rpm

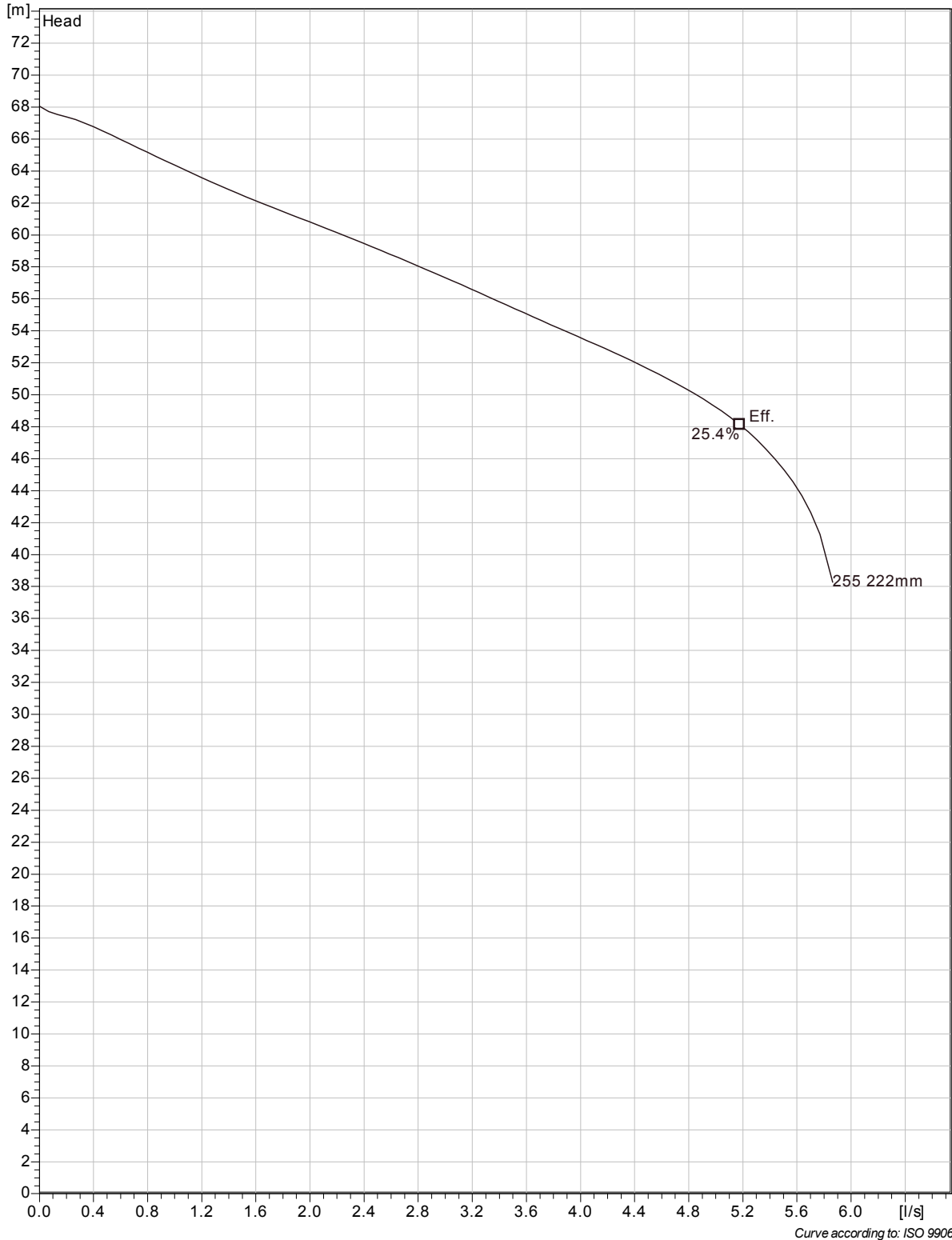
Power factor	
1/1 Load	0.86
3/4 Load	0.82
1/2 Load	0.73
Efficiency	
1/1 Load	83.5 %
3/4 Load	84.5 %
1/2 Load	83.0 %



Curve according to: ISO 9906

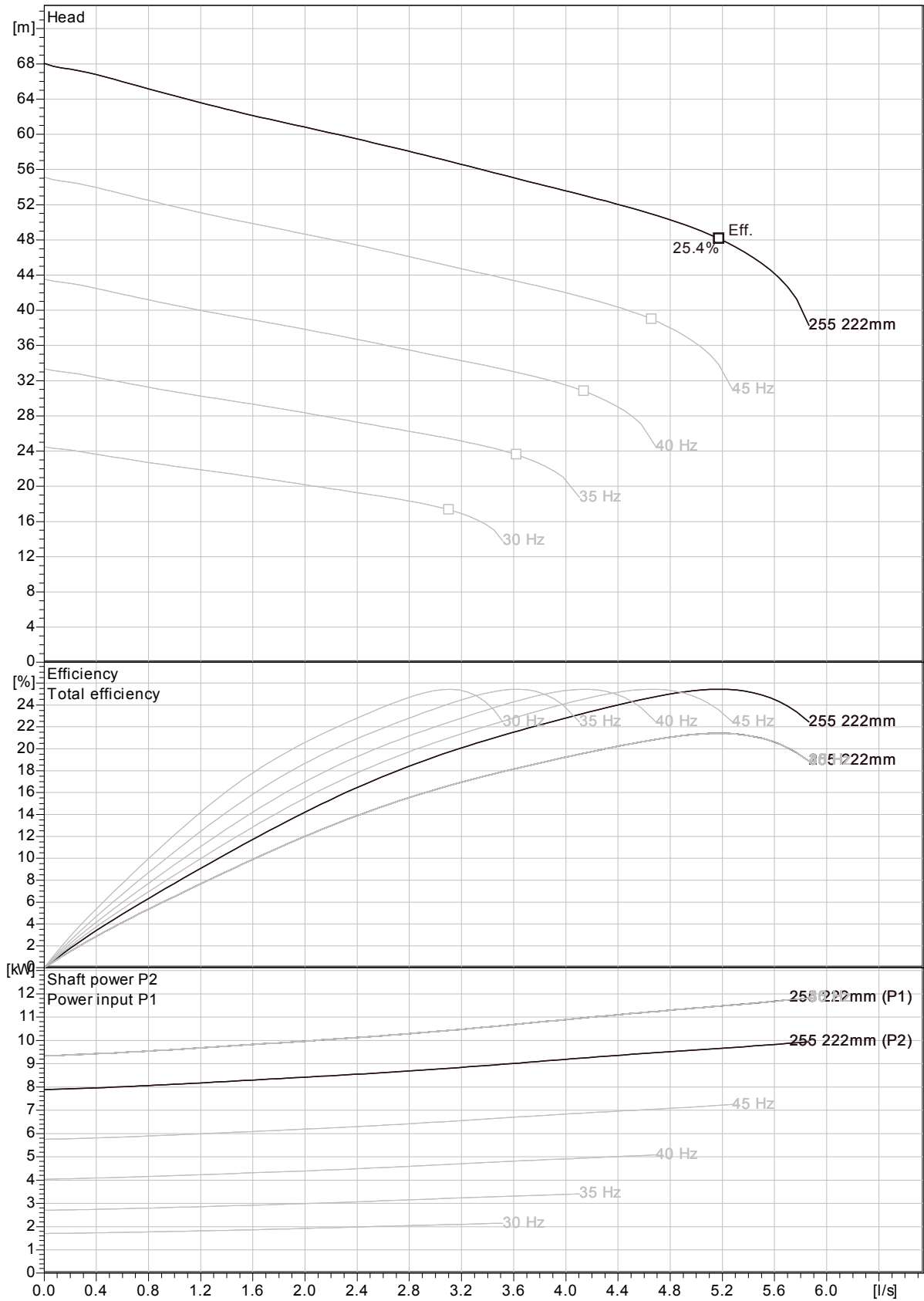
Project	Project ID	Created by	Created on 2012-10-25	Last update
---------	------------	------------	---------------------------------	-------------

MP 3127 HT 3~ 255
Duty Analysis



Project	Project ID	Created by	Created on	Last update
			2012-10-25	

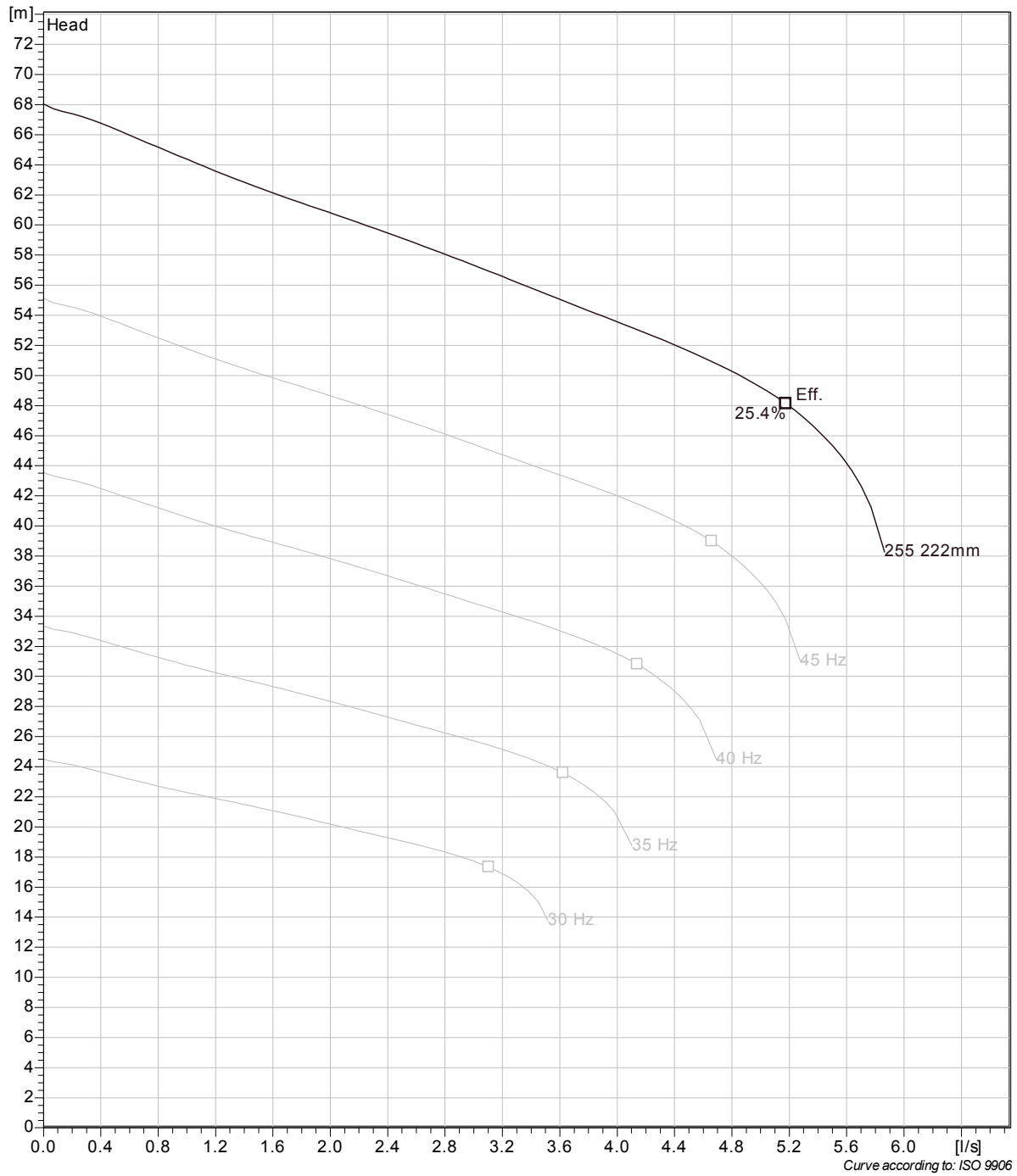
MP 3127 HT 3~ 255
VFD Curve



Curve according to: ISO 9906

Project	Project ID	Created by	Created on	Last update
			2012-10-25	

MP 3127 HT 3~ 255
VFD Analysis



Project	Project ID	Created by	Created on	Last update
			2012-10-25	

MP 3127 LT 3~ 210

Performance curve

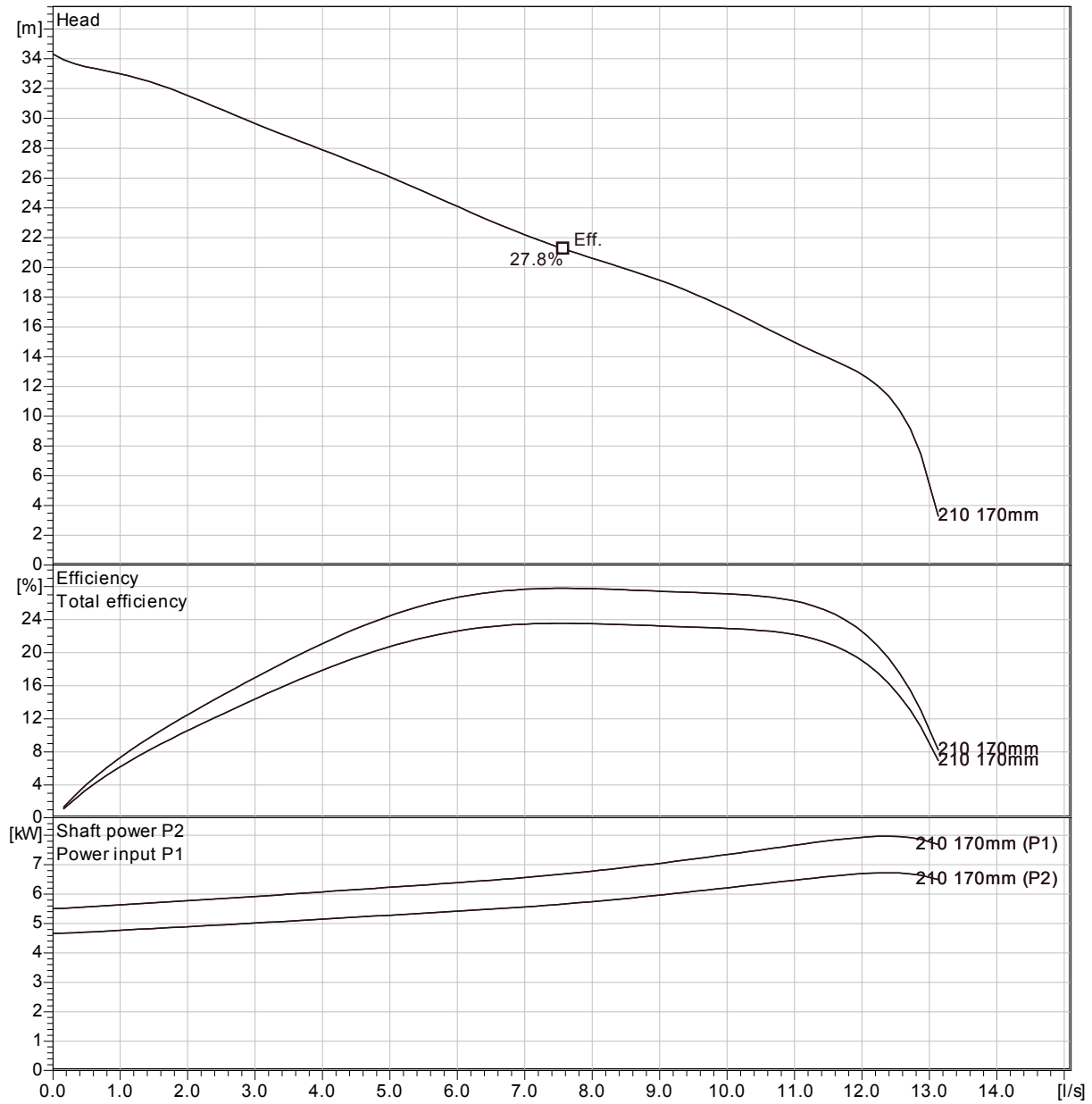
Pump

Outlet width	50 mm
Inlet diameter	85 mm
Impeller diameter	170 mm
Number of blades	6

Motor

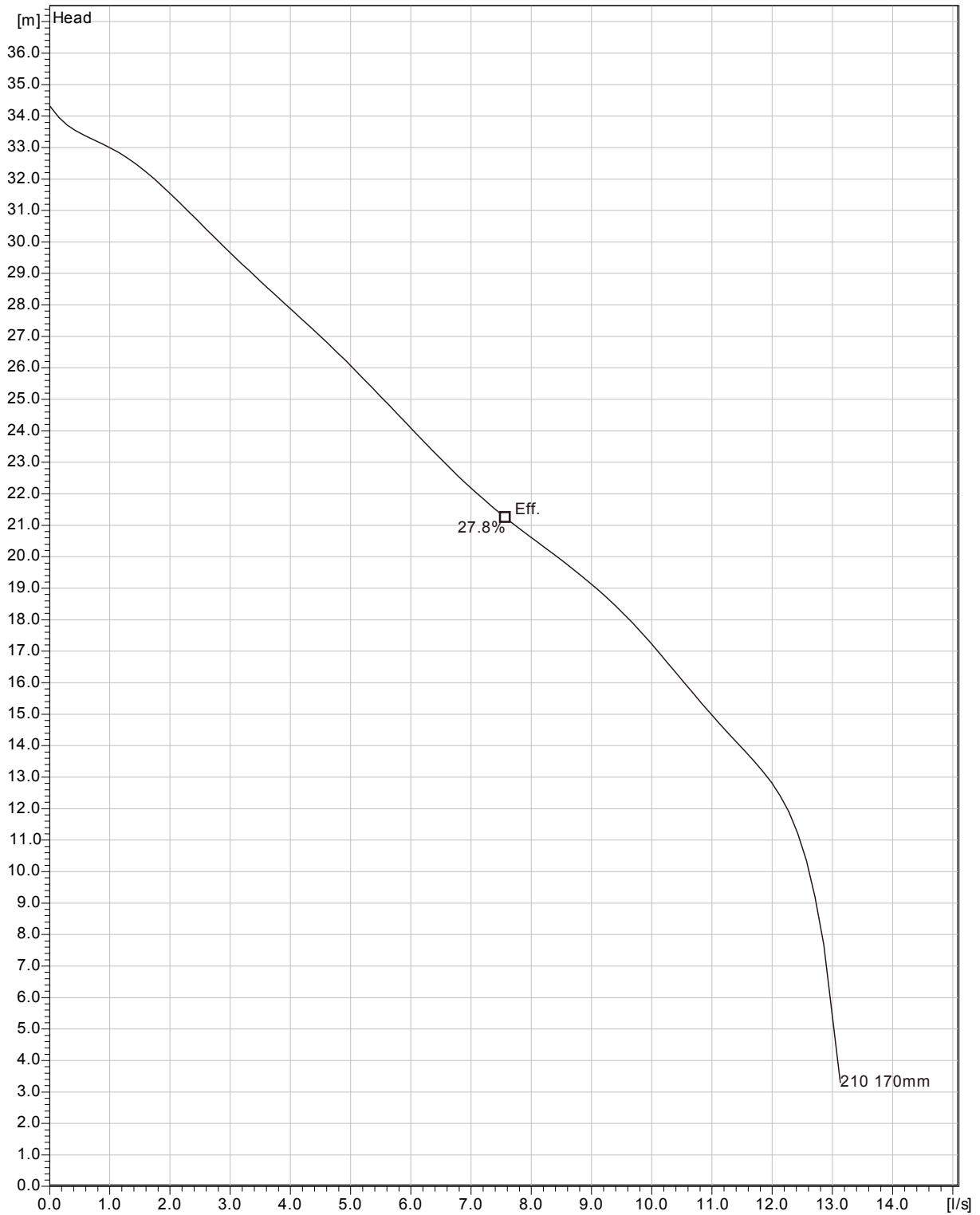
Motor #	M3127.170 21-11-2AL-W 7,4KW
Stator variant	
Frequency	50 Hz
Rated voltage	415 V
Number of poles	2
Phases	3~
Rated power	7.4 kW
Rated current	13 A
Starting current	98 A
Rated speed	2895 rpm

Power factor	
1/1 Load	0.92
3/4 Load	0.90
1/2 Load	0.86
Efficiency	
1/1 Load	83.5 %
3/4 Load	84.5 %
1/2 Load	83.5 %



Project	Project ID	Created by	Created on 2012-10-25	Last update
---------	------------	------------	---------------------------------	-------------

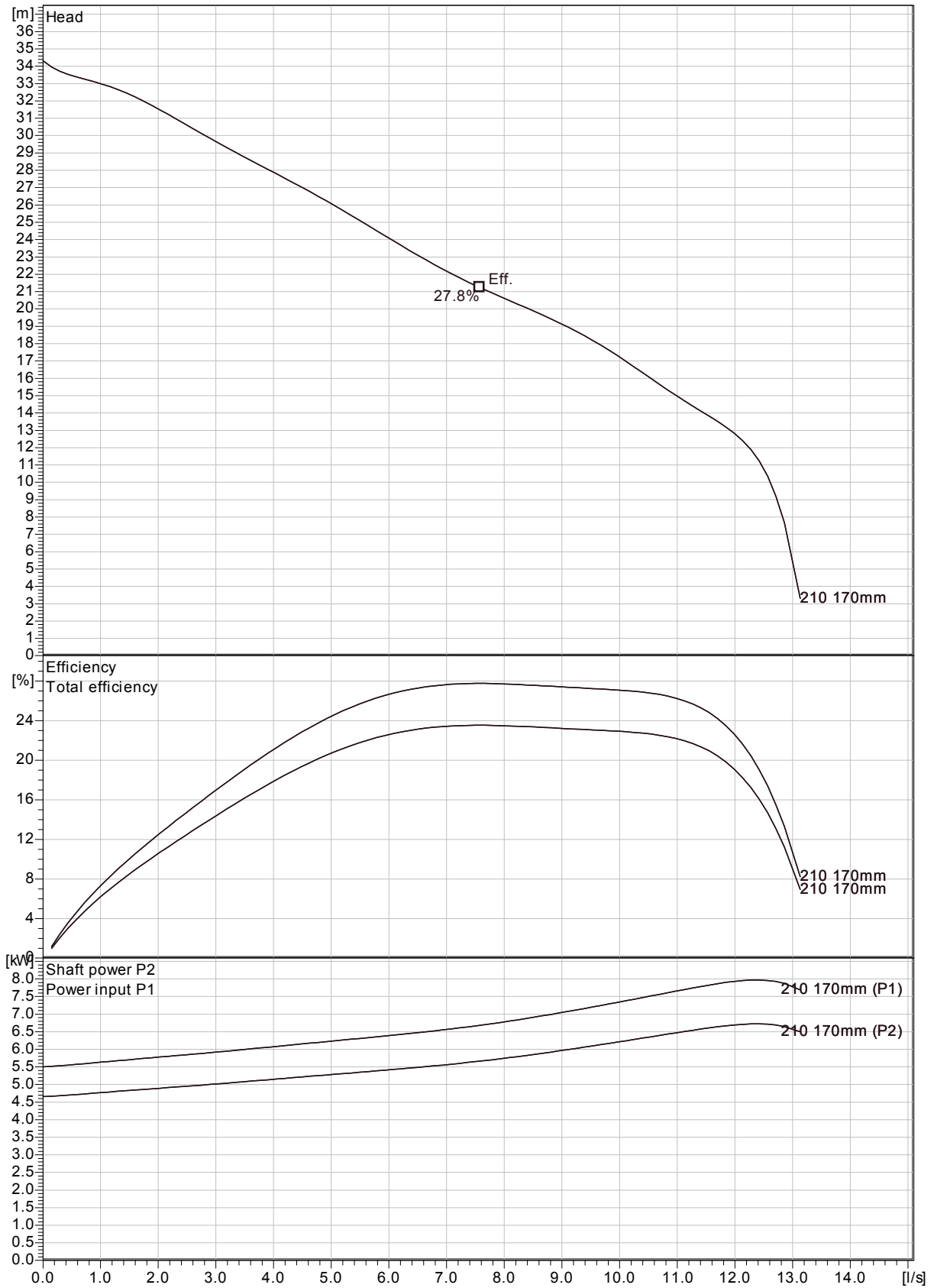
MP 3127 LT 3~ 210
Duty Analysis



Curve according to: ISO 9906

Project	Project ID	Created by	Created on	Last update
			2012-10-25	

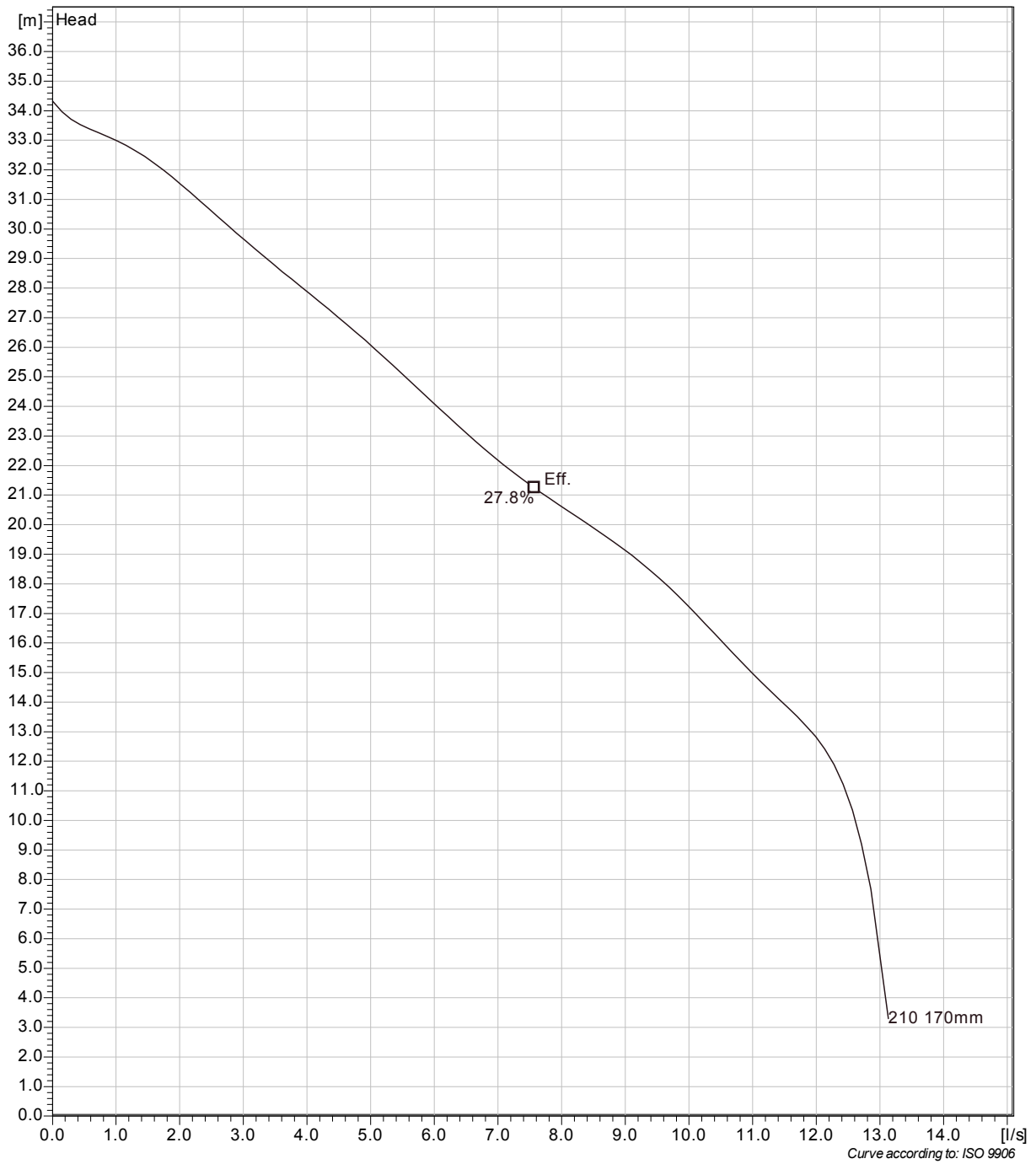
MP 3127 LT 3~ 210
VFD Curve



Curve according to: ISO 9906

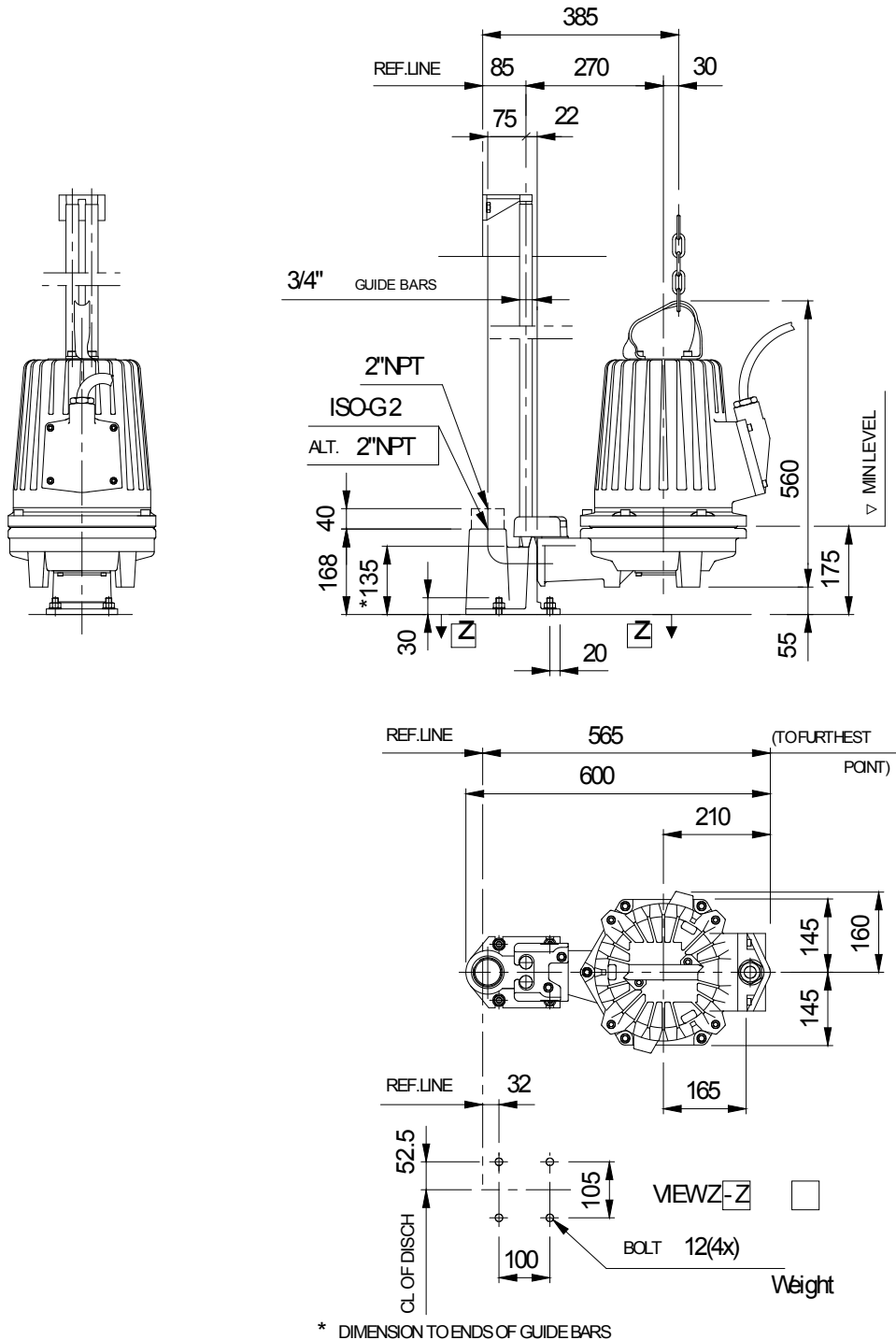
Project	Project ID	Created by	Created on	Last update
			2012-10-25	

MP 3127 LT 3~ 210
VFD Analysis



Project	Project ID	Created by	Created on 2012-10-25	Last update
---------	------------	------------	---------------------------------	-------------

MP 3127 LT 3~ 210
Dimensional drawing

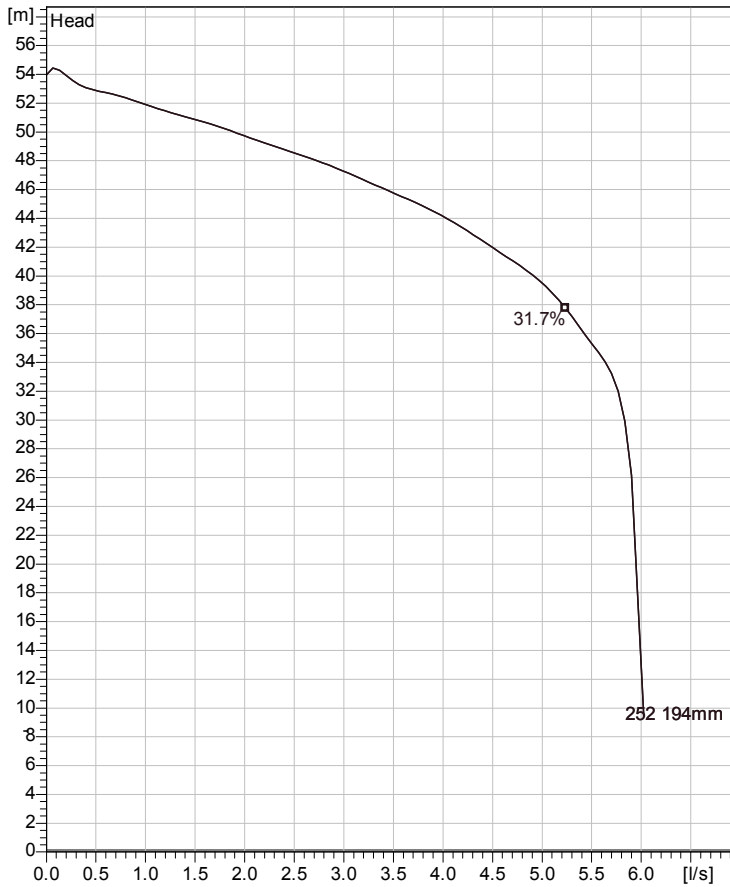


Dimensional dvg
MP3127HT,LT

Project	Project ID	Created by	Created on	Last update
			2012-10-25	

MP 3127 HT 3~ 252

Technical specification



Curve according to: ISO 9906



Note: Picture might not correspond to the current configuration.

General

Semi-open multi-channel impellers with integral grinder cutter in single volute casing for liquids containing solids and fibres.

Impeller

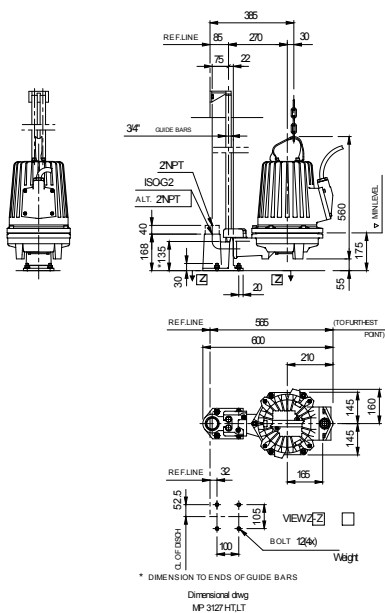
Impeller material	Grey cast iron
Outlet width	50 mm
Inlet diameter	80 mm
Impeller diameter	194 mm
Number of blades	6

Motor

Motor #	M3127.170 21-11-2AL-W 7,4KW
Stator variant	
Frequency	50 Hz
Rated voltage	415 V
Number of poles	2
Phases	3~
Rated power	7.4 kW
Rated current	13 A
Starting current	98 A
Rated speed	2895 rpm
Power factor	
1/1 Load	0.92
3/4 Load	0.90
1/2 Load	0.86
Efficiency	
1/1 Load	83.5 %
3/4 Load	84.5 %
1/2 Load	83.5 %

Configuration

Installation: P - Semi permanent, Wet



Project	Project ID	Created by	Created on 2012-10-25	Last update
---------	------------	------------	---------------------------------	-------------

MP 3127 HT 3~ 252

Performance curve

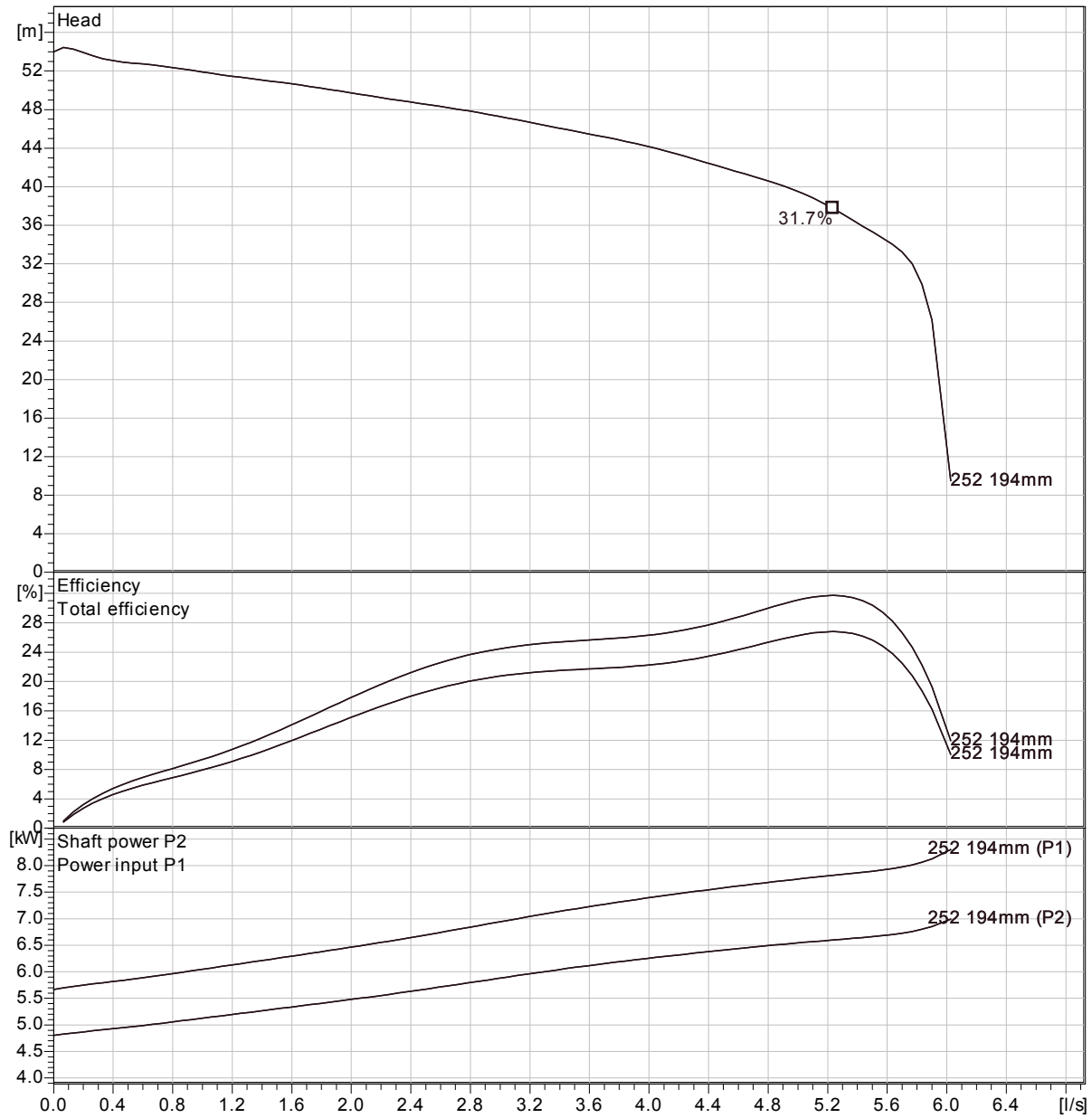
Pump

Outlet width	50 mm
Inlet diameter	80 mm
Impeller diameter	194 mm
Number of blades	6

Motor

Motor #	M3127.170 21-11-2AL-W 7,4KW
Stator variant	
Frequency	50 Hz
Rated voltage	415 V
Number of poles	2
Phases	3~
Rated power	7.4 kW
Rated current	13 A
Starting current	98 A
Rated speed	2895 rpm

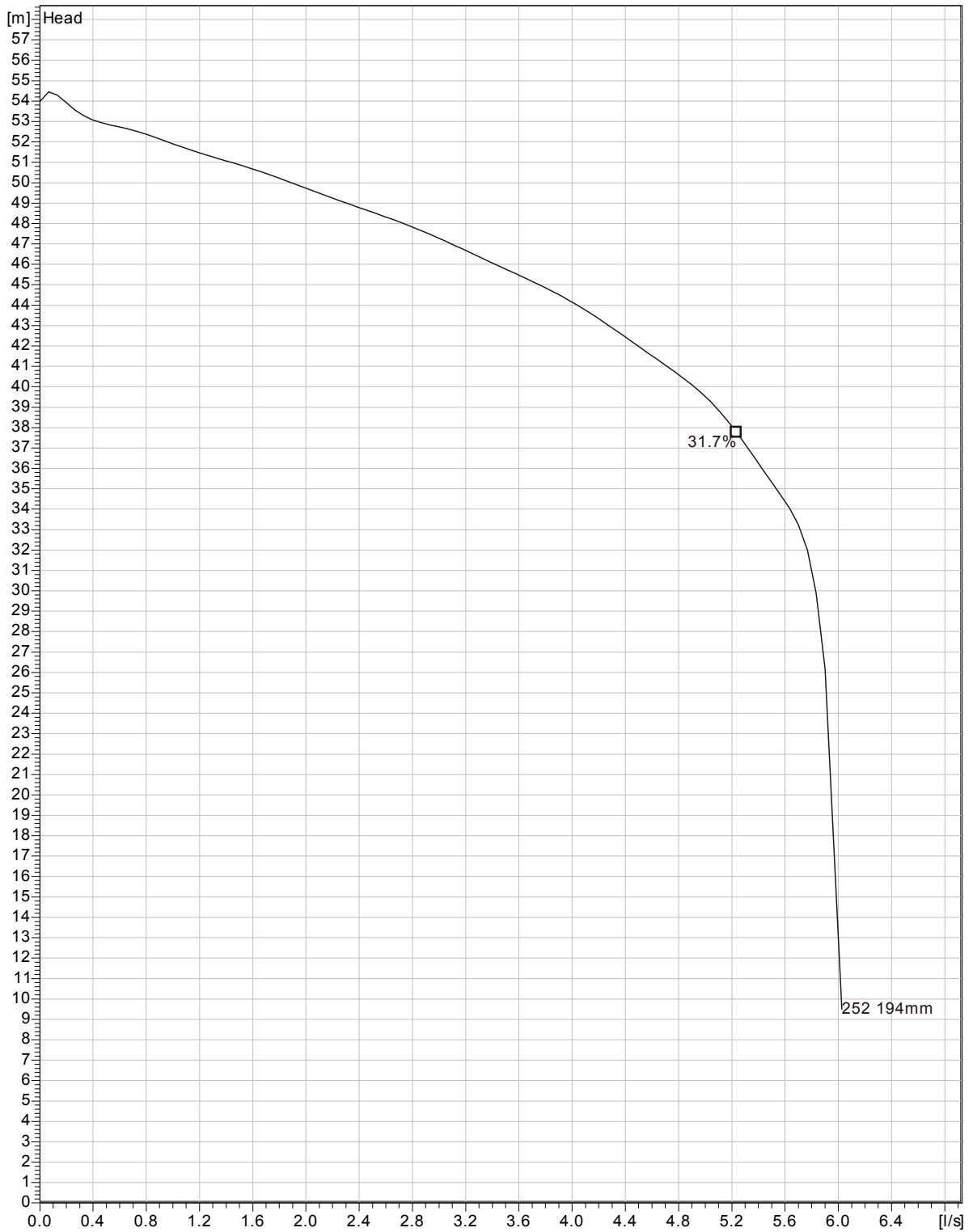
Power factor	
1/1 Load	0.92
3/4 Load	0.90
1/2 Load	0.86
Efficiency	
1/1 Load	83.5 %
3/4 Load	84.5 %
1/2 Load	83.5 %



Curve according to: ISO 9906

Project	Project ID	Created by	Created on 2012-10-25	Last update
---------	------------	------------	---------------------------------	-------------

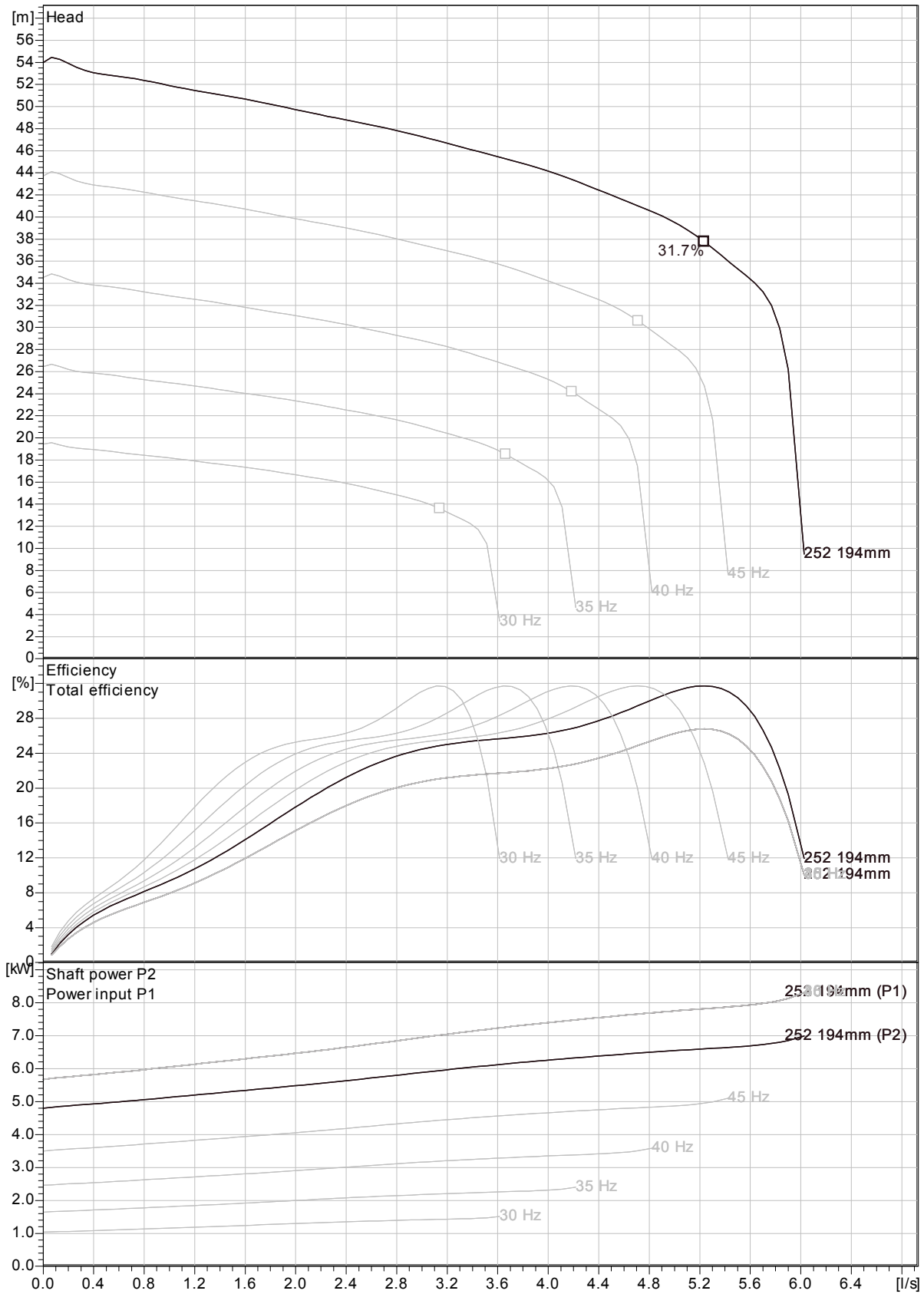
MP 3127 HT 3~ 252
Duty Analysis



Curve according to: ISO 9906

Project	Project ID	Created by	Created on	Last update
			2012-10-25	

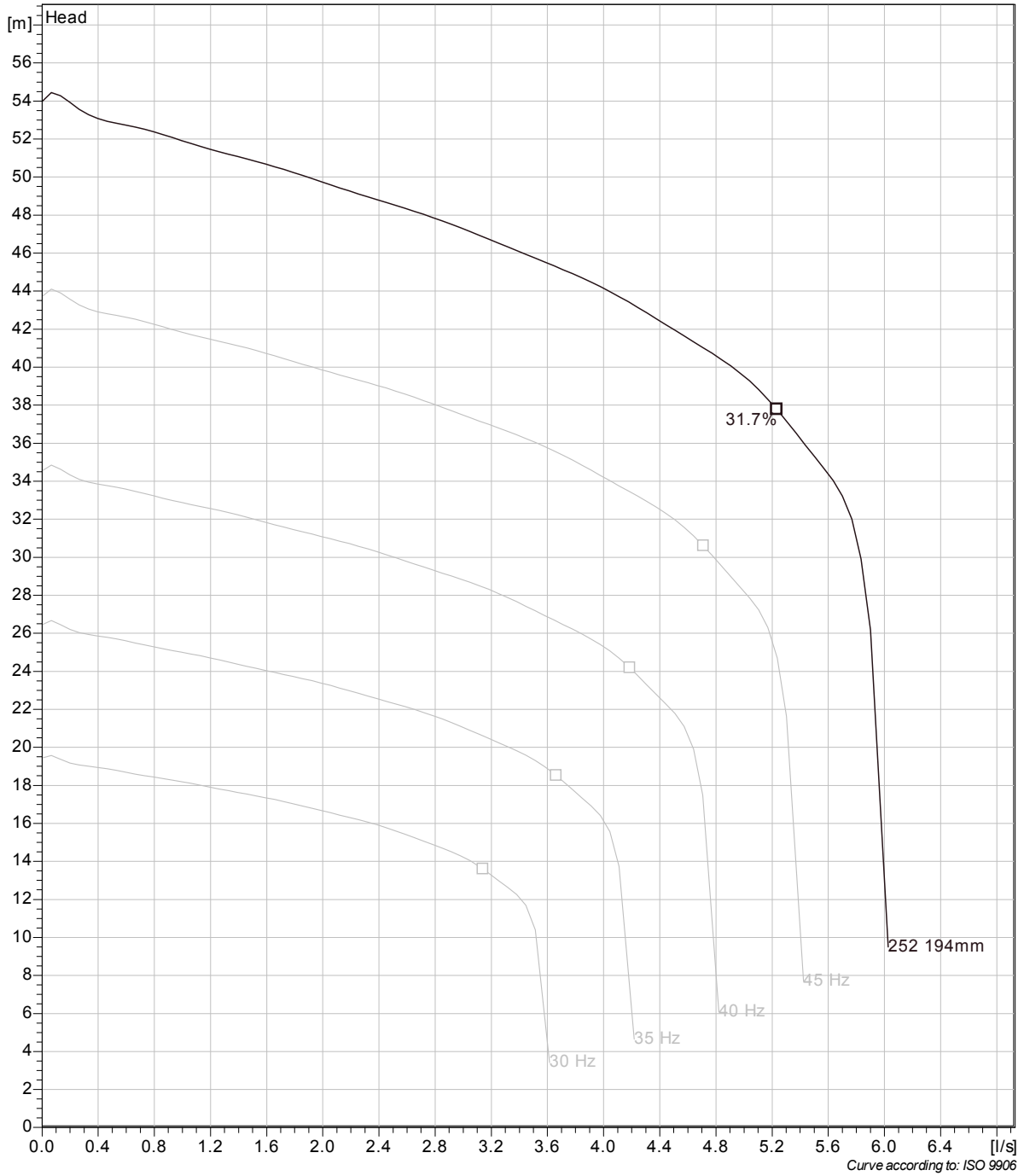
MP 3127 HT 3~ 252
VFD Curve



Curve according to: ISO 9906

Project	Project ID	Created by	Created on	Last update
			2012-10-25	

MP 3127 HT 3~ 252
VFD Analysis



Project	Project ID	Created by	Created on	Last update
			2012-10-25	

