

ITEM	NO. REQD	PART NO.	PART NAME
①	1	P504919	POWER END ASSEMBLY:
②	1	3267276	FLUID CYLINDER:
③	4	1219615	VALVE SEAT:
④	4	3266811	DISC & SPRING ASSEMBLY:
⑤	4	1219610	CAGE:
⑥	2	1241364	CERAMIC CYLINDER:
⑦	2	3267349	CUP: 1 5/8", HSN W/EMERALON COATING
⑧	2	1282557	PACKING HOLDER:
⑨	2	5257986	PACKING WASHER:
⑩	2	1219614	VALVE COVER:
⑪	6	3264075	O-RING: 1 3/16" OD X 1/8" NOM., BUNA-N
⑫	1	1255887	VALVE COVER CLAMP:
⑬	1	1100064	HEX HD CAP SCREW: 1/2-13 X 1 1/2' LG.
⑭	2	1177841	O-RING: 2 1/8" OD X 1/8" NOM., BUNA-N
⑮	2	1279148	UMBRELLA: BLACK
⑯	2	1269388	UMBRELLA WASHER:
⑰	2	1101339	O-RING: 1 1/8" OD X 1/8" NOM., BUNA-N
⑱	1	1177200	CAPLUG: INT. 12
⑲	1	1177201	CAPLUG: INT.
⑳	3	1101262	HEX HD CAP SCREW: 3/8-16 X 5' LG.
㉑	2	A91684	CYLINDER GASKET:
㉒	2	1284516	HEX HD CAP SCREW: 5/16-18 X 1 1/2' LG.
㉓	2	1285170	SEAL RING:
㉔	1	5266228	LIT KIT:



Member of AxFlow Group

0508 4 BBENG
www.brownbros.co.nz

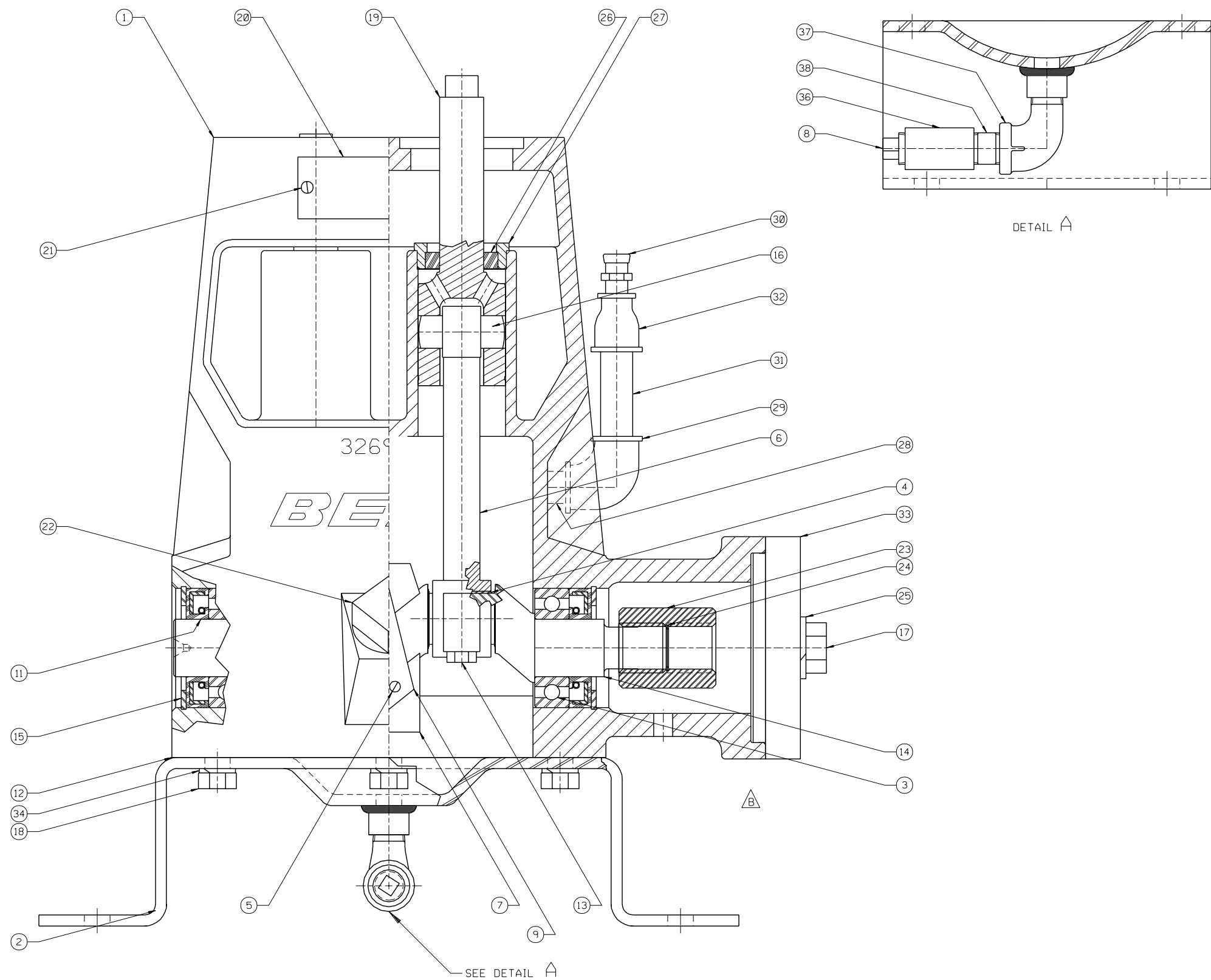
NOTES:

- TORQUE ITEMS 13, 20 & 22 PER ENGINEERING SPEC. AS-22
- TEST AT 500 RPM, 750 PSI
- RETORQUE ALL ITEM 20'S AFTER TEST
- STAMP NAMEPLATE WITH THE FOLLOWING DATA:
 MODEL NO. - A0413 PART NO. - P530414
 MAX RPM - 500 POWER - 3.5 HP/4.0 KW
 FLOW - 9 GPM/34 LPM MAX PRESSURE - 750 PSI/5170 KPA
 SERIAL NO. - _____
- PAINT PER ENGR SPEC CP-20

<small>This drawing is the property of FMC Technologies, and may not be used, reproduced, published, or disclosed to others, without express authorization of FMC Technologies.</small>			
<small>Unless Otherwise Specified: Shows all bars & sharp corners .015 R. All diameters concentric to their ID T.L.R. Angles ±1/2° .XX ±.015 .XXX ±.005 Finish 125 RMS All dimensions are in inches</small>		PUMP ASSEMBLY A0413C, W/1" NPT X 1/2" NPT FLUID END, HSN PISTON, 440 SST DISC VALVE ASSEMBLIES, HYD DRIVE, MOUNTING FEET	
<small>RELEASED FOR PRODUCTION</small> ECN DATE	DRAWN SJK 08-16-05 SCALE: NONE CKD. TDL 08-16-05 SIZE DRAWING NO. APPD. KTR 08-16-05 D DM50000463	<small>COPYRIGHT FMC TECHNOLOGIES</small>	

A	NEW ISSUE	✓	SJK	08-16-05
REV	WAS		ECN	BY DATE

DM50000463



ITEM	NO. REQD	PART NO.	PART NAME
①	1	3269005	POWER FRAME:
②	1	P504969	BACKCOVER: W/MOUNTING FEET
③	2	1177804	BALL BEARING:
④	4	1263739	BEARING INSERT:
⑤	2	320502	HEX HD CAP SCREW: 10 -24 X 3/4" LG
⑥	2	1263906	CONNECTING ROD:
⑦	1	1255285	OIL SLINGER:
⑧	1	1105666	PLUG: 1/4" PIPE
⑨	1	5261980	BOLTING STRIP:
⑩	2	1177576	STOP NUT: 10-24 (NOT SHOWN)
⑪	2	1219669	OIL SEAL:
⑫	1	1219606	GASKET:
⑬	4	1278439	HEX HD CAP SCREW: 1/4-20 X 1" LG
⑭	1	3269009	CRANKSHAFT:
⑮	2	1113528	RETAINER RING: INT 2.06 BORE
⑯	2	1219650	WRIST PIN:
⑰	2	3226393	HEX HD CAP SCREW: 1/2-13 X 1 1/2" LG
⑱	6	1100068	HEX HD CAP SCREW: 3/8-16 X 3/4" LG
⑲	2	1216823	CROSSHEAD:
⑳	1	5277981	NAMEPLATE:
㉑	2	1187413	SELF-TAPPING SCREW: #4 X 3/16" LG
㉒	1	1105060	PLUG: 3/4" PIPE
㉓	1	3269007	COUPLING:
㉔	1	3269008	RETAINER RING: INT .66 BORE
㉕	2	1100245	LOCK WASHER: 1/2"
㉖	2	1283603	SEAL:
㉗	2	3267598	SEAL HOLDER:
㉘	1	P501296	NIPPLE: 1/4"NPT
㉙	1	1105017	STREET ELBOW:1/4" NPT
㉚	1	1177536	LUBE VENT:
㉛	1	1105743	NIPPLE: 1/4" NPT X 2" LG.
㉜	1	3268118	REDUCER: 1/4" NPT X 1/8" NPT
㉝	1	3269015	COVER: FLANGE
㉞	6	1177455	SPRING WASHER:
㉟	1	3269460	PLUG: 1/4" NPT (NS)
㊱	1	P503280	COUPLING: 1/4" NPT
㊲	1	P504930	STREET ELBOW: 1/4" NPT
㊳	1	P504970	NIPPLE: 1/4" NPT, 1.00 LG

NOTES:
 1 TORQUE FASTENER PER FMC SPEC AS-22
 2 PROTECT MOUNT FLANGE FACE AT ALL TIMES
 3 ITEM 35 TO BE INSTALLED AFTER TESTS, BEFORE CLEANING AND PAINTING

REV	DESCRIPTION	BY	DATE
C	REV BOM ITEM 28	5008664	DRG 07-12-01
B	REV GRAPHICS	5009441	BKM 03-17-98
A	NEW ISSUE	1	SJK 06-26-96
REV	WAS	ECN	BY DATE

This drawing is the property of FMC Corporation and may not be used, reproduced, published, or disclosed to others without express authorization FMC Corp.

FMC FMC Corporation
 Fluid Control Division
 2825 W. Washington Box 1377
 Stephenville, Texas 76481

POWER END ASSEMBLY
 F/A04, LH, W/7/8-13T, 16/32, SPLINE,
 2 BOLT HYD. MOTOR MOUNT &
 MOUNTING FEET

RELEASED FOR PRODUCTION
 ECN DATE

DRAWN SJK 02-25-98 SCALE: NONE
 CKD. BKM 02-27-98 SIZE DRAWING NO.
 APPD. RMc 03-09-98 D P504919

P504919