

ITEM	DESCRIPTION	QTY
1	POWER END ASSEMBLY:	1
2	FLUID CYLINDER:	1
3	VALVE CAGE:	4
4	SEAT:	4
5	SPRING AND DISC ASSEMBLY:	4
6	CYLINDER:	2
7	PISTON CUP;	2
8	PISTON HOLDER: A04	2
9	UMBRELLA: F/EO4	2
10	WASHER: UMBRELLA	2
11	CUP WASHER: A04	2
12	VALVE COVER:	2
13	VALVE COVER CLAMP:	1
14	O-RING: UNIFORM #015	2
15	O-RING: UNIFORM #033	2
16	O-RING: UNIFORM #213	6
17	GASKET: VALVE COVER	2
18	RING SEAL: CYLINDER	2
19	CAP SCREW: HEX HEAD, 5/16 X 1.50 LG	2
20	CAP SCREW: HEX HEAD, 1/2 X 1.50 LG	1
21	CAP SCREW: HEX HEAD, 3/8 X 5.00 LG	3
22	NAMEPLATE:	1
23	SELF TAPPING SCREW:	2
24	THREAD PROTECTOR: CAPPLUGS #T-9 (N.S.)	1
25	CAPPLUG: INT 14 (NOT SHOWN)	1

Brown Brothers Engineers Ltd
Member of AxFlow Group
0508 4 BBENG
www.brownbros.co.nz

PRIVATE AND CONFIDENTIAL
THIS DOCUMENT AND ALL THE INFORMATION CONTAINED HEREIN ARE THE CONFIDENTIAL AND EXCLUSIVE PROPERTY OF FMC TECHNOLOGIES AND MAY NOT BE REPRODUCED, USED, DISCLOSED, OR MADE PUBLIC IN ANY MANNER PRIOR TO EXPRESS WRITTEN AUTHORIZATION BY FMC TECHNOLOGIES. THIS DOCUMENT IS ACCEPTED PURSUANT TO AGREEMENT TO THE FOREGOING, AND MUST BE RETURNED UPON DEMAND.
MANUFACTURER AGREES THAT ARTICLES MADE IN ACCORDANCE WITH THIS DOCUMENT SHALL BE CONSIDERED FMC TECHNOLOGIES' DESIGN, AND THAT IDENTICAL ARTICLES OR PARTS THEREOF SHALL NOT BE MANUFACTURED FOR THE USE OR SALE BY MANUFACTURER OR ANY OTHER PERSON OR ENTITY WITHOUT PRIOR EXPRESS WRITTEN AUTHORIZATION BY FMC TECHNOLOGIES.

UNLESS OTHERWISE SPECIFIED
DO NOT SCALE THIS DRAWING
ALL DIMENSIONS ARE IN INCHES (MM)
BREAK SHARP EDGES .015 (1.381) MAXIMUM
INSIDE CORNER RADIUS .030 (1.762) MAXIMUM
THREADS CONFORM TO FEDERAL STANDARD H-28
TAPERED THREADS CONFORM TO API 6A
BOLT HOLES MUST STRADDLE COMMON CENTERLINE
FINISH 250 RMS
ALL DIA'S CONCENTRIC WITHIN .010 (1.254) T.I.R.

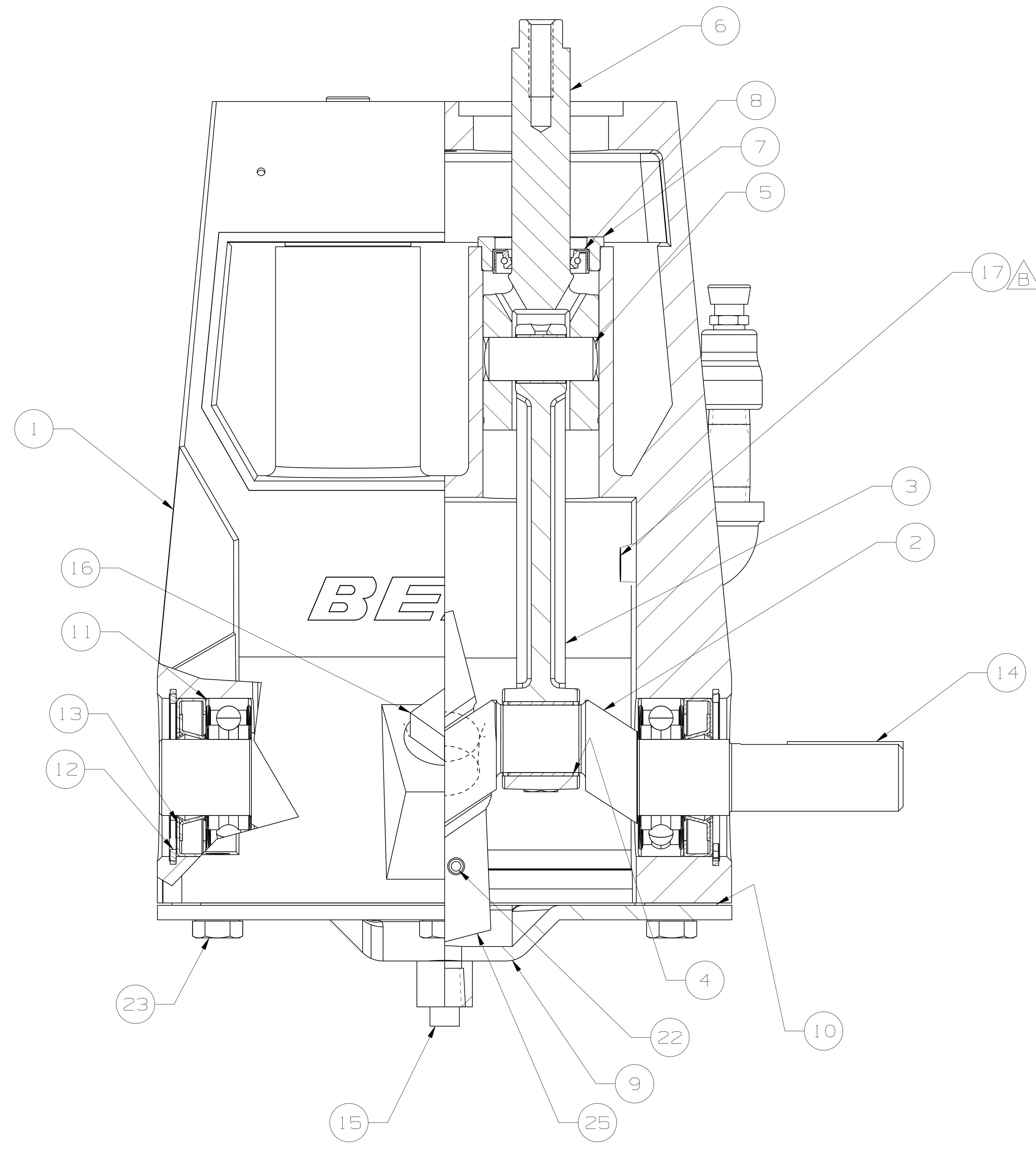
TOLERANCE
.X .. ± .030 (10.762)
.XX .. ± .015 (10.381)
.XXX .. ± .005 (10.127)
ANGLE .. ± 0° 30'

DESCRIPTION: PUMP ASSEMBLY: A0410 RH, W/1 NPT X 1/2 NPT FLUID END, ABRASIVE SERVICE PISTON, DISC VALVE ASSEMBLIES

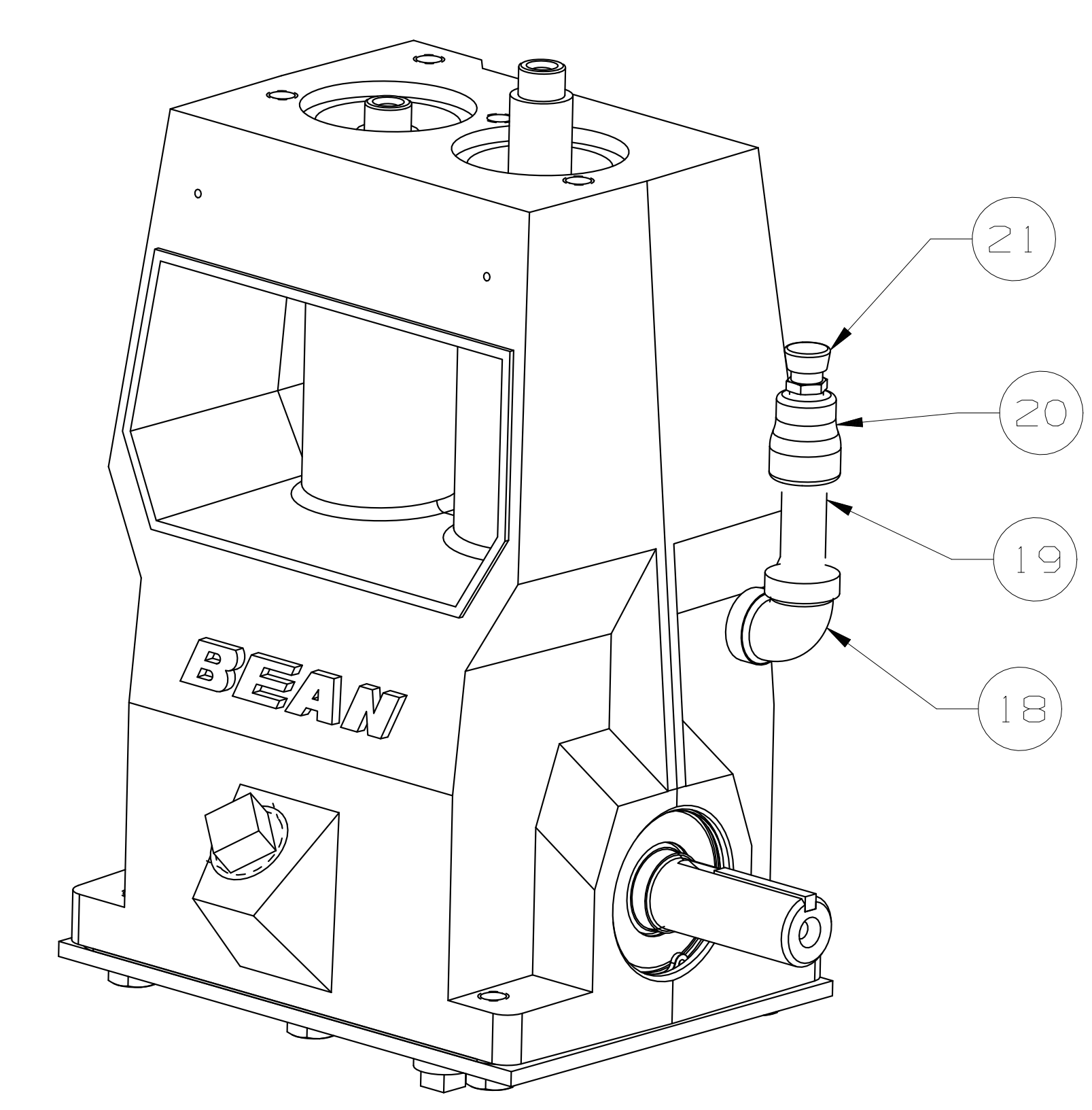
DRAWN BY: WILLIAMS, ANTHONY	DATE: 16-FEB-2011
DRAFTING CHECK: LOUDERMILK, STEVE	DATE: 18-AUG-2011
DESIGN REVIEW: MCCLAIN, MATHEW	DATE: 30-AUG-2011
MANUFACTURING APPROVAL:	DATE:
APPROVED BY: LYON, TIM	DATE: 21-SEP-2011

LATEST EGN NO. 5026111	REV. B
DRAWING NUMBER DUS00012573	SHEET 1/2

© FMC TECHNOLOGIES

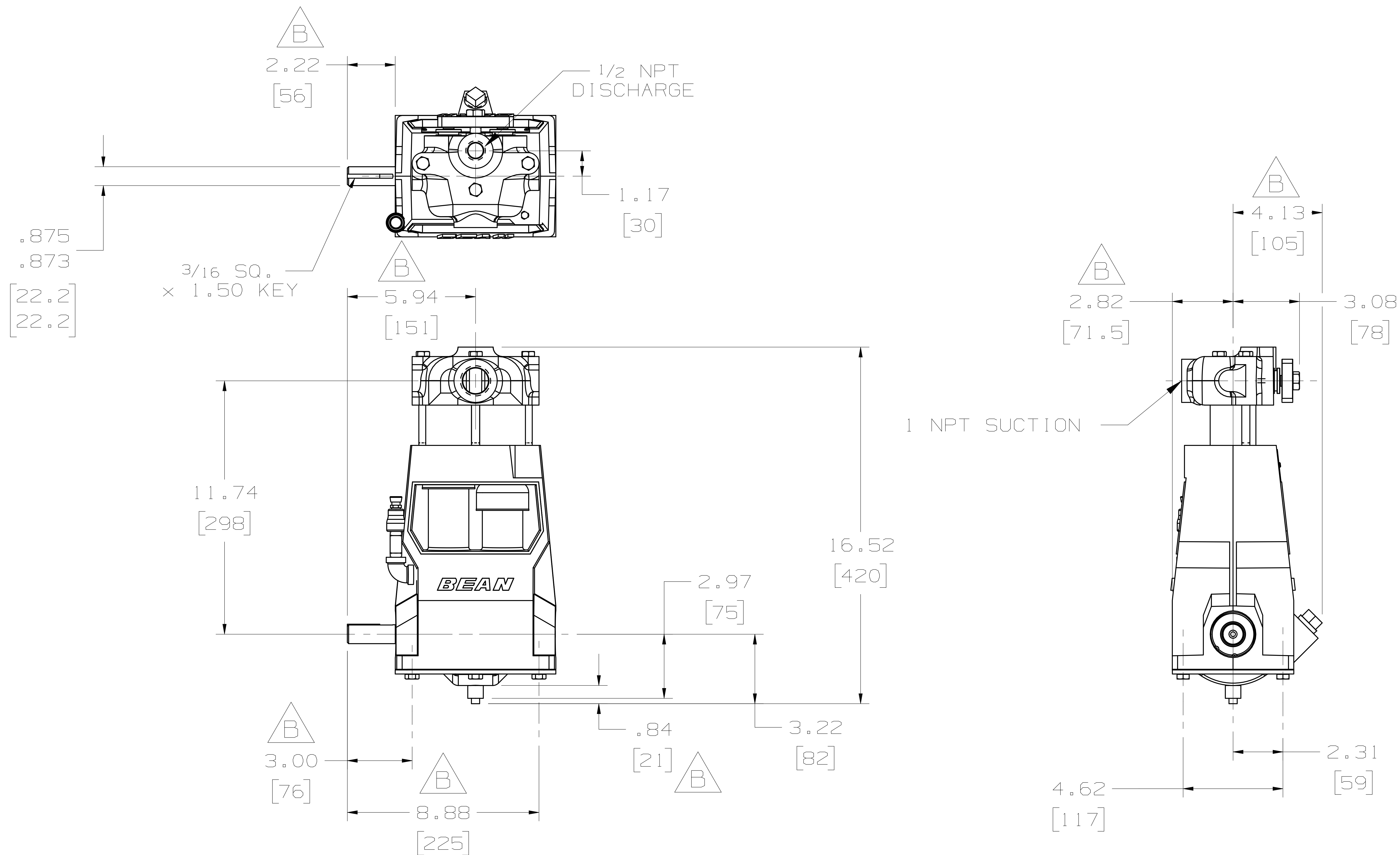


ITEM	DESCRIPTION	QTY
1	POWER FRAME:	1
2	CRANKSHAFT:	1
3	CONNECTING ROD:	2
4	ROD BEARING: HALF SHELL	4
5	WRIST PIN:	2
6	CROSSHEAD:	2
7	SEAL HOLDER:	2
8	SEAL: PONY ROD	2
9	BACK COVER:	1
10	GASKET: BACK COVER	1
11	BALL BEARING:	2
12	RETAINING RING:	2
13	SHAFT SEAL:	2
14	KEY: 3/16 SQ X 1.5 LG	1
15	PIPE PLUG: 1/4 NPT	1
16	PIPE PLUG: SQ HEAD, 3/4 NPT	1
17	NIPPLE: 1/4 SCH 40, 1/4 NPT X 1.00	1
18	ELBOW: 1/4 FEMALE NPT	1
19	NIPPLE: 1/4 S40, 1/4 NPT X 2.00LG	1
20	REDUCER: 1/4 NPT X 1/8 NPT	1
21	LUBE VENT: 1/8 PTF	1
22	CAP SCREW: HEX HD #10 X .75 LG	2
23	CAP SCREW: HEX HEAD, 3/8 X .75 LG	6
24	BOLTING STRIP: NOT SHOWN	1
25	OIL SLINGER: RH	1
26	HEX NUT: #10 NOT SHOWN	2




**Brown Brothers
Engineers Ltd**
 Member of AxFlow Group
 0508 4 BBENG
 www.brownbros.co.nz

PRIVATE AND CONFIDENTIAL THIS DOCUMENT AND ALL THE INFORMATION CONTAINED HEREIN ARE THE CONFIDENTIAL AND EXCLUSIVE PROPERTY OF FMC TECHNOLOGIES AND MAY NOT BE REPRODUCED, USED, DISCLOSED, OR MADE PUBLIC IN ANY MANNER PRIOR TO EXPRESS WRITTEN AUTHORIZATION BY FMC TECHNOLOGIES. THIS DOCUMENT IS ACCEPTED PURSUANT TO AGREEMENT TO THE FOREGOING, AND MUST BE RETURNED UPON DEMAND. MANUFACTURER AGREES THAT ARTICLES MADE IN ACCORDANCE WITH THIS DOCUMENT SHALL BE CONSIDERED FMC TECHNOLOGIES' DESIGN, AND THAT IDENTICAL ARTICLES OR PARTS THEREOF SHALL NOT BE MANUFACTURED FOR THE USE OR SALE BY MANUFACTURER OR ANY OTHER PERSON OR ENTITY WITHOUT PRIOR EXPRESS WRITTEN AUTHORIZATION BY FMC TECHNOLOGIES.	UNLESS OTHERWISE SPECIFIED DO NOT SCALE THIS DRAWING ALL DIMENSIONS ARE IN INCHES (MM) BREAK SHARP EDGES .015 (1.381) MAXIMUM INSIDE CORNER RADIUS .030 (1.762) MAXIMUM THREADS CONFORM TO FEDERAL STANDARD H-28 TAPERED THREADS CONFORM TO API 6A BOLT HOLES MUST STRADDLE COMMON CENTERLINE FINISH 250 RMS ALL DIA'S CONCENTRIC WITHIN .010 (1.254) T.I.R.	TOLERANCE .X ± .030 (10.762) .XX ± .015 (1.381) .XXX ± .005 (1.27) ANGLE ± 0° 30'	DESCRIPTION POWER END ASSEMBLY: A04, W/2.25 LG SHAFT, NO MOUNTING HOLES IN BACKCOVER & LUBE VENT	DRAWN BY: WILLIAMS, ANTHONY	DATE: 16-FEB-2011
				DRAFTING CHECK: LOUDERMILK, STEVE	DATE: 18-AUG-2011
				BESTON REVIEW: MCCLAIN, MATHEW	DATE: 30-AUG-2011
				MANUFACTURING APPROVAL: APPROVED BY: LYON, TIM	DATE: 21-SEP-2011
				LATEST ECN NO. 5026111	REV. B
				DRAWING NUMBER DUS00004948	SHEET 1/1



Brown Brothers Engineers Ltd
 Member of AxFlow Group
 0508 4 BBENG
 www.brownbros.co.nz

PRIVATE AND CONFIDENTIAL

THIS DOCUMENT AND ALL THE INFORMATION CONTAINED HEREIN ARE THE CONFIDENTIAL AND EXCLUSIVE PROPERTY OF FMC TECHNOLOGIES AND MAY NOT BE REPRODUCED, USED, DISCLOSED, OR MADE PUBLIC IN ANY MANNER PRIOR TO EXPRESS WRITTEN AUTHORIZATION BY FMC TECHNOLOGIES. THIS DOCUMENT IS ACCEPTED PURSUANT TO AGREEMENT TO THE FOREGOING, AND MUST BE RETURNED UPON DEMAND.

MANUFACTURER AGREES THAT ARTICLES MADE IN ACCORDANCE WITH THIS DOCUMENT SHALL BE CONSIDERED FMC TECHNOLOGIES' DESIGN, AND THAT IDENTICAL ARTICLES OR PARTS THEREOF SHALL NOT BE MANUFACTURED FOR THE USE OR SALE BY MANUFACTURER OR ANY OTHER PERSON OR ENTITY WITHOUT PRIOR EXPRESS WRITTEN AUTHORIZATION BY FMC TECHNOLOGIES.

ENGINEERING DIMENSIONAL OUTLINE

DESCRIPTION
 PUMP ASSEMBLY; A0410 RH, W/1 NPT X 1/2 NPT FLUID END, ABRASIVE SERVICE PISTON, DISC VALVE ASSEMBLIES

DRAWN BY: WILLIAMS, ANTHONY	DATE: 16-FEB-2011
DRAFTING CHECK: LOUDERMILK, STEVE	DATE: 18-AUG-2011
DESIGN REVIEW: MCCLAIN, MATHEW	DATE: 30-AUG-2011
MANUFACTURING APPROVAL:	DATE:
APPROVED BY: LYON, TIM	DATE: 21-SEP-2011

FMC Technologies

LATEST ECN NO. 5026111	REV. B
DRAWING NUMBER DU500012573	SHEET 2/2

COPYRIGHT FMC TECHNOLOGIES