

RESINS



Resins are high viscosity liquids with potentially shear sensitive (thinning) components, and made up of solvents, waxes, surfactants, and semi-solid resin particles all with various chemical compatibility concerns. These resins can be used in polyurethanes, epoxies and other adhesives. In some cases, resins contain pigments that bring with them abrasive wear concerns.

RESIN APPLICATIONS:

- Epoxy Resins
- Phenolic Resins
- Acrylic Resin

VIKING IN THE PROCESS:

While only a few resin applications are listed above, Viking pumps are used in wide variety of resin handling applications. In most cases Viking pumps will be used for transfer and blending applications. Metering applications are also common. Pay close attention to run speed and operating temperature, as many resins are thermosetting. As such, often times abrasive resistant sealing options should also be considered.

SUGGESTED PUMPS:

1124A SERIES™



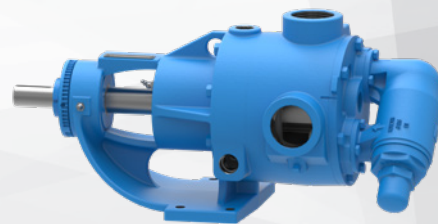
- Cast Iron
- Abrasive resistant sealing option
- Low shear
- Capacities to 400 GPM

4624B SERIES™



- Cast Iron
- Sealing options available
- Hardened materials standard
- Capacities to 180 GPM

4724 SERIES™



- 316 Stainless Steel
- Sealing options available
- Hardened material options
- Capacities to 110 GPM



0508 4 BBENG
www.brownbros.co.nz

VIKING PUMP®

© 07/2020 Viking Pump, Inc. All rights reserved.