

PITCH



The liquid that remains after the distillation of coal tar or refining of petroleum. It is used in paints, roofing and paving materials. It is also used in the production of graphite anodes for electric arc furnaces used in steel production (shown) and carbon anodes used in electrolytic aluminum smelters.

PITCH APPLICATIONS:

- Production of coal tar at coke plants
- Distillation of pitch and other coal chemicals from coal tar
- Production of petroleum pitch at oil refineries
- Production of carbon and graphite anodes

VIKING IN THE PROCESS:

Pitch is one of the most viscous liquids known and Viking is the pump of choice for processing, transfer and metering applications. Normally jacketed heads are used instead of relief valve heads due to the viscosity. Pitch can also be highly abrasive, requiring hardened construction to extend pump life. While the cast iron pump models shown are common in industrial applications, Viking offers steel API676-compliant models for petroleum refineries.

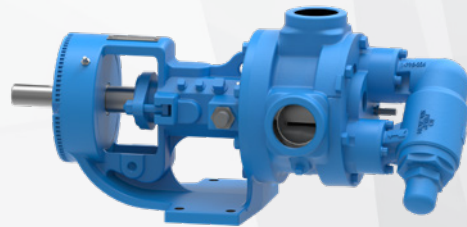
SUGGESTED PUMPS:

224A SERIES™



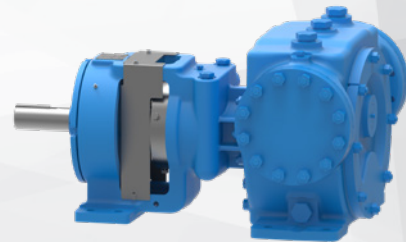
- Cast Iron
- Jacketed for steam/oil heating prior to pump startup
- Hardened material options
- Capacities to 500 GPM

124E SERIES™



- Cast Iron
- Electric heating prior to pump startup
- Hardened material options
- Capacities to 500 GPM

4323AX SERIES™



- Steel
- Fully compliant to API 676 Standard
- Accepts fully compliant API 682 mechanical seals
- Capacities to 1,600 GPM



0508 4 BBENG
www.brownbros.co.nz

VIKING PUMP®

© 08/2020 Viking Pump, Inc. All rights reserved.