

HOT MELT



Hot Melt adhesives are thermoplastic polymers that soften (become less viscous) when heated.

HOT MELT ADHESIVE APPLICATIONS:

- Cardboard box construction
- Product joining
- Assembly (e.g. filters, foams, electronics)

VIKING IN THE PROCESS:

Viking Pumps are used to manufacture hot melt adhesives, including making the component polymers such as ethylene-vinyl acetate (EVA), polyolefins, polyamides and polyesters, styrene block copolymers, polyethylene, and ethylene-methyl acrylate (EMA). To apply hot melt in joining or assembly operations, Viking pumps are used to transfer molten adhesive from a tank or reservoir to a dispensing unit. Also, used in equipment that melts adhesive and transfers the adhesive to a manifold area. The equipment adjusts pump speed to match the speed of the process, such as a cardboard converting machine.



0508 4 BBENG

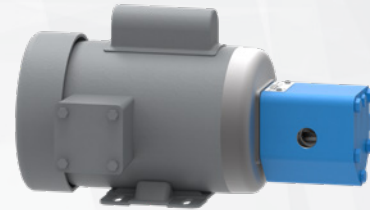
www.brownbros.co.nz

VIKING PUMP®

© 04/2020 Viking Pump, Inc. All rights reserved.

SUGGESTED PUMPS:

SG



- Cast Iron
- Compact installation
- Capacities to 190 GPM

224A SERIES™



- Cast Iron
- Jacketed for steam/oil heating prior to pump startup
- Capacities to 500 GPM

4224A SERIES™



- Cast Iron
- Jacketed for steam/oil heating prior to pump startup
- Mechanical seal options
- Capacities to 500 GPM