

# GLYCEROL / GLYCERINE



This chemical is typically produced in the same process as soaps and surfactants. It is used in a wide variety of products ranging from food and beverage to personal care and disinfectants.

## GLYCEROL / GLYCERINE APPLICATIONS:

Processing glycerol from edible oils or tallow:

- Saponification at surfactant plants
- Transesterification at biodiesel plants

Manufacturing products from glycerol:

- Hand sanitizers and skin care products
- Soaps
- Health & beauty aids

## VIKING IN THE PROCESS:

The relatively high viscosity of glycerol (1,500 cPs at 20°C) requires the use of positive displacement pumping technology like Viking, both for processing glycerol and blending it with additional materials to make other products. For blending applications, because flow is proportional to speed, the flow rate can be accurately controlled for filling at maximum speed initially, then slowed down as it approaches the desired mass or volume to avoid overfilling. In continuous systems, Viking pumps continuously meter liquids into a common manifold with in-line mixing, which is enabled by the fact that Viking flow rate is virtually constant regardless of changes in backpressure, unlike most other pumps. Even small streams under 0.5 GPM can be accurately metered with Viking external gear pumps.

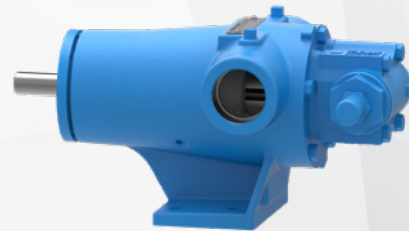
## SUGGESTED PUMPS:

### 4124A SERIES™



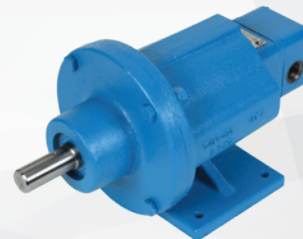
- Cast Iron
- Cartridge lipseal sealing options
- Hardened material options
- Capacities to 500 GPM

### 4195 SERIES™



- Cast Iron
- Pressures up to 250 PSI
- Capacities to 580 GPM

### SG SERIES™



- Cast Iron
- Sealless mag drive design
- Higher pressure capability
- Capacities to 190 GPM



Brown Brothers  
Engineers Ltd

**VIKING PUMP®**

© 05/2020 Viking Pump, Inc. All rights reserved.

0508 4 BBENG  
[www.brownbros.co.nz](http://www.brownbros.co.nz)