

EDIBLE OILS



The processing of edible oils has been a major application for Viking pumps since the company was founded in 1911, since they can handle a wide range of viscosities and temperatures.

TYPES OF EDIBLE OILS:

- Olive
- Pumpkin Seed
- Peanut
- Palm
- Corn
- Grape Seed
- Soybean
- Sunflower
- Sesame
- Canola
- Safflower
- Rice Bran

It could also include a blend of these oils, which is typically referred to as vegetable oil.

VIKING IN THE PROCESS:

Regardless of the type of oilseed or the extraction process used (expeller press or solvent), Viking pumps are used to transport oil through the refining processes, which may include degumming, neutralization, bleaching and deodorizing, as well as storage, loadout or packaging of the finished product.

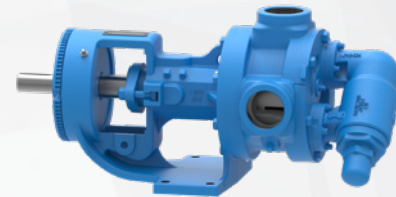


0508 4 BBENG

www.brownbros.co.nz

SUGGESTED PUMPS:

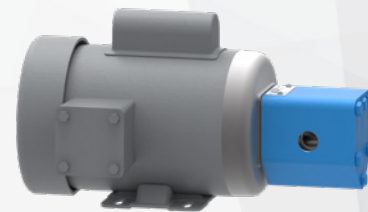
4124A SERIES™ / 4324A SERIES™



4124A Series™
Pump Shown

- Cast Iron
- High temperature & abrasive resistant material options
- High temperature mechanical seal options
- Capacities to 1,600 GPM

SG



- Cast Iron
- Compact installation
- Capacities to 190 GPM, Pressures to 500 PSI

4724 SERIES™ / 4327A SERIES™



4724 Series™
Pump Shown

- 316 Stainless Steel
- High viscosity & abrasive resistant sealing options
- Capacities to 1,600 GPM

VIKING PUMP®