



Designed to meet CSA Requirement 2.01 US for Natural Gas Operated Diaphragm Pumps



Quality System  
ISO9001 Certified

Environmental  
Management System  
ISO14001 Certified



## HIGH PRESSURE DUTY Ball Valve

# GH2-M <sup>Type 1</sup> (2:1 Ratio)

## Natural Gas-Powered Diaphragm Pump

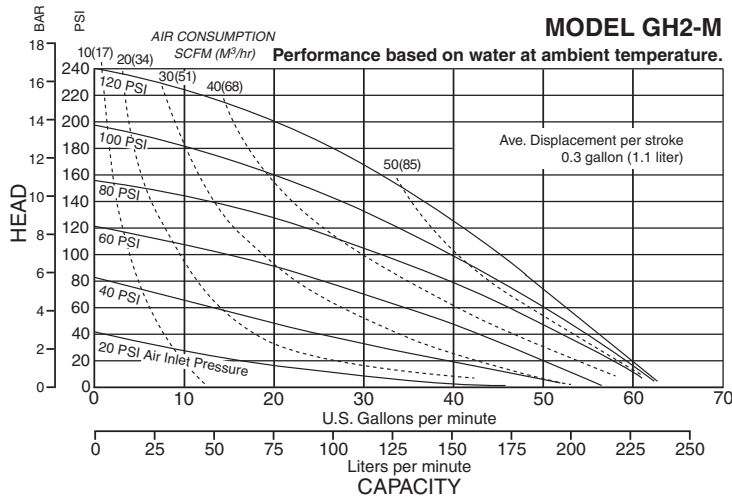
ENGINEERING, PERFORMANCE  
& CONSTRUCTION DATA

<b>INTAKE/DISCHARGE PIPE SIZE</b> 2" (50mm) NPT(F)	<b>CAPACITY</b> 0 to 62 gallons per minute (0 to 235 liters per minute)	<b>AIR VALVE</b> No-lube, no-stall design.	<b>SOLIDS-HANDLING</b> Up to 1/4" (6.3mm)	<b>HEADS UP TO</b> 250 psi or 577 ft. of water (17 bar or 176 meters)
---	---	---	--	---

(SANDPIPER® pumps are designed to be powered **only** by compressed natural gas)

### SANDPIPER® Model GH2-M

Performance based on water at ambient temperature.  
Average displacement per pump stroke: .30 gallon, 1.13 liter.



Natural gas-powered diaphragm pump delivers discharge pressure, up to 250 psi maximum, equal to twice the inlet gas pressure (2:1 ratio).

This pump is designed for filter press feed or similar applications where higher discharge pressures are required.

### MATERIALS OF CONSTRUCTION

GH2 Type 1	Suction/Discharge Flanges	Outer Chamber	Inner Chamber	Cylinder Body	Piston	Intermediate Housing	Diaphragm Rod	Valve Seat	O-ring Seal	Hardware	Inner Diaphragm Plate	Outer Diaphragm Plate	Diaphragm	Ball Valve	Cylinder Cap	Shipping Weight (lbs)
TB-1-I	CI	CI	CI	CPS	6063T6AL	356-T6AL	416SS	CS/B	PS	-	-	B	B	CI	CI	172
TC-1-I	CI	CI	CI	CPS	6063T6AL	356-T6AL	416SS	CS/T	PS	-	-	V	T	CI	CI	172
TV-1-I	CI	CI	CI	CPS	6063T6AL	356-T6AL	416SS	CS/T	PS	-	-	V	V	CI	CI	172
TGB-1-I	CI	CI	CI	CPS	6063T6AL	356-T6AL	416SS	CS/T	PS	PS	CI	B/T	T	CI	CI	172
TB-1-S	SS	SS	CI	CPS	6063T6AL	356-T6AL	416SS	SS/B	PS	-	-	B	B	CI	CI	176
TC-1-S	SS	SS	CI	CPS	6063T6AL	356-T6AL	416SS	SS/T	PS	-	-	V	T	CI	CI	176
TGB-1-S	SS	SS	CI	CPS	6063T6AL	356-T6AL	416SS	SS/T	PS	PS	SS	B/T	T	C	CI	176

#### Meanings of Abbreviations:

AL = Aluminum  
PS = Plated Steel  
\*SS = Alloy 316 Stainless Steel

B = Nitrile  
CI = Cast Iron

V = FKM(Fluorocarbon)  
T = PTFE

CS = Carbon Steel  
CPS = Chrome Plated Steel

B/T = Nitrile Backup/  
PTFE Overlay

SANDPIPER® is registered trademarks of Warren Rupp, Inc.

\*CF-8M Alloy equal to or exceeding ASTM specification A743 for corrosion resistant iron chromium, iron, chromium nickel, and nickel based alloy castings for general applications. Commonly referred to as 316 Stainless Steel in the pump industry.

# GH2 HIGH PRESSURE DUTY BALL VALVE



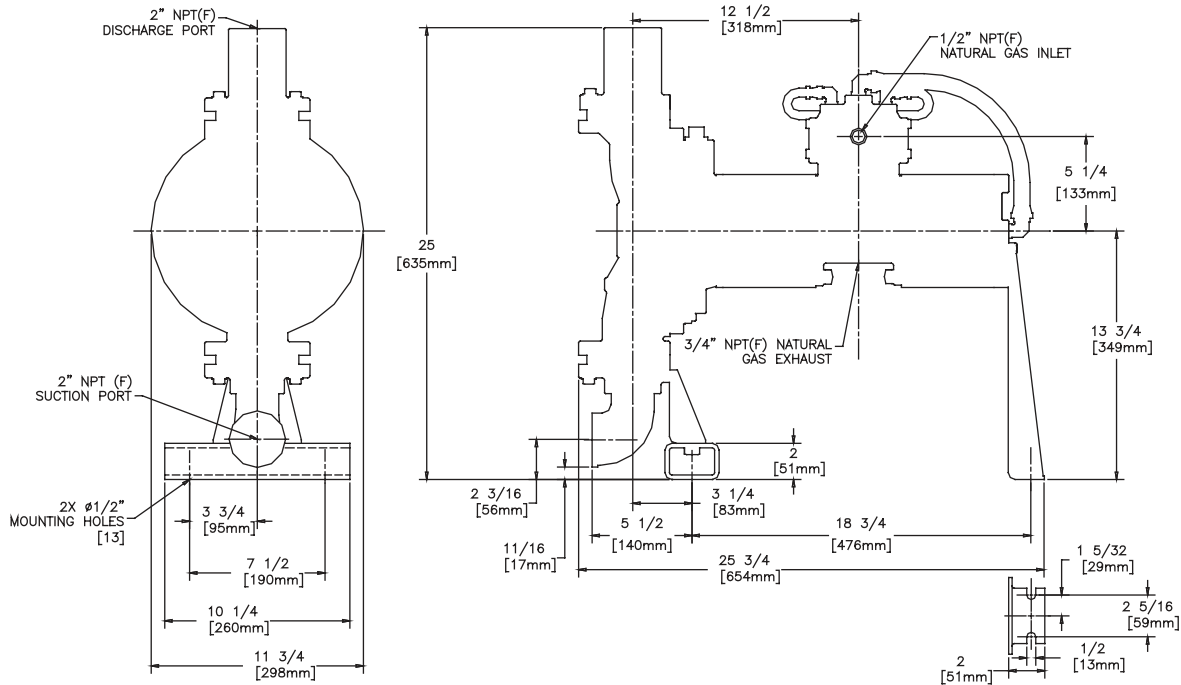
**Available  
Parts Kits:**

**Air End Kit:**  
No. 476-100-000

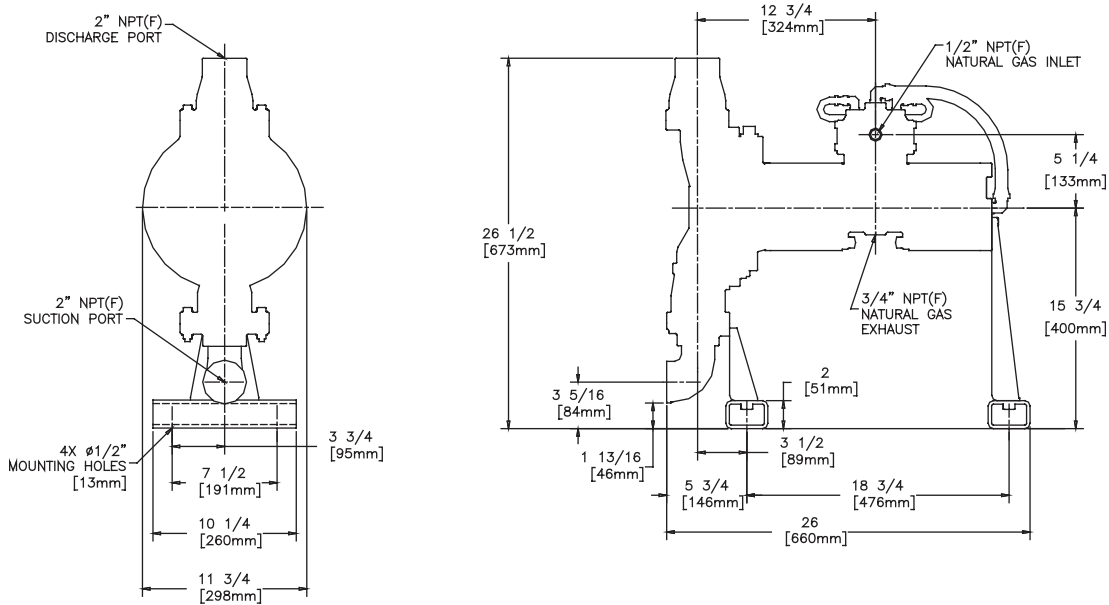
**CI Wetted End Kits:**  
Nos. 476-048-360 476-048-363  
476-048-633 476-048-xxx

**WR-S Wetted End Kits:**  
Nos. 476-056-360 476-056-xxx  
476-056-633

Dimensions are  $\pm 1/8"$   
Figures in parenthesis = millimeters



**Stainless Steel Models Only**



**GH2 2" NPT(F) SUCTION • 1/2" NPT(F) DISCHARGE • 1/2" NPT(F) GAS INLET PORT • 3/4" NPT(M) GAS EXHAUST PORT**