

CONTROLLED, SUSTAINABLE, COST EFFECTIVE.



HSE ANIMAL EFFLUENT RANGE OF PUMPS

The very heart of your effluent irrigation system.

monopumps.com.au



THE VERY HEART OF YOUR EFFLUENT IRRIGATION SYSTEM.

Features

With a long history of manufacturing Progressing Cavity (PC) pumps, we're constantly working to solve your operational challenges.

A Mono™ HSE dairy effluent pump can offer considerable cost savings by eliminating the need for a series of pumps when pumping over a long distance or high head. In some situations it can also mean not having to go to the expense of upgrading the existing power supply, with the potential to save you thousands.

Based on comparisons with centrifugal effluent pumps that deliver a similar performance, choosing a Mono HSE dairy effluent pump provides you with a cost-effective option.

| | |
|-----------------------------------|---|
| Capacity | Up to 50m ³ /h |
| Pressure | Up to 120m |
| Models | Higher flow and pressure models available upon request |
| Construction Materials | Available in cast iron body, hard chrome-plated rotor and nitrile rubber stator |
| Sealed Joints | Fully sealed drive train to maximise life and minimise downtime |
| Shaft Sealing – Horizontal | Silicon carbide mechanical seal |
| Standard Base Plate | Stainless steel |

Benefits

HIGH EFFICIENCY PUMP

Requires up to 75% less power than an equivalent centrifugal pump.

LOW POWER USAGE

May eliminate the need to upgrade power supply to ensure effluent irrigation compliance.

LOW RUNNING SPEEDS

Reduced wear for a longer working pump life, which extends the period between routine maintenance.

SURFACE MOUNTED

Making it easier, cleaner and less hazardous for any maintenance.

CONSTANT FLOW

Ideal for pumping effluent over long distances while providing a constant flow for even application.

EFFLUENT APPLICATION COMPLIANT

When connected up to modern irrigators or pod systems, the system can deliver ideal application rates over a wide range of terrain.

NATIONAL COVERAGE

Mono's extensive dealer network is on hand to assist with your installation and servicing needs.

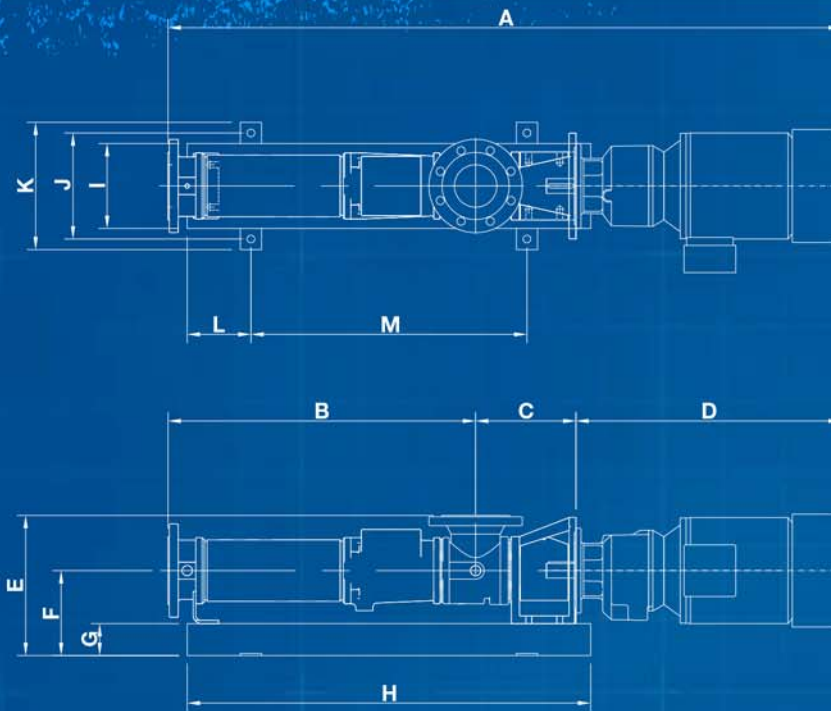
TRUSTED AND RELIABLE

The effluent pump is part of the Mono reliable and robust PC pumping range from the world's largest progressing cavity pump manufacturer.



So nothing goes to waste.
monopumps.com.au

Product Dimensions

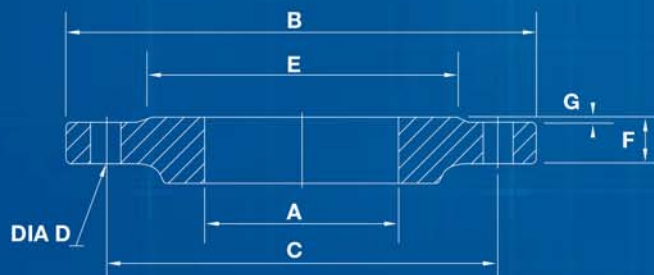


Pump Model

| Pump Model | A | B | C | D | E | F | G | H | I | J | K | L | M |
|------------|------|------|-----|-----|-----|-----|----|------|-----|-----|-----|-----|------|
| HSE 12/60 | 1510 | 724 | 236 | 550 | 306 | 175 | 50 | 1375 | 200 | 250 | 300 | 150 | 1075 |
| HSE 15/60 | 1767 | 830 | 281 | 656 | 360 | 200 | 50 | 1375 | 200 | 250 | 300 | 150 | 1075 |
| HSE 16/100 | 2011 | 1036 | 319 | 656 | 330 | 200 | 50 | 1375 | 200 | 250 | 300 | 150 | 1075 |
| HSE 18/90 | 2011 | 1036 | 319 | 656 | 330 | 200 | 50 | 1375 | 200 | 250 | 300 | 150 | 1075 |
| HSE 22/100 | 2271 | 1198 | 281 | 792 | 360 | 200 | 50 | 1800 | 250 | 300 | 350 | 150 | 1200 |
| HSE 25/100 | 2271 | 1198 | 281 | 792 | 360 | 200 | 50 | 1800 | 250 | 300 | 350 | 150 | 1200 |
| HSE 33/80 | 2535 | 1374 | 369 | 792 | 370 | 210 | 50 | 1800 | 250 | 300 | 350 | 150 | 1500 |
| HSE 30/110 | 2535 | 1374 | 369 | 792 | 370 | 210 | 50 | 1800 | 250 | 300 | 350 | 150 | 1500 |
| HSE 42/100 | 2648 | 1541 | 315 | 792 | 395 | 210 | 50 | 1800 | 250 | 300 | 350 | 150 | 1500 |

* all measurements are in millimeters unless otherwise stated

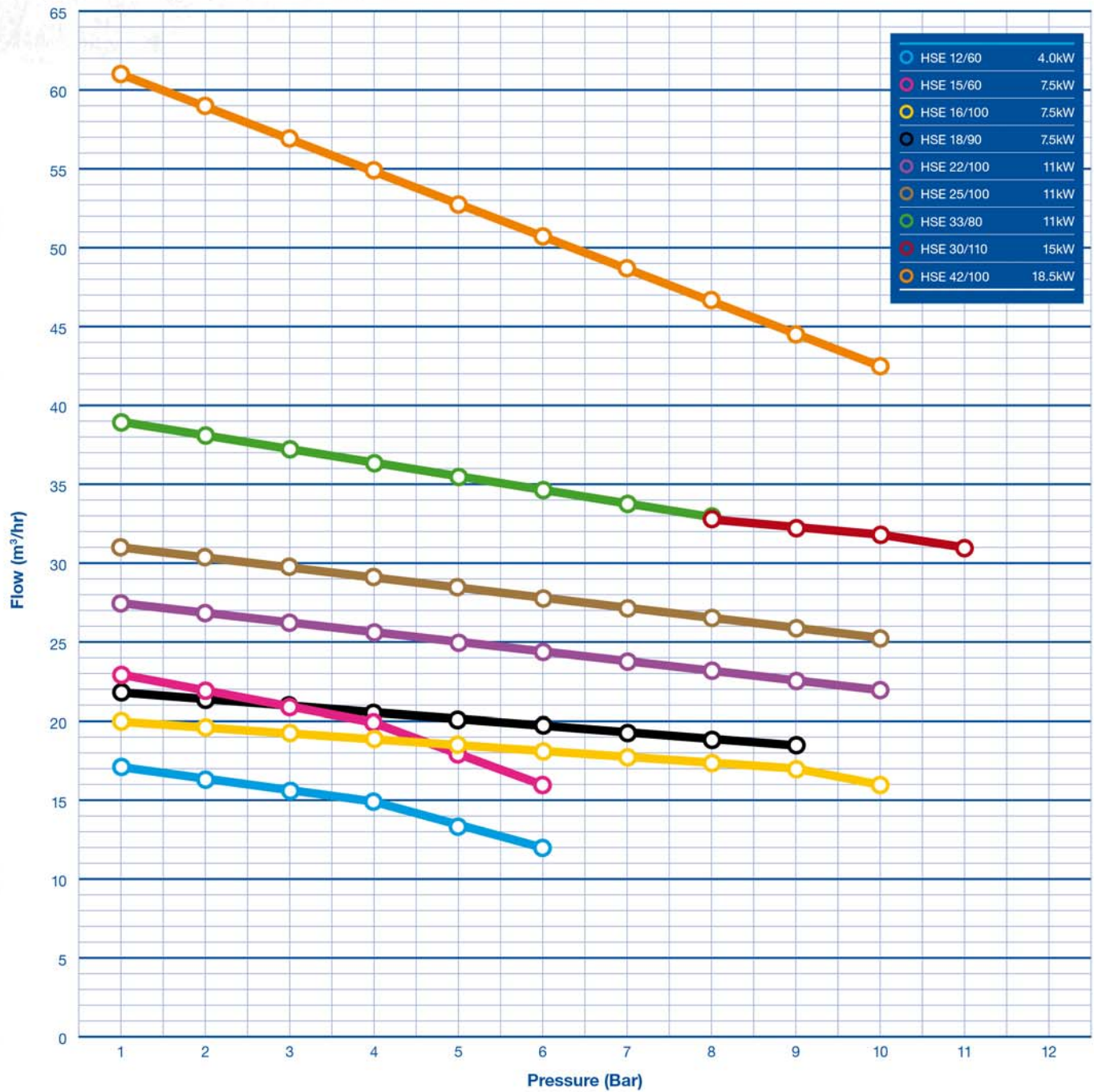
Flange Data



| Pump Construction | Pump Models | Flange Specification | Dimensions (Number) | | | | | | |
|-------------------|---|--|---------------------|-----|-----|--------|-----|----|---|
| | | | A | B | C | D | E | F | G |
| Cast Iron | HSE 12/60, 16/100, 18/90 | BS EN 1092 Section 3.2 PN16 DIN 2533-16 | 100 | 220 | 180 | 19 (8) | 156 | 24 | 3 |
| | HSE15/60, 22/100, 25/100, HSE 33/80, 30/110 | | 125 | 250 | 210 | 19 (8) | 184 | 26 | 3 |
| | HSE 42/100 | | 150 | 285 | 240 | 23 (8) | 211 | 26 | 3 |

* all measurements are in millimeters unless otherwise stated

Performance Data



Whilst all reasonable care has been taken to ensure the accuracy of the provided information, pump performance can and will vary depending on actual operating conditions (product consistency, temperature, and pressure losses). The information provided should be used as a guide only and in light of Mono's aim towards ongoing product development, specifications and performances are subject to change without notice.