

Chopper Hopper

Solids Reduction for
Biogas Generation

Ensuring waste is never wasted.

The Chopper Hopper™ is a powerful and aggressive grinder pump that combines solids reduction and transfer pumping into one efficient unit. It homogenizes objects like whole fruits and vegetables into a pumpable puree or mash. Up to three stages of solids reduction are available for coarse, medium, and fine particle size.

Typical Applications

- Food Processing
- Waste handling for disposal
- Rework or recovery of product
- Rendering plants
- Slaughter plants - process internal organs
- Orange peels, juicers
- Waste potatoes
- Meat Products

Features and Benefits

Ease of Processing

A grinding and pumping operation in a single, compact operation with fast process times due to a large surge capacity hopper and high flow rates.

3 Stage Solids Reduction

Available for coarse, medium, and fine particle size. Drastic size reduction occurs in the first stage where fierce cutting blades grab, tear, and shred solids, as big as whole watermelons, down to a particle size of less than 1" in a single pass. Second and third stage grinding provides the desired solid size and texture needed.

Multiple Cutter Designs

Angled cutters for grabbing or tearing large size objects with additional cutters located in the extension tube for further solids reduction. The design allows for optional fine grind conditioning through homogenizing units.

Materials of Construction

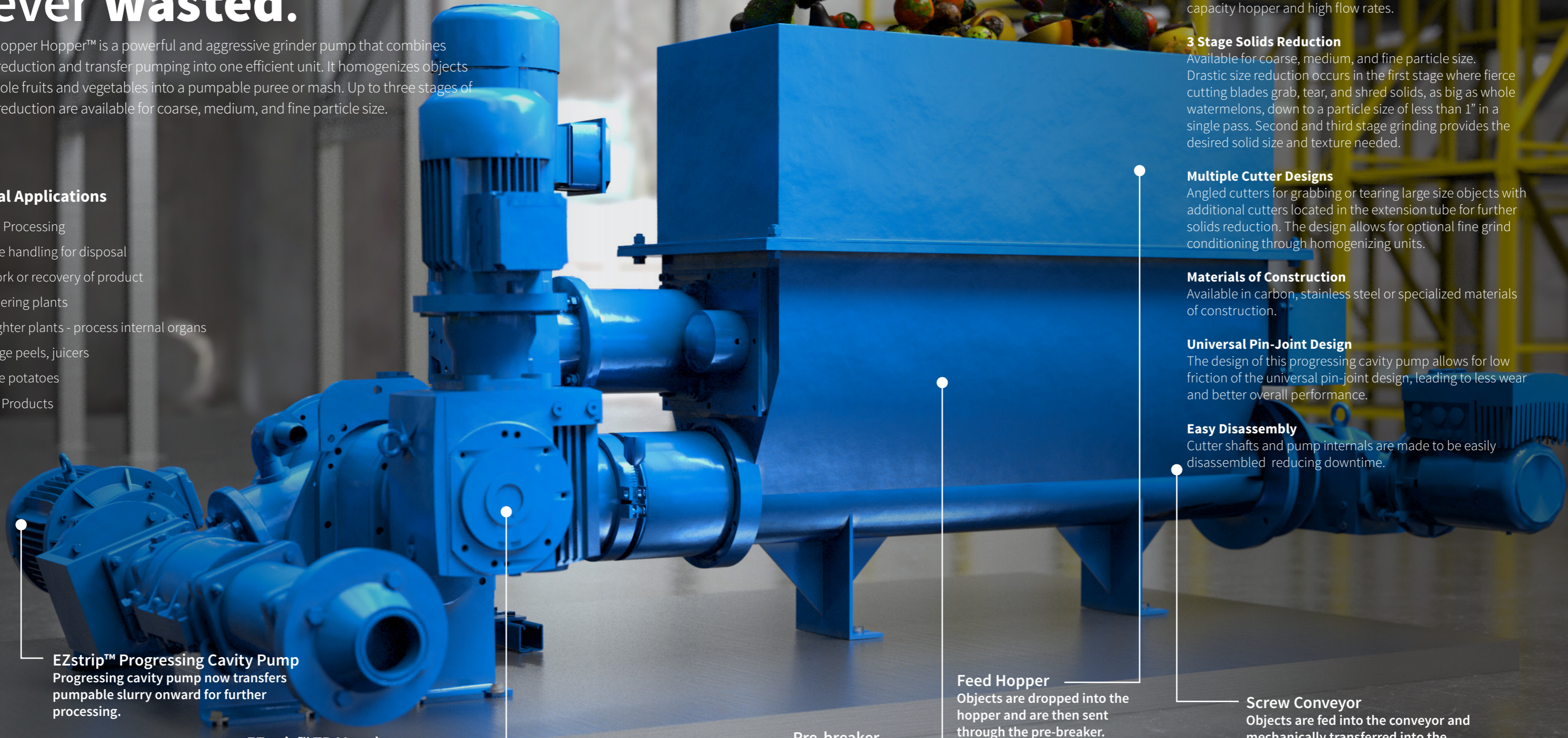
Available in carbon, stainless steel or specialized materials of construction.

Universal Pin-Joint Design

The design of this progressing cavity pump allows for low friction of the universal pin-joint design, leading to less wear and better overall performance.

Easy Disassembly

Cutter shafts and pump internals are made to be easily disassembled reducing downtime.



EZstrip™ Progressing Cavity Pump
Progressing cavity pump now transfers pumpable slurry onward for further processing.

EZstrip™ TR Muncher
Grinder material is macerated into a homogeneous slurry.

Feed Hopper
Objects are dropped into the hopper and are then sent through the pre-breaker.

Pre-breaker
Pre-cutters break up the solids, including organic waste such as large produce and hard materials like stones and seeds.

Screw Conveyor
Objects are fed into the conveyor and mechanically transferred into the grinder.

National Oilwell Varco has produced this brochure for general information only and it is not intended for design purposes. Although every effort has been made to maintain the accuracy and reliability of its contents, National Oilwell Varco in no way assumes responsibility for liability for any loss, damage or injury resulting from the use of information and data herein. All applications for the material described are at the user's risk and are the user's responsibility.

Corporate Headquarters

7909 Parkwood Circle Drive
Houston, Texas 77036
USA

Process and Flow Technologies

Greengate, Middleton
Manchester M24 1SA
UK

© 2018 National Oilwell Varco All Rights Reserved
12773_ENG_V01



industrial@nov.com

nov.com/industrial